

Injury attendances to Fairfield General Hospital Accident and Emergency Department

April 2008 to March 2009

This report summarises recorded injury attendances to Fairfield General Hospital Accident and Emergency Department (AED) between April 2008 and March 2009.

Between April 2008 and March 2009 there were 61,105 injury attendances to Fairfield General Hospital AED. Males accounted for just over half of all attendances (n=31,396; 51%). The month with the highest attendances was May (n=5,397) with February having the lowest attendances for injury (n=4,726) (**Figure 1**). The majority of attendances were recorded as other injury (90%). Of the specified injury groups fall accounted for the highest proportion (6%) followed by road traffic collision (RTC) (2%) and assault (2%) (**Table 1**).

For all attendances the highest proportion of attendances were for persons aged 20-34 (22%) and 65 plus (20%) (**Figure 2**). Over half of fall attendees (54%) were aged 65 or over. Over two-fifths (44%) of assault attendees were aged 20-34. Over two fifths (42%) of RTC attendees were aged 20-34. Over half of deliberate self-harm (DSH) attendees were aged between 20 and 34 (**Figure 3**).

Table 2 shows the location of the incident of injury attendances. Nearly two thirds (64%) of injuries occurred in the home. One in ten (11%) injuries occurred in a public place with smaller proportions occurring at work (5%) or at school (3%). Over three-

quarters (77%) of DSH injuries occurred at home. Nearly half (48%) of assaults occurred in a public place.

Table 3 shows the ethnicity of attendees to Fairfield General Hospital AED. Over three-quarters (n=52,355; 86%) were white and 5% were Pakistani.

The disposal of a patient can give an indication of the severity of the injuries sustained. Most attendees were discharged (50%), over a quarter (26%) were admitted and 19% had a referral/follow-up (**Table 4**). Over three-quarters (77%) of RTC attendees were discharged while 6% were admitted. Three in ten (29%) fall attendees were admitted and nearly half (48%) of burn/scald attendees had a referral/follow-up (**Table 5**).

Table 6 shows the arrival methods of attendances at Fairfield General Hospital AED. Over half arrived by car (58%) while nearly a third (30%) arrived by ambulance.

Figure 4 (a-d) shows crude rates of attendance at Fairfield General Hospital AED by attendee's area of residence, in this case Middle Super Output Area (MSOA). The MSOAs with the highest crude rates are indicated beneath each figure.¹

¹ Population figures are drawn from mid-2008 population estimates from the Office for National Statistics.

Figure 1: Fairfield General Hospital AED: Total injury attendances by gender and month, April 2008 to March 2009

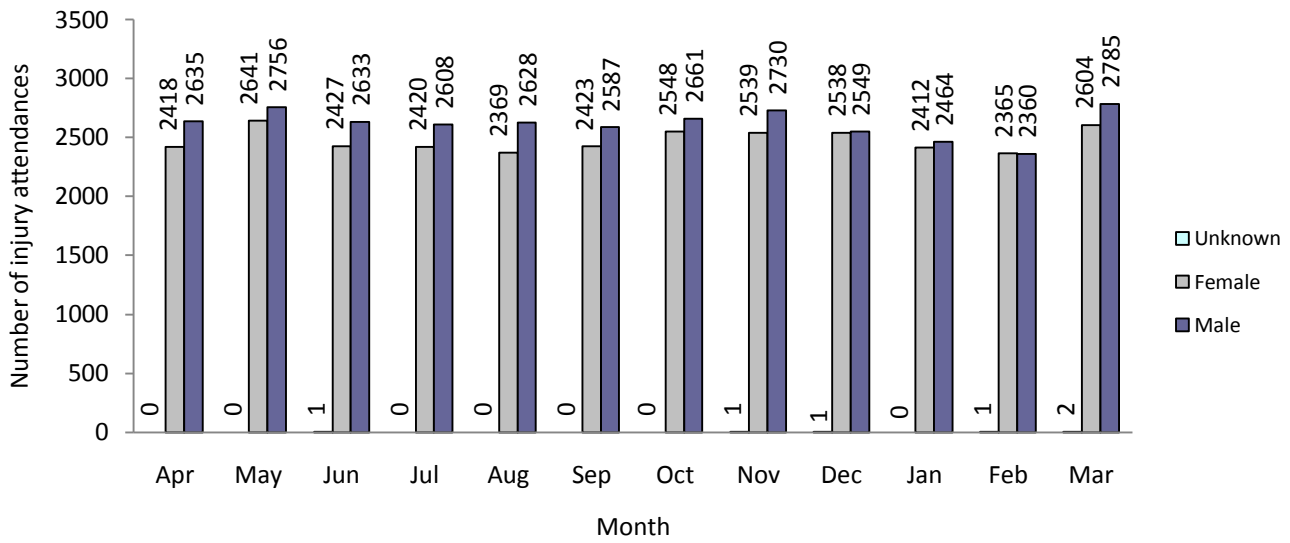


Table 1: Fairfield General Hospital AED: Total injury attendances by injury group and month, April 2008 to March 2009

Injury	Apr	May	Jun	Jul	Aug	Sep	Oct	Nov	Dec	Jan	Feb	Mar	Total	%*
Other	4645	4864	4597	4536	4459	4520	4735	4738	4526	4353	4185	4926	55084	90
Fall	221	296	261	288	265	261	278	280	335	307	327	291	3410	6
Assault	67	121	85	82	105	83	69	112	75	87	77	63	1026	2
RTC	67	52	67	60	104	87	87	84	104	77	86	65	940	2
Burn/scald	36	45	30	51	47	50	31	43	40	35	35	32	475	1
Deliberate self-harm	17	19	21	11	17	9	9	12	8	17	16	14	170	0
Total	5053	5397	5061	5028	4997	5010	5209	5269	5088	4876	4726	5391	61105	100

*Percentage may not total one hundred due to rounding.

Figure 2: Fairfield General Hospital AED: Total injury attendances by age group and month, April 2008 to March 2009

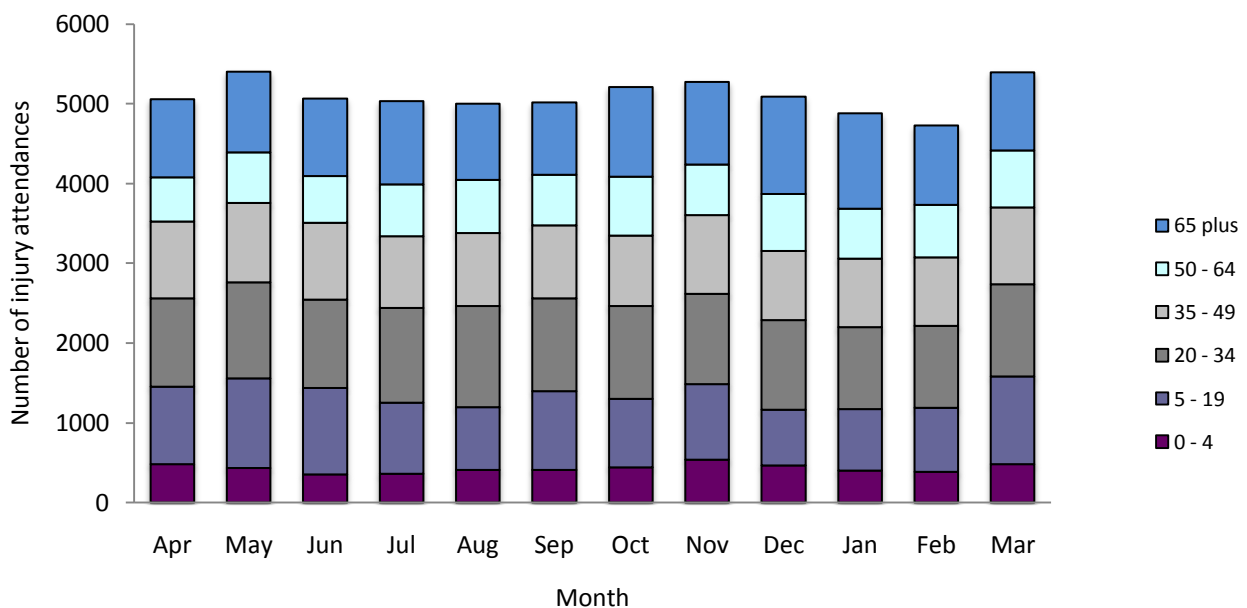


Figure 3: Fairfield General Hospital AED: Total injury attendances by age group and injury group, April 2008 to March 2009

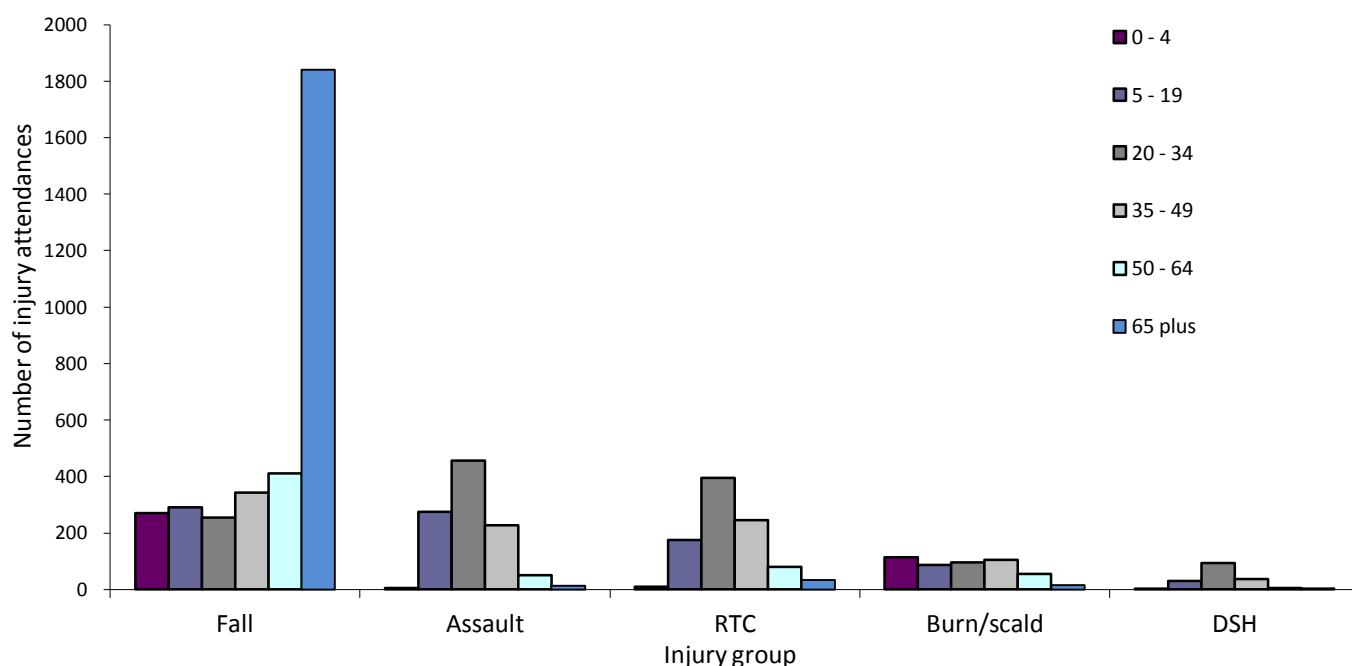


Table 2: Fairfield General Hospital AED: Total injury attendances by location of incident and injury group, April 2008 to March 2009

Location	Burn/scald	%	DSH	%	Fall	%	RTC	%	Assault	%	Other	%	Total	%
Home	233	49	131	77	2030	60	9	1	278	27	36638	67	39319	64
Other	160	34	27	16	602	18	720	77	210	20	8879	16	10598	17
Public place	22	5	11	6	652	19	201	21	493	48	5153	9	6532	11
Work	58	12	0	0	67	2	9	1	38	4	2839	5	3011	5
School	2	0	1	1	59	2	1	0	7	1	1575	3	1645	3
Total	475	100	170	100	3410	100	940	100	1026	100	55084	100	61105	100

Table 2: Fairfield General Hospital AED: Total injury attendances by ethnicity and month, April 2008 to March 2009²

Ethnicity	Apr	May	Jun	Jul	Aug	Sep	Oct	Nov	Dec	Jan	Feb	Mar	Total	%
White	4357	4632	4358	4331	4291	4352	4450	4493	4279	4186	4041	4585	52355	86
Pakistani	278	313	258	278	281	268	260	250	290	252	240	298	3266	5
Not known	195	197	195	193	220	168	238	262	265	207	216	250	2606	4
Other	115	150	162	127	112	120	131	147	147	138	130	170	1649	3
Black	45	33	41	39	36	42	54	46	40	43	43	41	503	1
Mixed	19	34	7	27	23	21	34	28	26	16	23	24	282	0
Indian	21	18	16	13	15	8	11	18	17	18	16	11	182	0
Bangladeshi	15	14	16	12	***	20	21	19	10	11	12	***	174	0
Chinese	8	6	8	8	***	11	10	6	14	5	5	***	88	0
Total	5053	5397	5061	5028	4997	5010	5209	5269	5088	4876	4726	5391	61105	100

² White = Irish, British, other white background; Mixed = white and black, white and Asian, mixed any other; Other = any other ethnic group, any other Asian background; Black = African, Caribbean, other black.

Table 3: Fairfield General Hospital AED: Total injury attendances by method of disposal and month, April 2008 to March 2009³

Method	Apr	May	Jun	Jul	Aug	Sep	Oct	Nov	Dec	Jan	Feb	Mar	Total	%
Discharged	2730	2972	2944	2933	2609	2460	2448	2486	2218	2146	2095	2459	30500	50
Admitted	1320	1193	1123	1154	1208	1225	1517	1489	1608	1453	1345	1349	15984	26
Referral/follow-up	799	947	738	752	968	1139	1012	1033	981	1027	1068	1306	11770	19
Other	204	285	256	189	212	186	232	261	281	250	218	277	2851	5
Total	5053	5397	5061	5028	4997	5010	5209	5269	5088	4876	4726	5391	61105	100

Table 5: Fairfield General Hospital AED: Total injury attendances by method of disposal and injury group, April 2008 to March 2009

Method	Other	%	DSH	%	Fall	%	RTC	%	Burn/scald	%	Assault	%	Total	%
Discharged	27211	49	87	51	1723	51	721	77	216	45	542	53	30500	50
Admitted	14776	27	35	21	981	29	54	6	17	4	121	12	15984	26
Referral/follow-up	10521	19	13	8	623	18	162	17	228	48	223	22	11770	19
Other	2576	5	35	21	83	2	3	0	14	3	140	14	2851	5
Total	55084	100	170	100	3410	100	940	100	475	100	1026	100	61105	100

Table 6: Fairfield General Hospital AED: Total injury attendances by mode of arrival and month, April 2008 to March 2009

Mode	Apr	May	Jun	Jul	Aug	Sep	Oct	Nov	Dec	Jan	Feb	Mar	Total	%
Car	3064	3239	3071	2985	2997	3066	2993	2974	2802	2645	2644	3255	35735	58
Ambulance	1451	1531	1432	1493	1492	1447	1675	1678	1721	1669	1450	1509	18548	30
Other	221	265	202	202	166	175	243	238	226	207	255	282	2682	4
Taxi	150	164	141	158	156	143	141	164	167	170	171	141	1866	3
Bus	91	102	123	109	104	98	69	96	73	70	97	105	1137	2
Foot	55	70	71	63	63	52	66	84	63	84	72	74	817	1
Police	14	16	20	10	14	16	7	19	18	17	16	13	180	0
Work	7	10	1	8	5	13	15	16	18	14	21	12	140	0
Total	5053	5397	5061	5028	4997	5010	5209	5269	5088	4876	4726	5391	61105	100

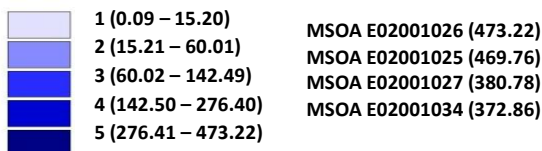
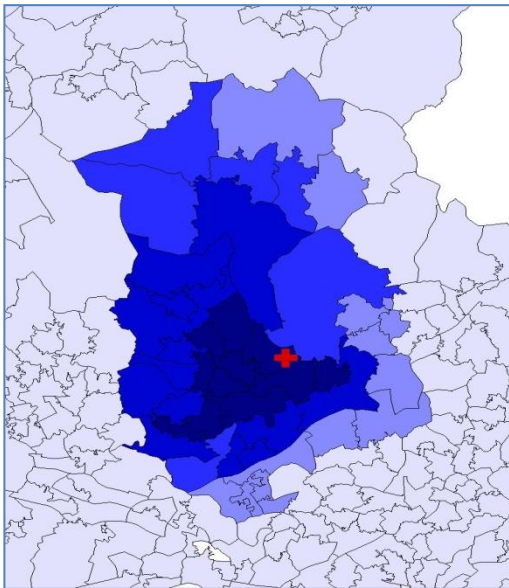
For further information contact: Centre for Public Health, Research Directorate, Liverpool John Moores University, 5th Floor, Kingsway House, Hatton Garden, Liverpool, L3 2AJ, Tel: 0151 231 8724 or Email: i.j.warren@ljmu.ac.uk
Website: www.tiig.info (data requests should be made through the website)

³ Admitted=admitted to AED bed/became a lodged patient of the same health care provider; Discharged=discharged - did not require any follow up treatment; Referral/follow-up =discharged - follow up treatment to be provided by GP, referred to AED clinic, referred to fracture clinic, referred to other out-patient clinic, transferred to other health care provider, referred to other health care professional; Other=died in department, left department before being treated, left department having refused treatment, other.

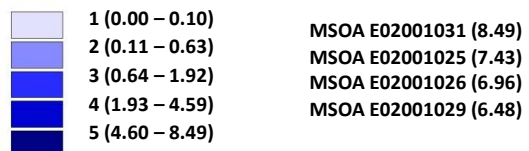
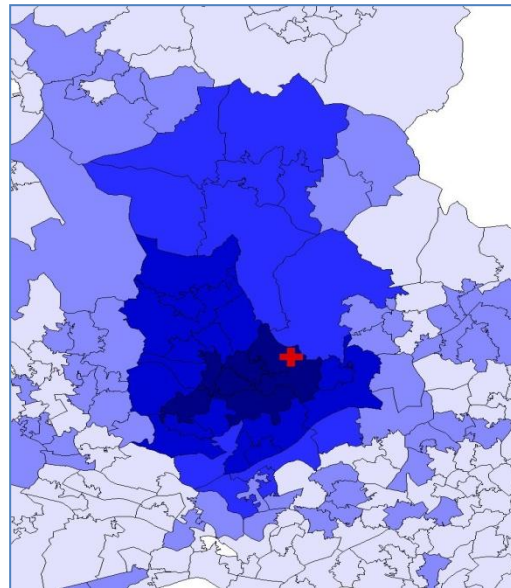
Figure 4a,b,c,d: Middle Super Output Area of residence for injury attendances to Fairfield General Hospital AED. Quintiles of crude rates per 1,000 population, April 2008 to March 2009

a) All injury attendances: quintiles of crude rates per 1,000 population b) RTC: quintiles of crude rates per 1,000 population

+ Fairfield General Hospital AED

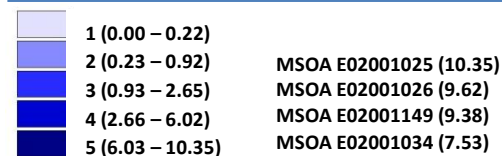
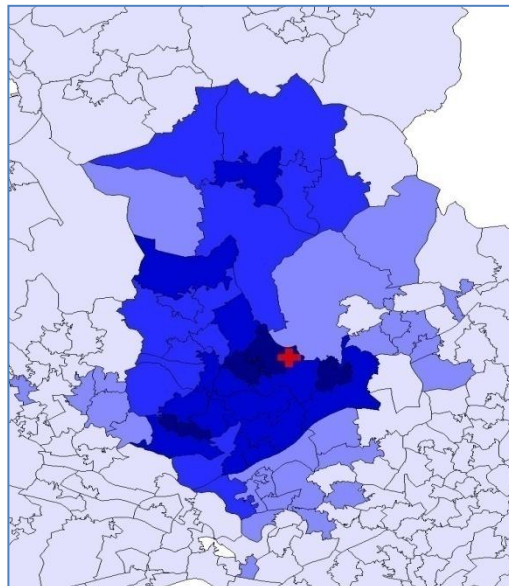


+ Fairfield General Hospital AED



c) Assault: quintiles of crude rates per 1,000

+ Fairfield General Hospital AED



d) Fall: quintiles of crude rates per 1,000 population

+ Fairfield General Hospital AED

