



Department
of Health &
Social Care

East of England lower tier local authority watchlist, epidemiological charts

Produced 30 May 2021

Notes

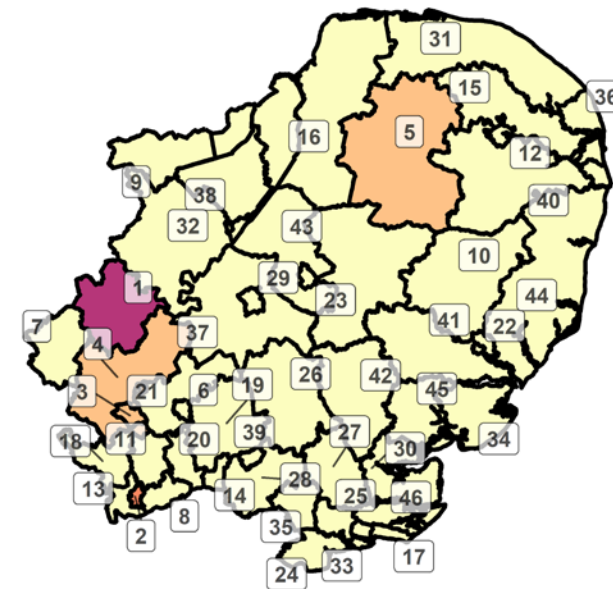
- This data is provided by Public Health England for the purpose of monitoring and supporting the management of COVID-19 infections in local authorities.
- The reports are produced using 2019 Office for National Statistics population data.
- If you would like to know the weekly trend for the case rate charts and persons tested chart please see lower tier local authority watchlist.

Weekly case rate per 100,000 population by local authority from 19 May to 25 May 2021

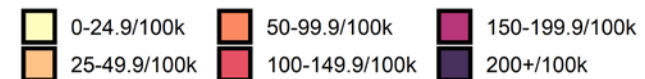
Rank	Local Authority	Case Rate (per 100,000)	Number of cases (1 week)
1	Bedford	190.4	330
2	Watford	64.2	62
3	Luton	46.5	99
4	Central Bedfordshire	43.3	125
5	Breckland	26.4	37
6	Stevenage	23.9	21
7	Milton Keynes	23.8	64
8	Hertsmere	22.9	24
9	Peterborough	22.2	45
10	Mid Suffolk	19.3	20
11	St Albans	18.9	28
12	Norwich	18.5	26
13	Three Rivers	18.2	17
14	Broxbourne	17.5	17
15	Broadland	16.1	21
16	King's Lynn and West Norfolk	13.9	21
17	Southend-on-Sea	13.1	24
18	Dacorum	12.9	20
19	East Hertfordshire	12.7	19
20	Welwyn Hatfield	11.4	14
21	North Hertfordshire	11.2	15
22	Ipswich	10.2	14
23	West Suffolk	9.5	17

Rank	Local Authority	Case Rate (per 100,000)	Number of cases (1 week)
24	Thurrock	9.2	16
25	Basildon	9.1	17
26	Uttlesford	8.8	8
27	Chelmsford	8.4	15
28	Epping Forest	7.6	10
29	Cambridge	7.2	9
30	Maldon	6.2	4
31	North Norfolk	5.7	6
32	Huntingdonshire	5.6	10
33	Castle Point	5.5	5
34	Tendring	5.5	8
35	Brentwood	5.2	4
36	Great Yarmouth	5.0	5
37	South Cambridgeshire	5.0	8
38	Fenland	4.9	5
39	Harlow	4.6	4
40	South Norfolk	4.3	6
41	Babergh	3.3	3
42	Braintree	3.3	5
43	East Cambridgeshire	3.3	3
44	East Suffolk	2.8	7
45	Colchester	2.6	5
46	Rochford	2.3	2

East of England
COVID-19 cases: 19 May to 25 May 2021
 Weekly case rates per 100,000 population by local authority



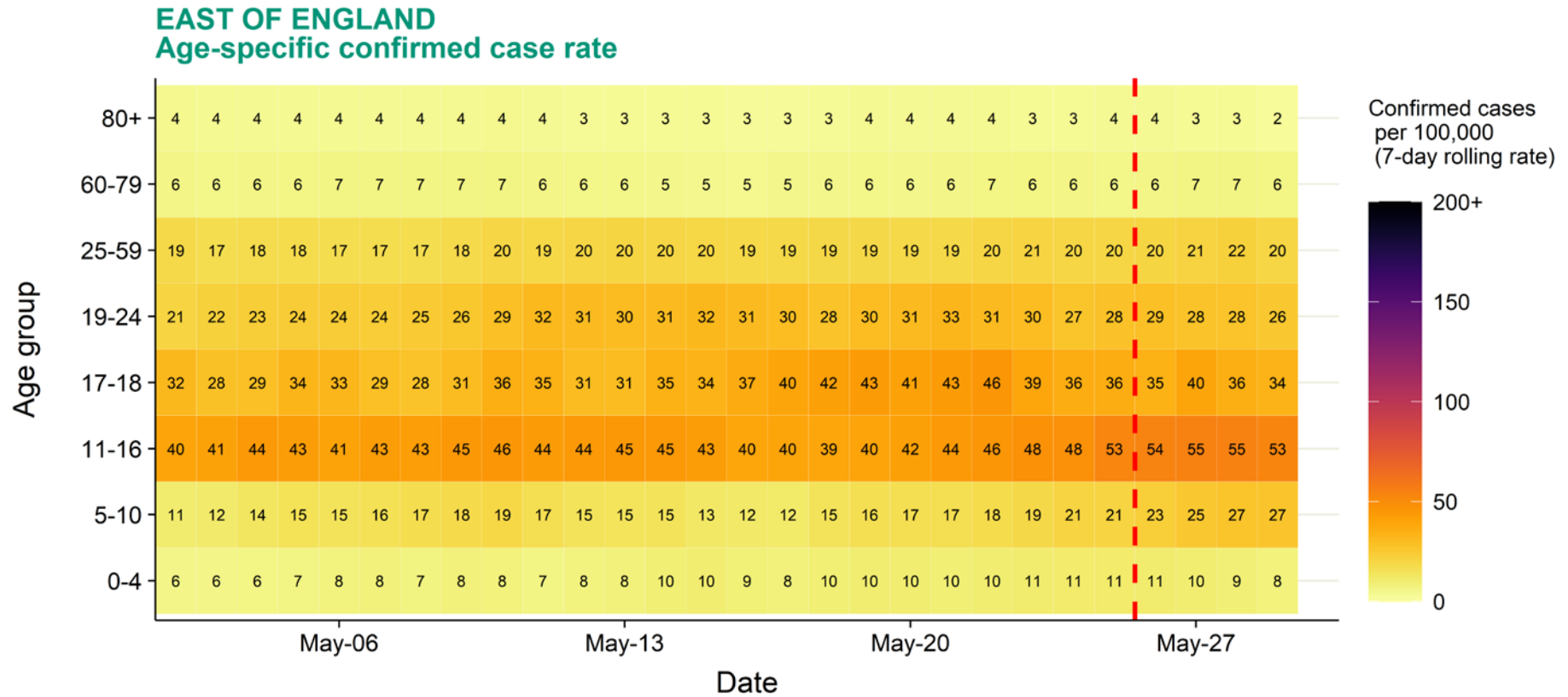
Covid-19 rate by local authority



Data from SGSS; Pillar 1 and 2 testing. Figure by Outbreak Surveillance Team, Public Health England.

Contains National Statistics data including 2019 population estimates Â© Crown copyright and database right 2020

East of England age-stratified heatmap of weekly case rate, 2 May to 25 May 2021



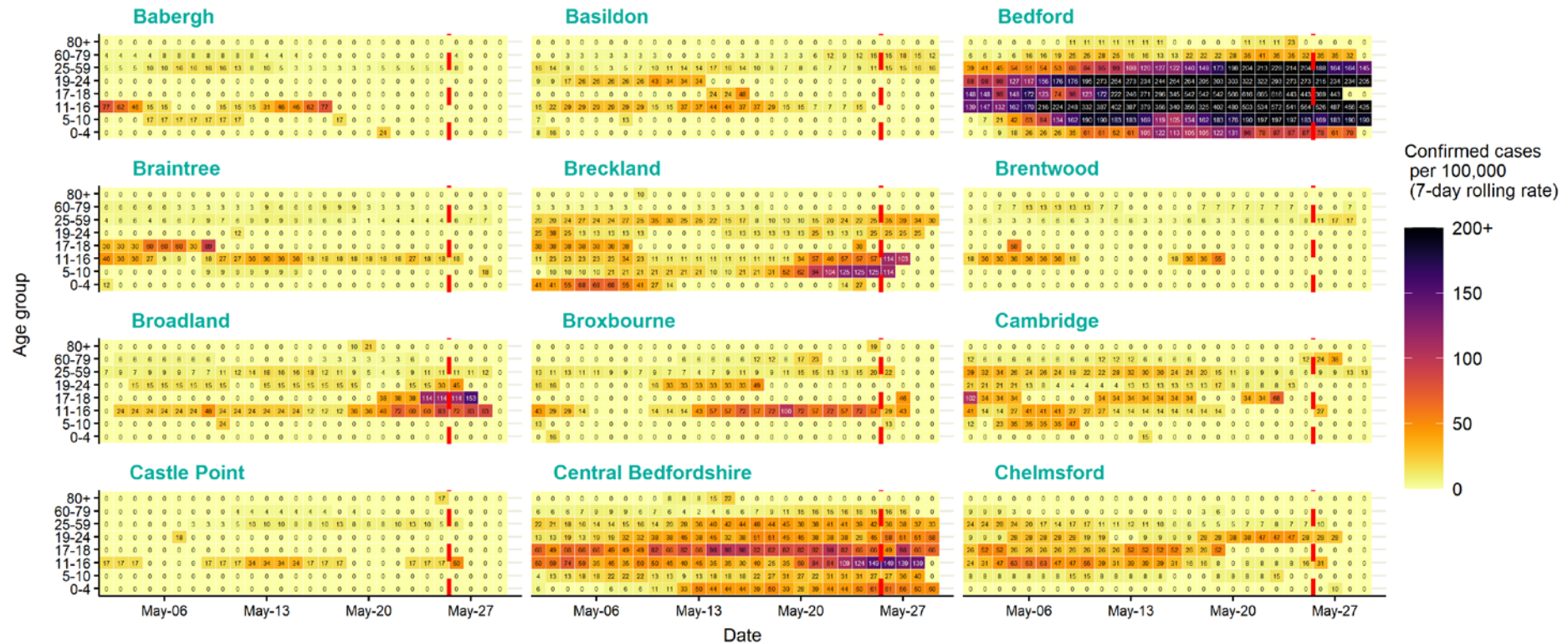
Source: Case data from SGSS. Produced by Outbreak Surveillance Team, PHE

The red dashed line on the heatmaps show the last four days where data may be incomplete due to reporting delays and removal of LFDs with accompanying negative PCR results.

Please consider this data provisional.

East of England age-stratified heatmap of weekly case rate by local authority, 2 May to 25 May 2021

EAST OF ENGLAND LOCAL AUTHORITIES Age-specific confirmed case rate



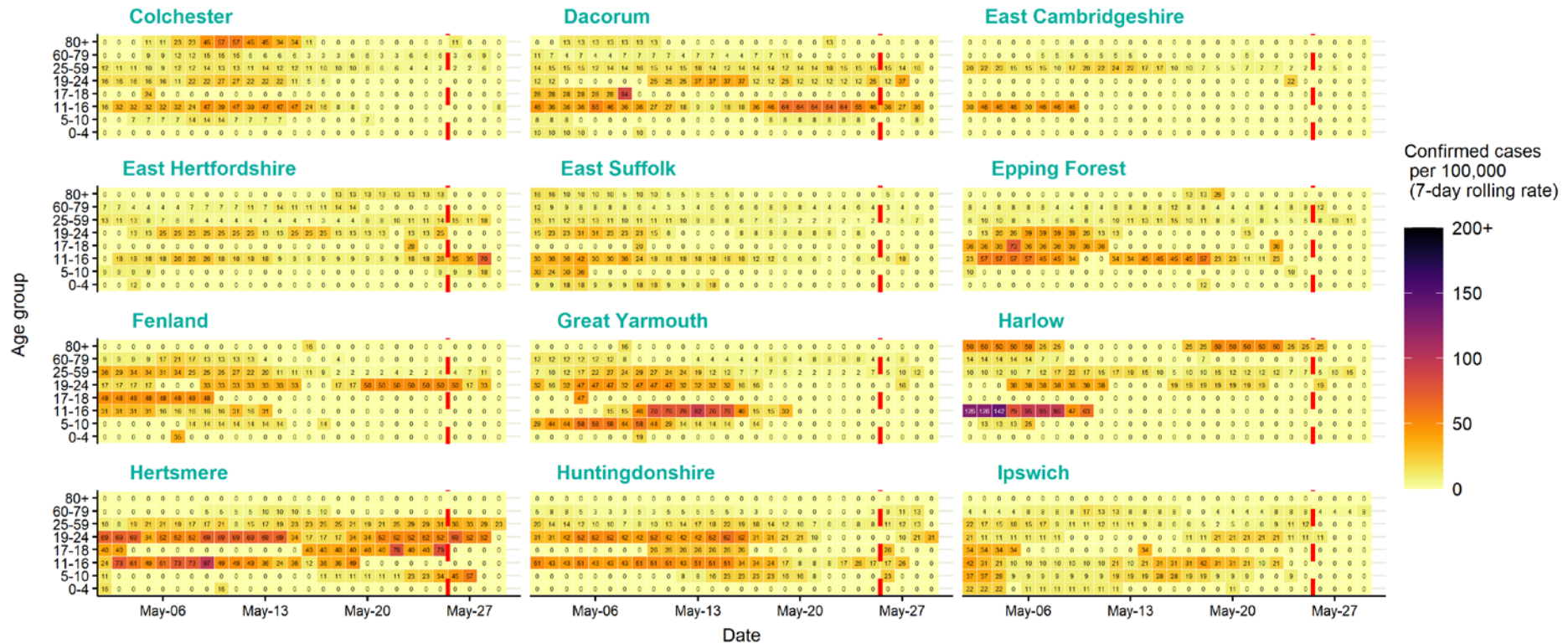
Source: Case data from SGSS. Produced by Outbreak Surveillance Team, PHE

The red dashed line on the heatmaps show the last four days where data may be incomplete due to reporting delays and removal of LFDs with accompanying negative PCR results.

Please consider this data provisional.

East of England age-stratified heatmap of weekly case rate by local authority, 2 May to 25 May 2021

EAST OF ENGLAND LOCAL AUTHORITIES Age-specific confirmed case rate



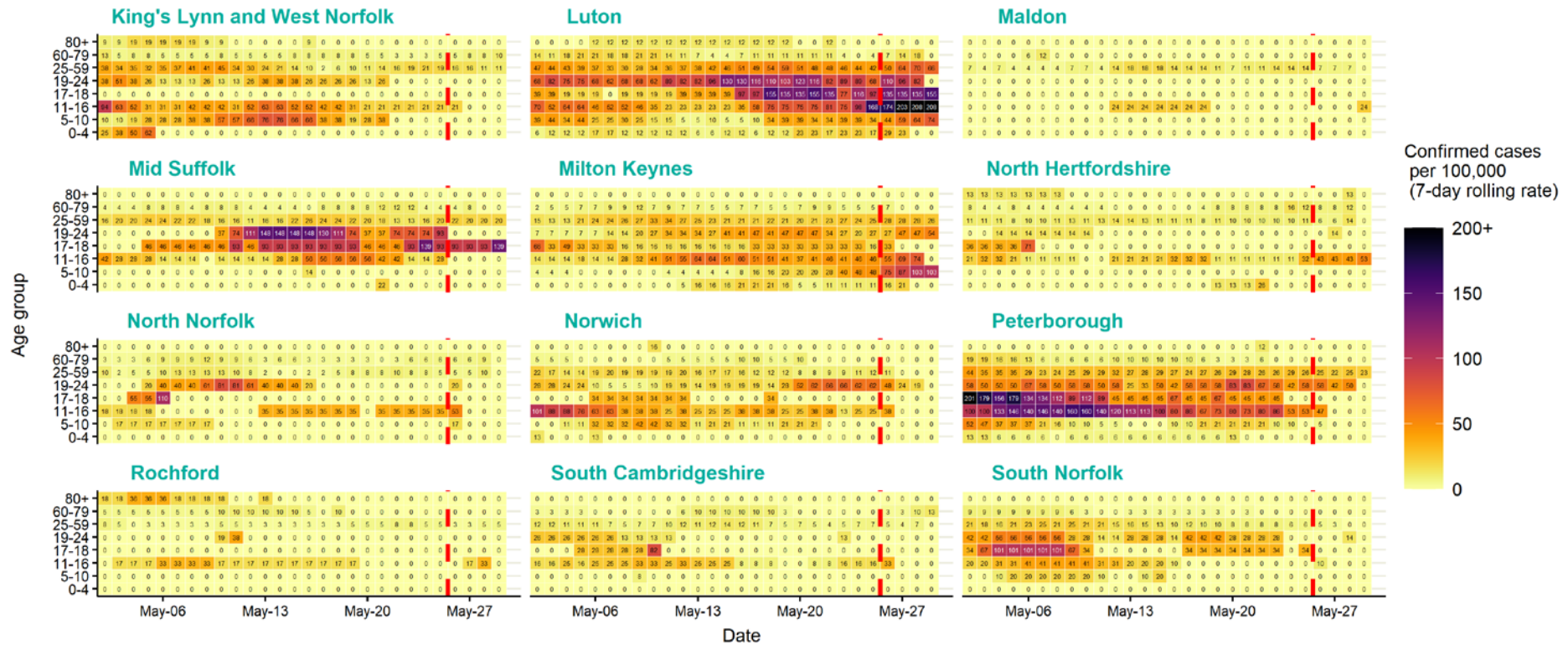
Source: Case data from SGSS. Produced by Outbreak Surveillance Team, PHE

The red dashed line on the heatmaps show the last four days where data may be incomplete due to reporting delays and removal of LFDs with accompanying negative PCR results.

Please consider this data provisional.

East of England age-stratified heatmap of weekly case rate by local authority, 2 May to 25 May 2021

EAST OF ENGLAND LOCAL AUTHORITIES Age-specific confirmed case rate



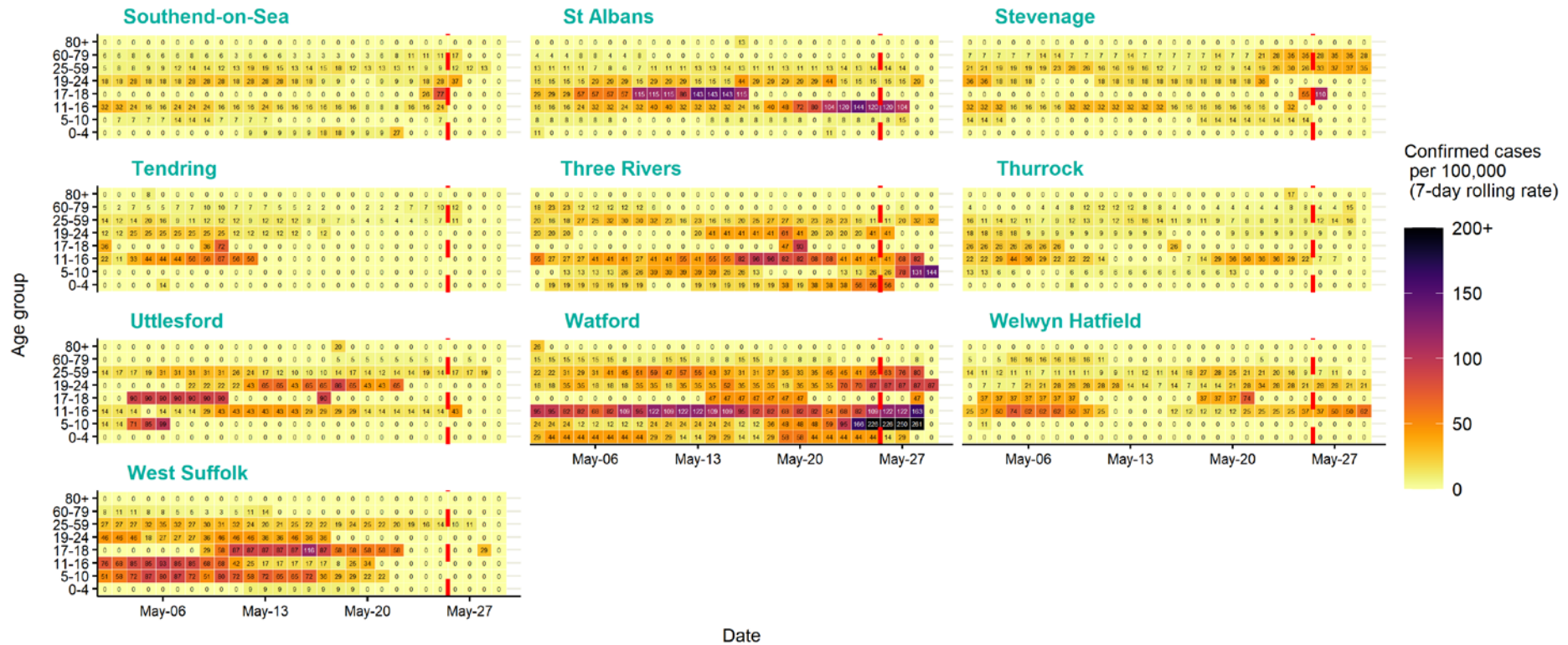
Source: Case data from SGSS. Produced by Outbreak Surveillance Team, PHE

The red dashed line on the heatmaps show the last four days where data may be incomplete due to reporting delays and removal of LFDs with accompanying negative PCR results.

Please consider this data provisional.

East of England age-stratified heatmap of weekly case rate by local authority, 2 May to 25 May 2021

EAST OF ENGLAND LOCAL AUTHORITIES Age-specific confirmed case rate



Date

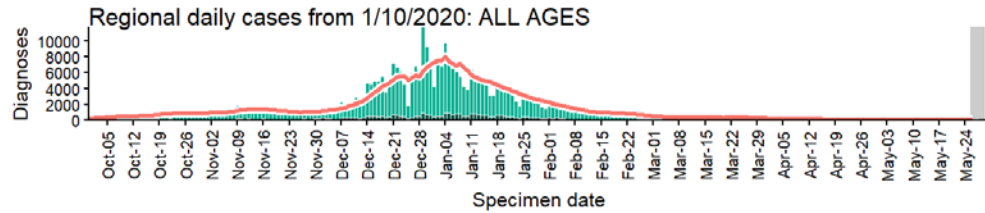
Source: Case data from SGSS. Produced by Outbreak Surveillance Team, PHE

The red dashed line on the heatmaps show the last four days where data may be incomplete due to reporting delays and removal of LFDs with accompanying negative PCR results.

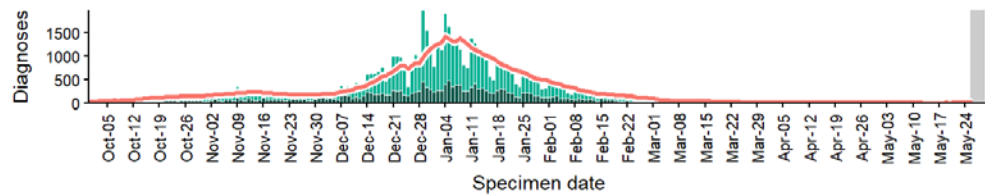
Please consider this data provisional.

East of England regional case numbers, testing numbers and positivity, 1 Oct to 29 May 2021

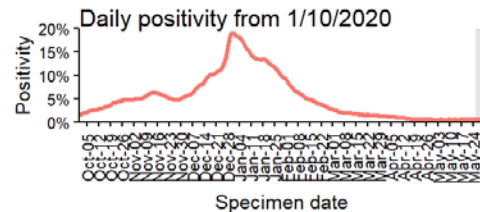
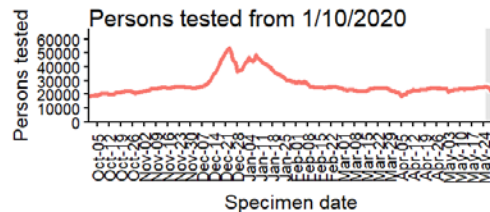
EAST OF ENGLAND Cases and persons tested up to May 29 2021



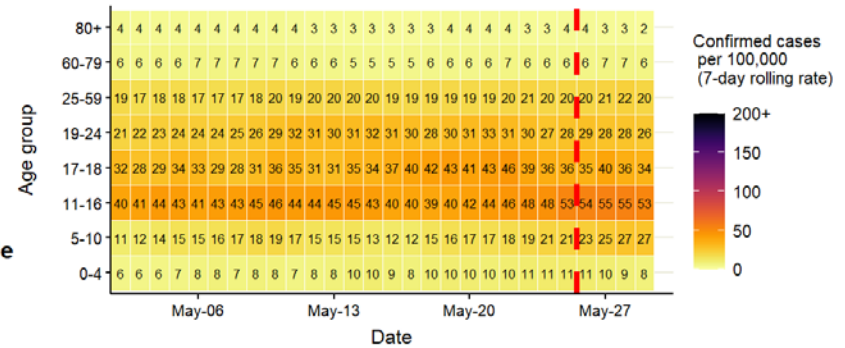
Regional daily cases from 1/10/2020: 60+ YEARS ONLY NOTE: different y-axis scale



4 days with incomplete data
 Pillar 1
 Pillar 2
 Total 7 day moving average (P1 + P2)



Regional age-stratified case rate heatmap for East of England: 2 May to 29 May 2021,



The red dotted line denotes the last four days, subject to reporting delays

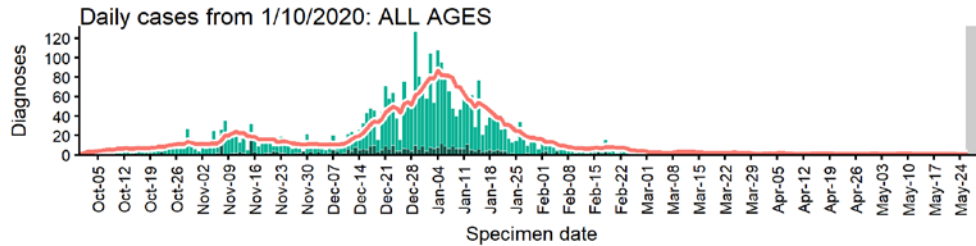
Data from SGSS. Produced by Outbreak Surveillance Team, PHE

The red dashed line on the heatmaps show the last four days where data may be incomplete due to reporting delays and removal of LFDs with accompanying negative PCR results.

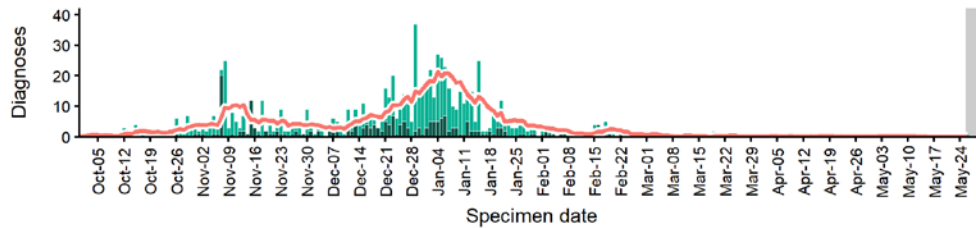
Please consider this data provisional.

Babergh case numbers, testing numbers and positivity, 1 Oct to 29 May 2021

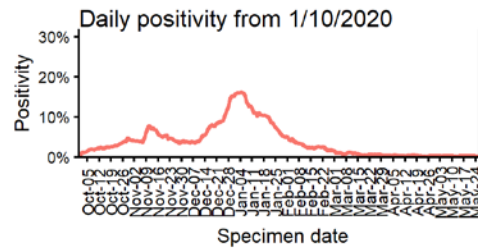
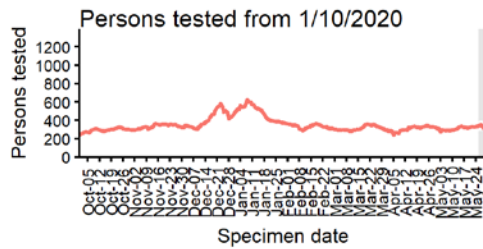
BABERGH Cases and persons tested up to May 29 2021



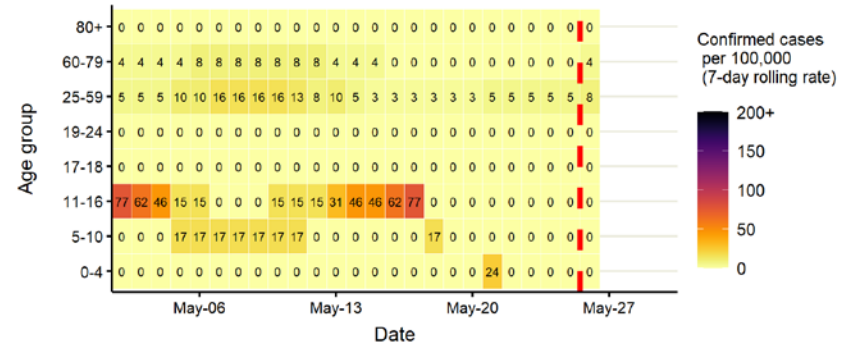
Daily cases from 1/10/2020: 60+ YEARS ONLY **NOTE: different y-axis scale**



4 days with incomplete data
 Pillar 1
 Pillar 2
 Total 7 day moving average (P1 + P2)



Age-stratified case rate heatmap for Babergh: 2 May to 29 May 2021

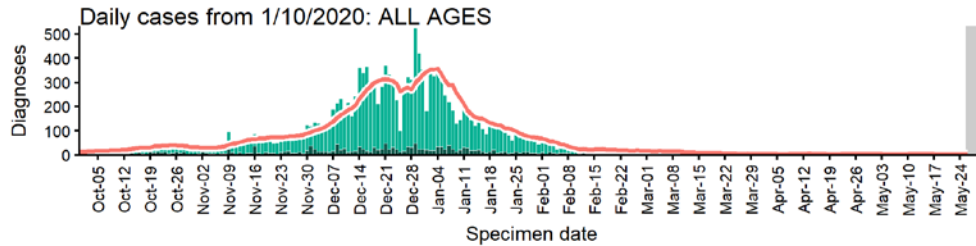


The red dashed line on the heatmaps show the last four days where data may be incomplete due to reporting delays and removal of LFDs with accompanying negative PCR results. Please consider this data provisional.

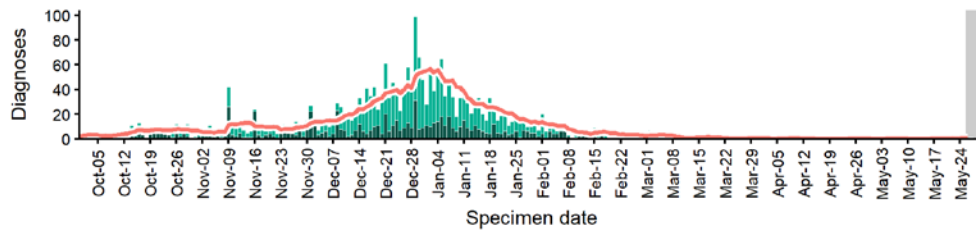
Data from SGSS. Produced by Outbreak Surveillance Team, PHE

Basildon case numbers, testing numbers and positivity, 1 Oct to 29 May 2021

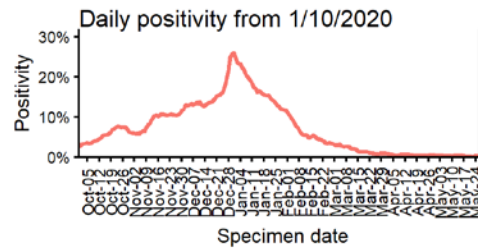
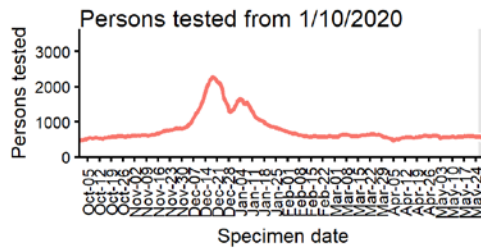
BASILDON
Cases and persons tested up to May 29 2021



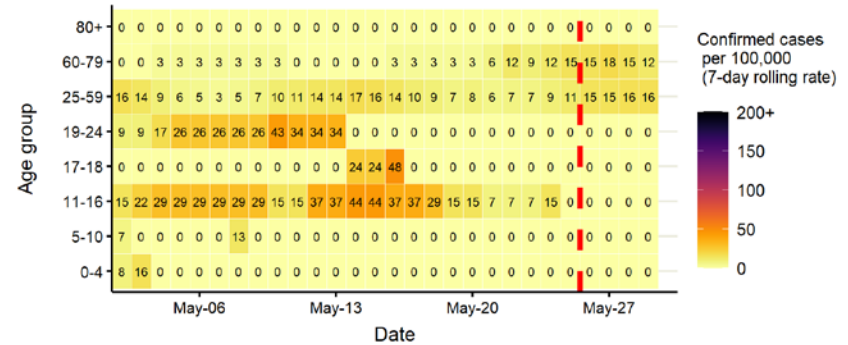
Daily cases from 1/10/2020: 60+ YEARS ONLY **NOTE: different y-axis scale**



4 days with incomplete data
 Pillar 1
 Pillar 2
 Total 7 day moving average (P1 + P2)



Age-stratified case rate heatmap for Basildon: 2 May to 29 May 2021

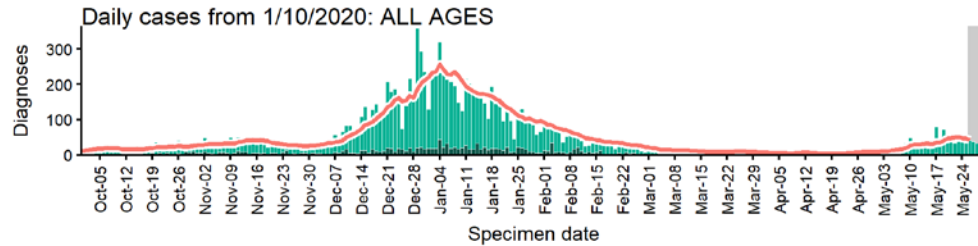


The red dashed line on the heatmaps show the last four days where data may be incomplete due to reporting delays and removal of LFDs with accompanying negative PCR results. Please consider this data provisional.

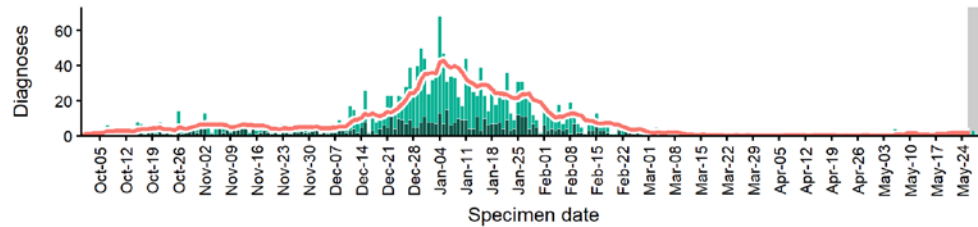
Data from SGSS. Produced by Outbreak Surveillance Team, PHE

Bedford case numbers, testing numbers and positivity, 1 Oct to 29 May 2021

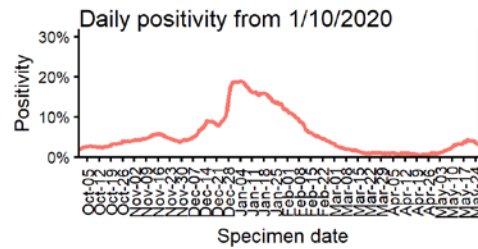
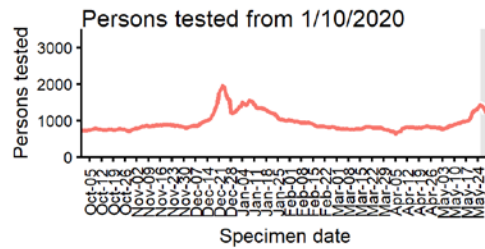
BEDFORD
Cases and persons tested up to May 29 2021



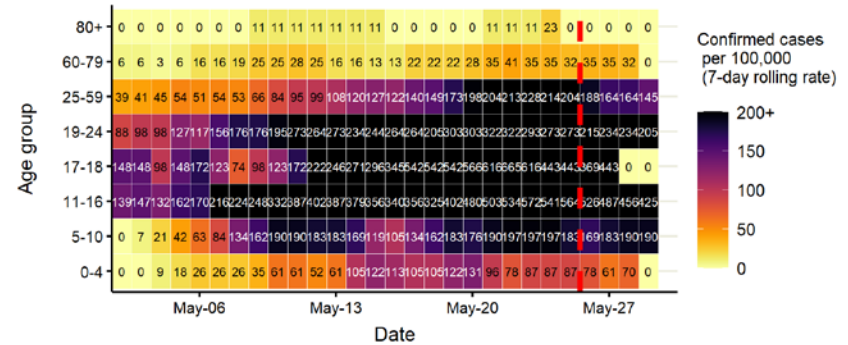
Daily cases from 1/10/2020: 60+ YEARS ONLY **NOTE: different y-axis scale**



4 days with incomplete data
 Pillar 1
 Pillar 2
 Total 7 day moving average (P1 + P2)



Age-stratified case rate heatmap for Bedford: 2 May to 29 May 2021

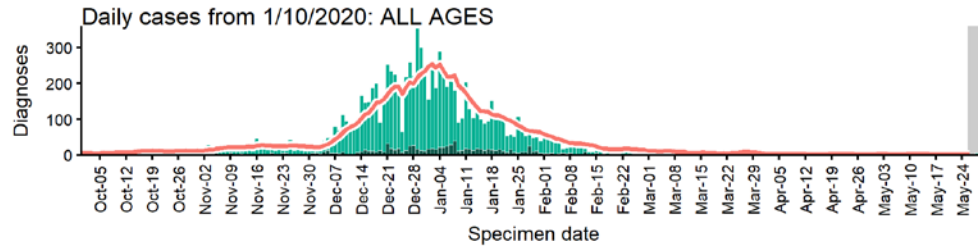


The red dashed line on the heatmaps show the last four days where data may be incomplete due to reporting delays and removal of LFDs with accompanying negative PCR results. Please consider this data provisional.

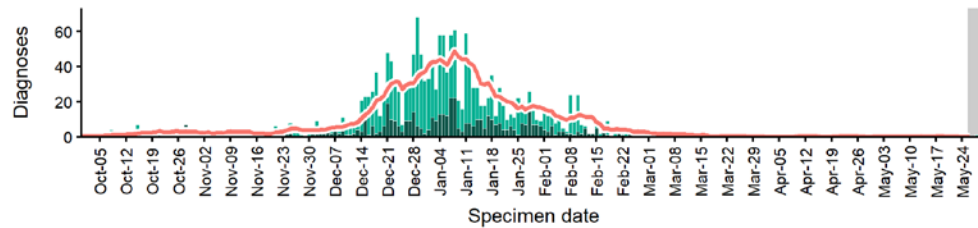
Data from SGSS. Produced by Outbreak Surveillance Team, PHE

Braintree case numbers, testing numbers and positivity, 1 Oct to 29 May 2021

BRAINTREE
Cases and persons tested up to May 29 2021

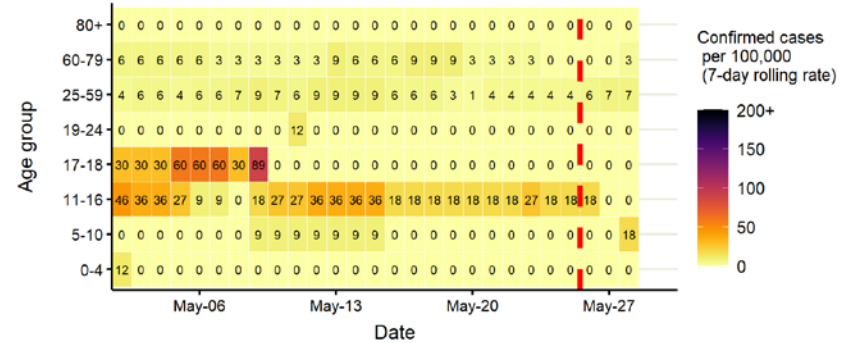


Daily cases from 1/10/2020: 60+ YEARS ONLY **NOTE: different y-axis scale**

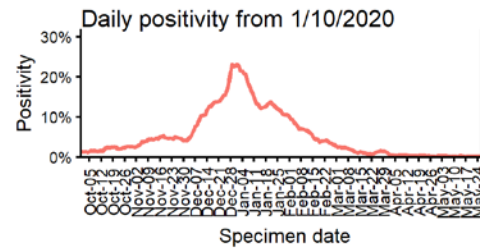
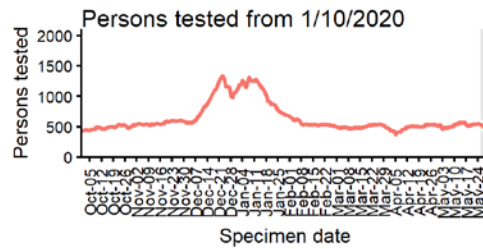


4 days with incomplete data Pillar 1 Pillar 2 Total 7 day moving average (P1 + P2)

Age-stratified case rate heatmap for Braintree: 2 May to 29 May 2021



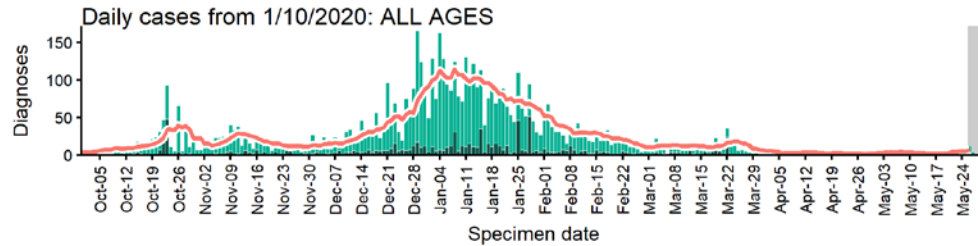
The red dashed line on the heatmaps show the last four days where data may be incomplete due to reporting delays and removal of LFDs with accompanying negative PCR results. Please consider this data provisional.



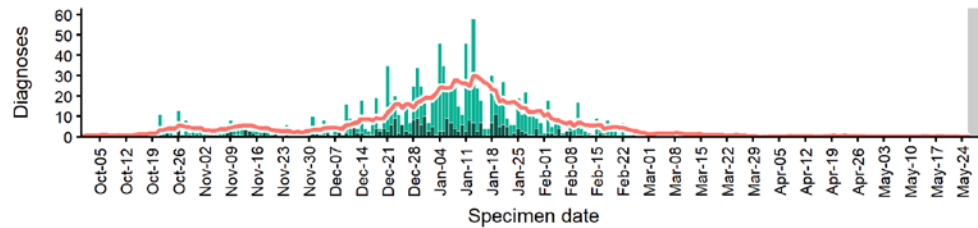
Data from SGSS. Produced by Outbreak Surveillance Team, PHE

Breckland case numbers, testing numbers and positivity, 1 Oct to 29 May 2021

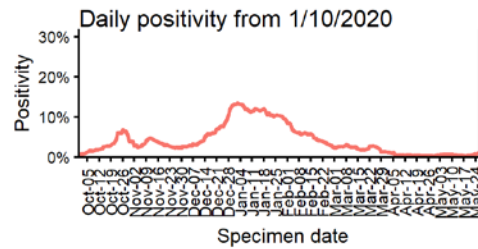
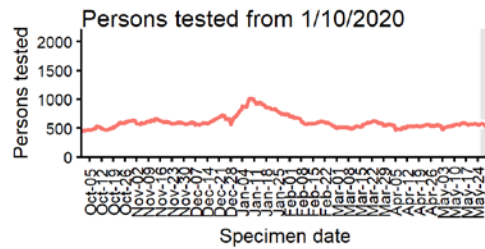
BRECKLAND
Cases and persons tested up to May 29 2021



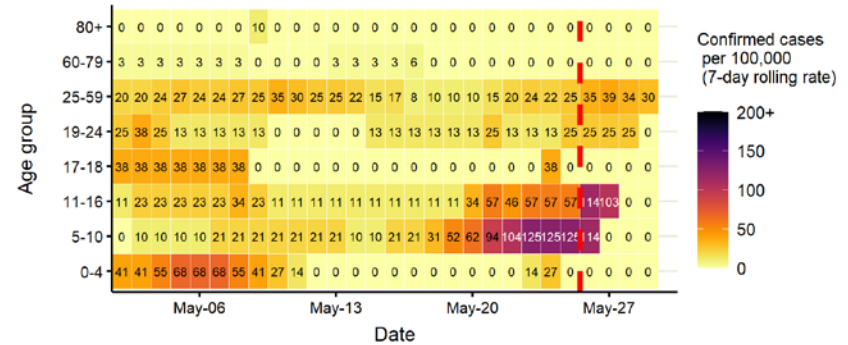
Daily cases from 1/10/2020: 60+ YEARS ONLY **NOTE: different y-axis scale**



4 days with incomplete data
 Pillar 1
 Pillar 2
 Total 7 day moving average (P1 + P2)



Age-stratified case rate heatmap for Breckland: 2 May to 29 May 2021

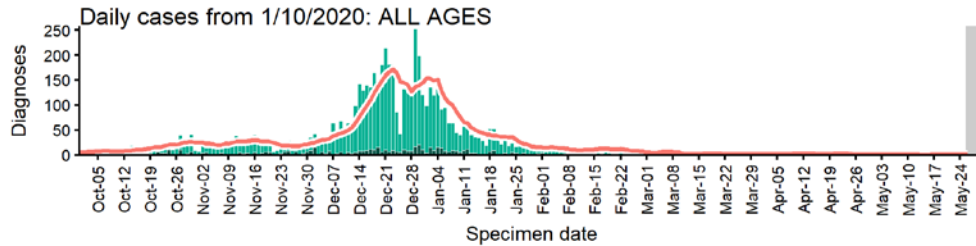


The red dashed line on the heatmaps show the last four days where data may be incomplete due to reporting delays and removal of LFDs with accompanying negative PCR results. Please consider this data provisional.

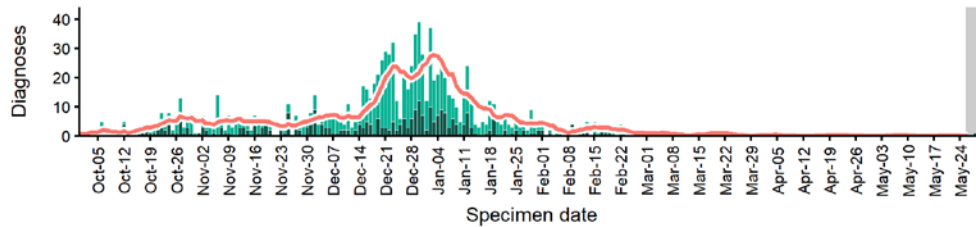
Data from SGSS. Produced by Outbreak Surveillance Team, PHE

Brentwood case numbers, testing numbers and positivity, 1 Oct to 29 May 2021

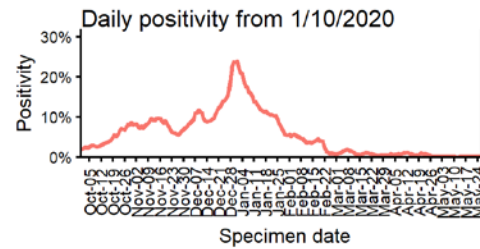
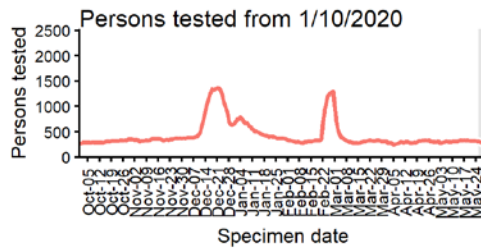
BRENTWOOD
Cases and persons tested up to May 29 2021



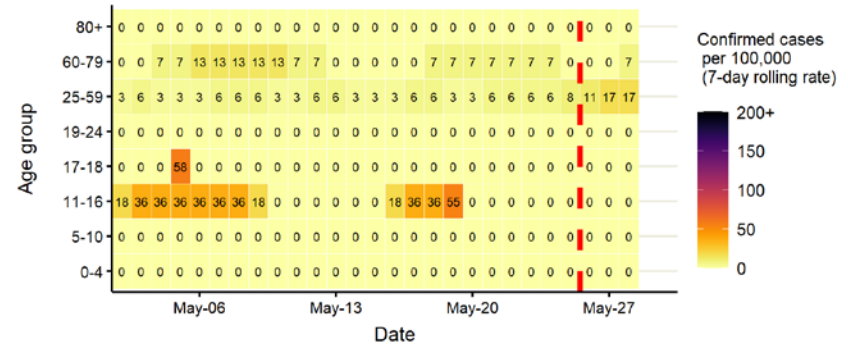
Daily cases from 1/10/2020: 60+ YEARS ONLY **NOTE: different y-axis scale**



4 days with incomplete data
 Pillar 1
 Pillar 2
 Total 7 day moving average (P1 + P2)



Age-stratified case rate heatmap for Brentwood: 2 May to 29 May 2021

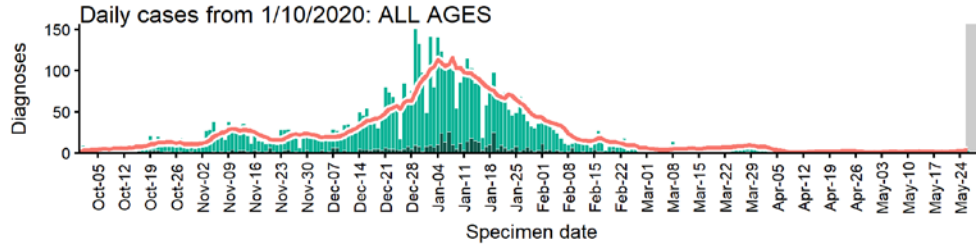


The red dashed line on the heatmaps show the last four days where data may be incomplete due to reporting delays and removal of LFDs with accompanying negative PCR results. Please consider this data provisional.

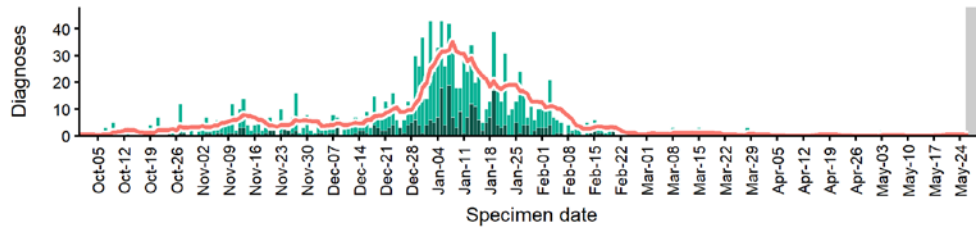
Data from SGSS. Produced by Outbreak Surveillance Team, PHE

Broadland case numbers, testing numbers and positivity, 1 Oct to 29 May 2021

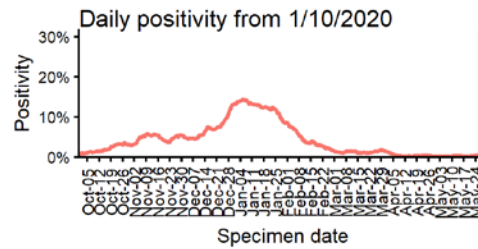
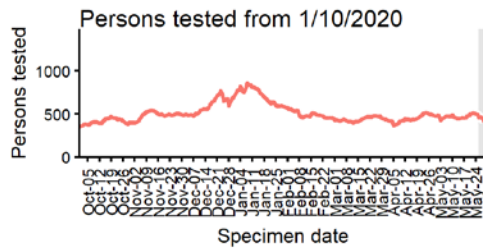
BROADLAND
Cases and persons tested up to May 29 2021



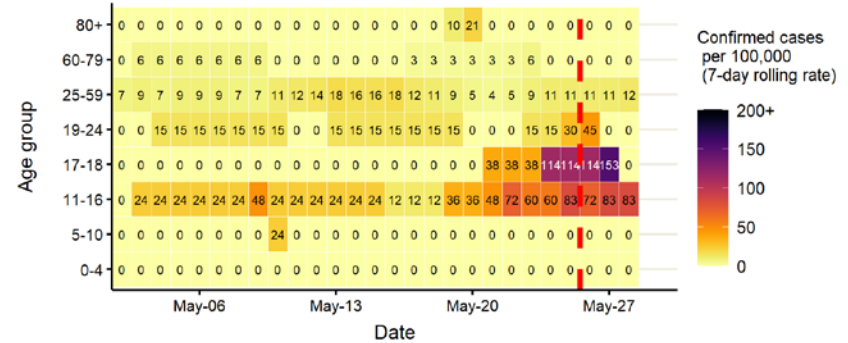
Daily cases from 1/10/2020: 60+ YEARS ONLY **NOTE: different y-axis scale**



4 days with incomplete data
 Pillar 1
 Pillar 2
 Total 7 day moving average (P1 + P2)



Age-stratified case rate heatmap for Broadland: 2 May to 29 May 2021

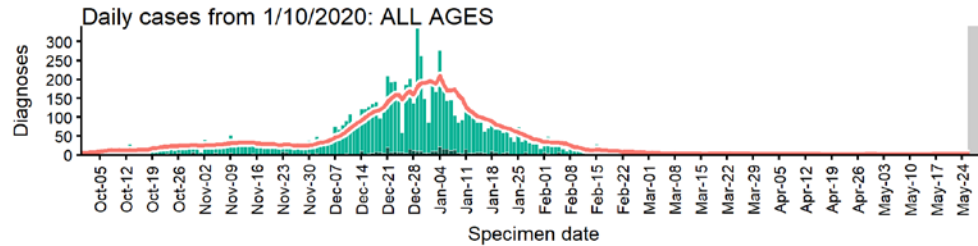


The red dashed line on the heatmaps show the last four days where data may be incomplete due to reporting delays and removal of LFDs with accompanying negative PCR results. Please consider this data provisional.

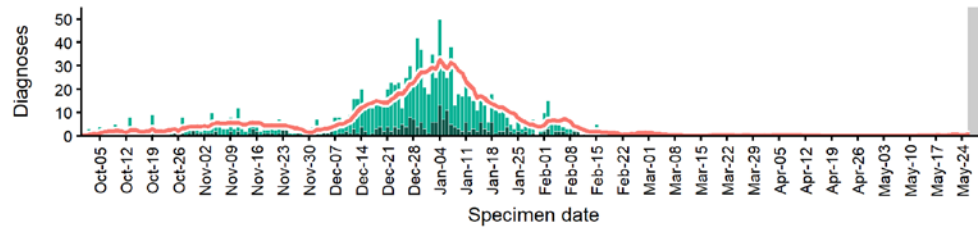
Data from SGSS. Produced by Outbreak Surveillance Team, PHE

Broxbourne case numbers, testing numbers and positivity, 1 Oct to 29 May 2021

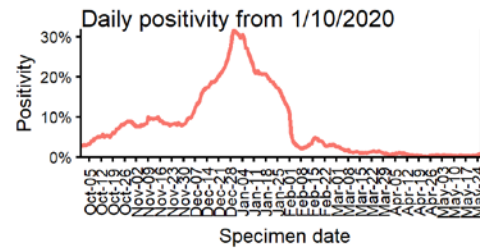
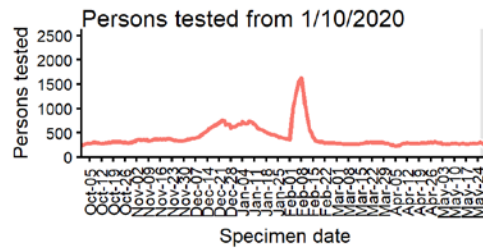
BROXBOURNE Cases and persons tested up to May 29 2021



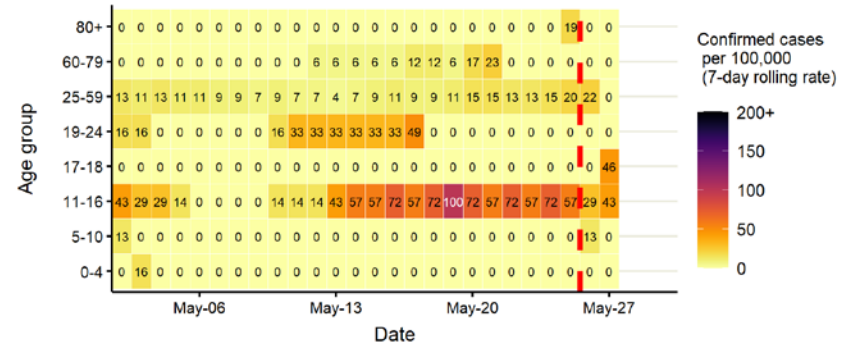
Daily cases from 1/10/2020: 60+ YEARS ONLY **NOTE: different y-axis scale**



4 days with incomplete data Pillar 1 Pillar 2 Total 7 day moving average (P1 + P2)



Age-stratified case rate heatmap for Broxbourne: 2 May to 29 May 2021

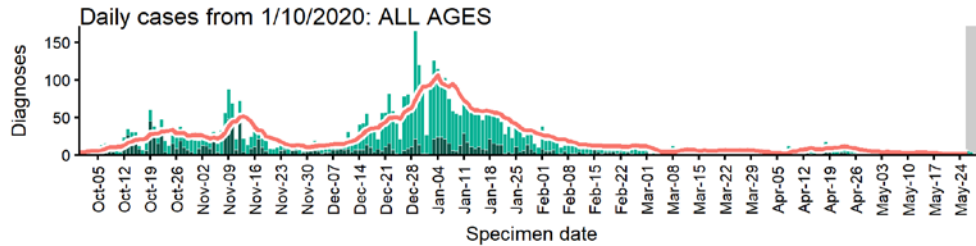


The red dashed line on the heatmaps show the last four days where data may be incomplete due to reporting delays and removal of LFDs with accompanying negative PCR results.

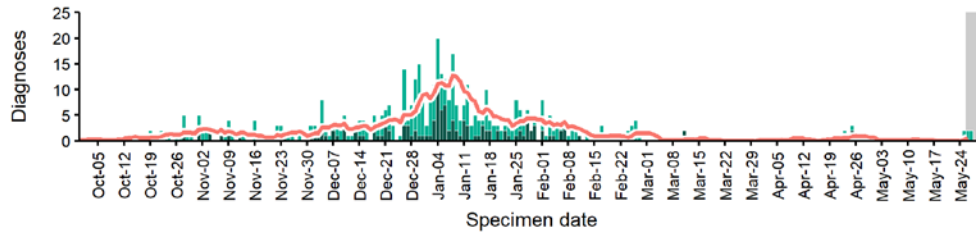
Please consider this data provisional.

Cambridge case numbers, testing numbers and positivity, 1 Oct to 29 May 2021

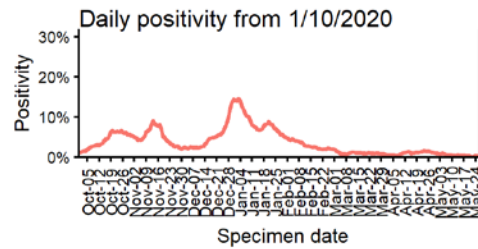
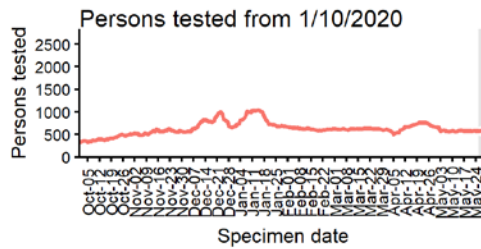
CAMBRIDGE Cases and persons tested up to May 29 2021



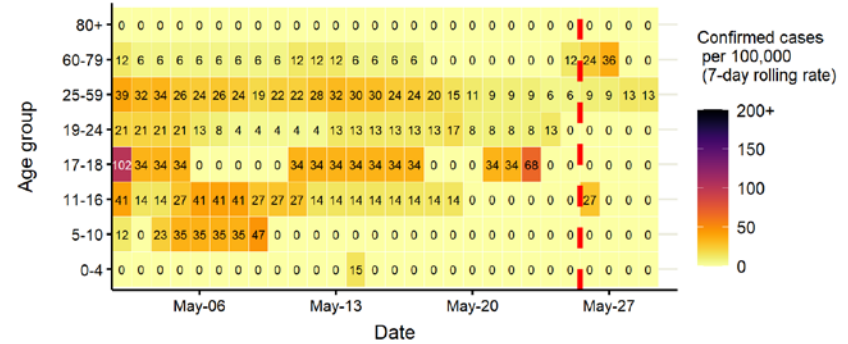
Daily cases from 1/10/2020: 60+ YEARS ONLY **NOTE: different y-axis scale**



4 days with incomplete data Pillar 1 Pillar 2 Total 7 day moving average (P1 + P2)



Age-stratified case rate heatmap for Cambridge: 2 May to 29 May 2021

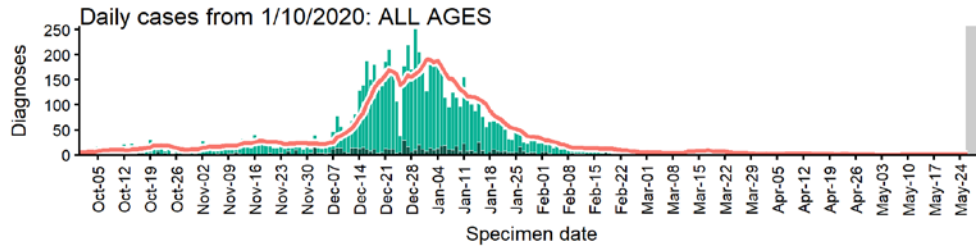


The red dashed line on the heatmaps show the last four days where data may be incomplete due to reporting delays and removal of LFDs with accompanying negative PCR results. Please consider this data provisional.

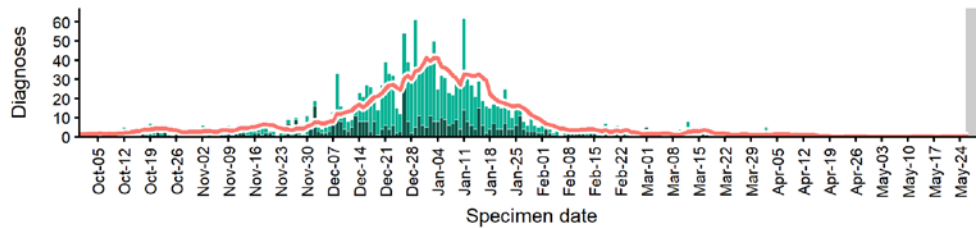
Data from SGSS. Produced by Outbreak Surveillance Team, PHE

Castle Point case numbers, testing numbers and positivity, 1 Oct to 29 May 2021

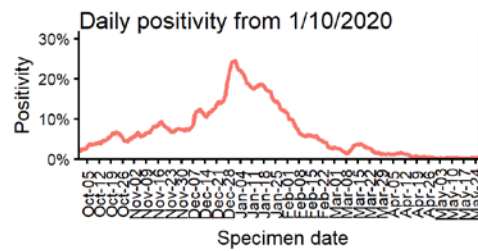
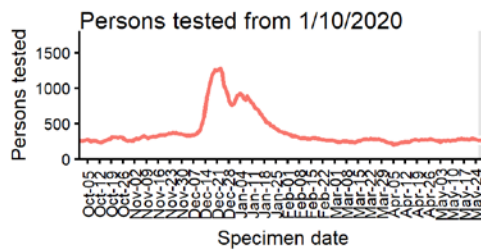
CASTLE POINT
Cases and persons tested up to May 29 2021



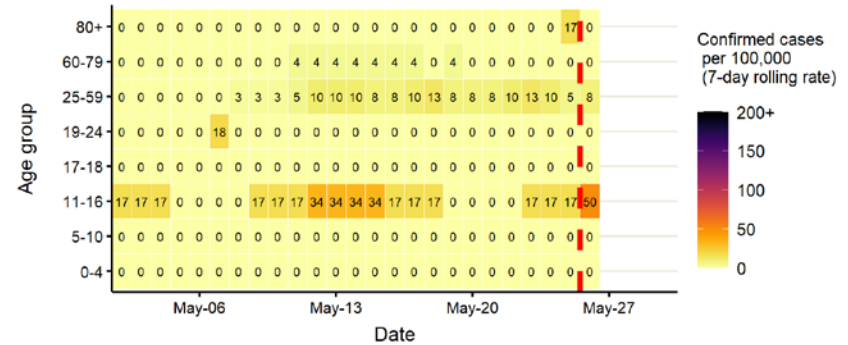
Daily cases from 1/10/2020: 60+ YEARS ONLY **NOTE: different y-axis scale**



4 days with incomplete data
 Pillar 1
 Pillar 2
 Total 7 day moving average (P1 + P2)



Age-stratified case rate heatmap for Castle Point: 2 May to 29 May 2021

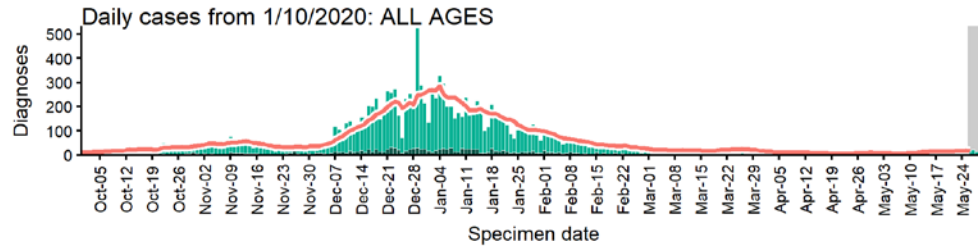


The red dashed line on the heatmaps show the last four days where data may be incomplete due to reporting delays and removal of LFDs with accompanying negative PCR results. Please consider this data provisional.

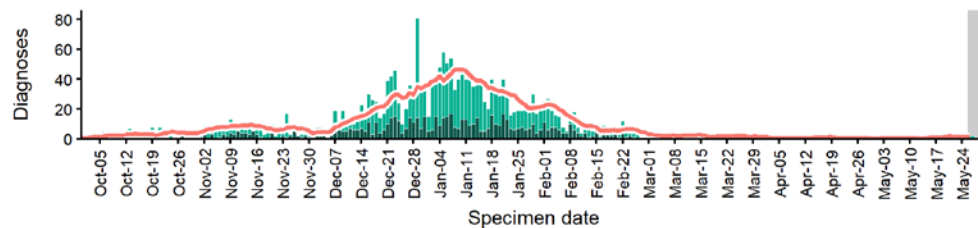
Data from SGSS. Produced by Outbreak Surveillance Team, PHE

Central Bedfordshire case numbers, testing numbers and positivity, 1 Oct to 29 May 2021

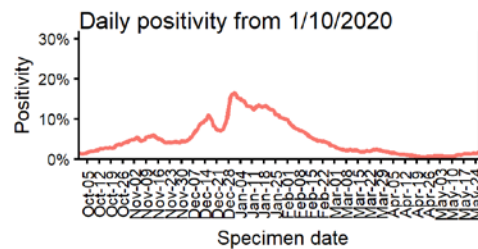
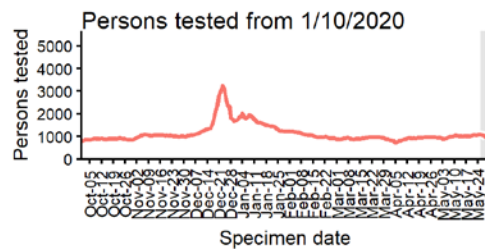
**CENTRAL BEDFORDSHIRE
Cases and persons tested up to May 29 2021**



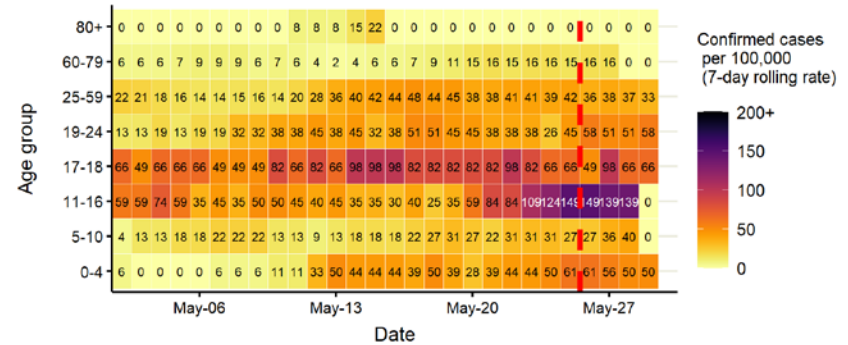
Daily cases from 1/10/2020: 60+ YEARS ONLY **NOTE: different y-axis scale**



4 days with incomplete data Pillar 1 Pillar 2 Total 7 day moving average (P1 + P2)



Age-stratified case rate heatmap for Central Bedfordshire: 2 May to 29 May 2021

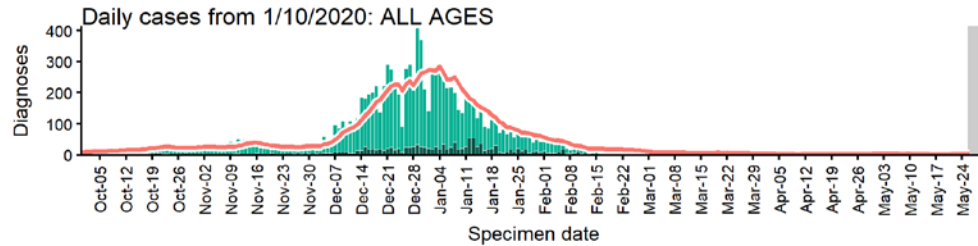


The red dashed line on the heatmaps show the last four days where data may be incomplete due to reporting delays and removal of LFDs with accompanying negative PCR results. Please consider this data provisional.

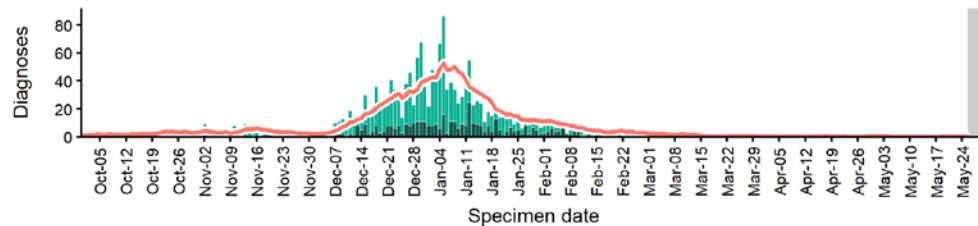
Data from SGSS. Produced by Outbreak Surveillance Team, PHE

Chelmsford case numbers, testing numbers and positivity, 1 Oct to 29 May 2021

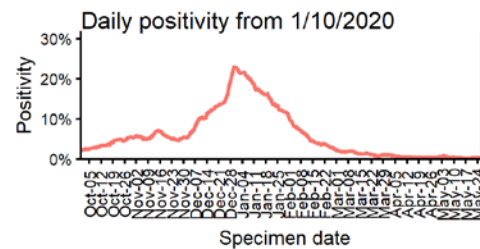
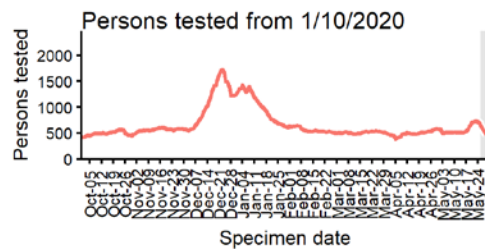
CHELMSFORD Cases and persons tested up to May 29 2021



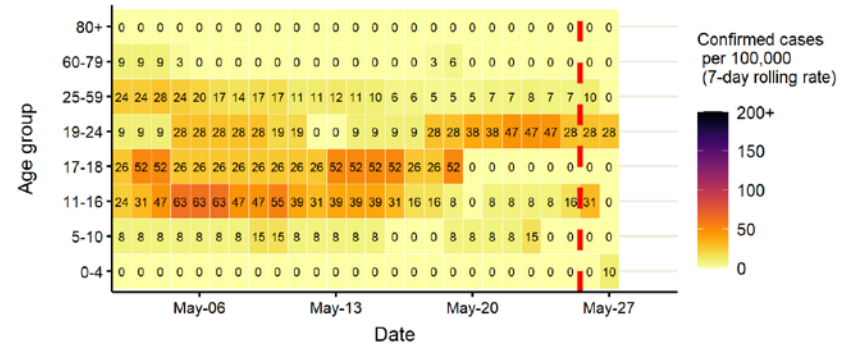
Daily cases from 1/10/2020: 60+ YEARS ONLY **NOTE: different y-axis scale**



4 days with incomplete data
 Pillar 1
 Pillar 2
 Total 7 day moving average (P1 + P2)



Age-stratified case rate heatmap for Chelmsford: 2 May to 29 May 2021

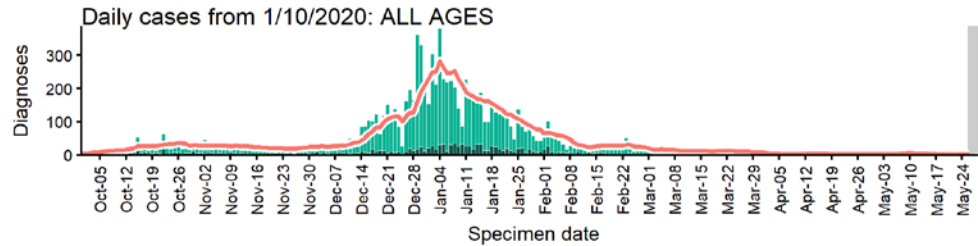


The red dashed line on the heatmaps show the last four days where data may be incomplete due to reporting delays and removal of LFDs with accompanying negative PCR results. Please consider this data provisional.

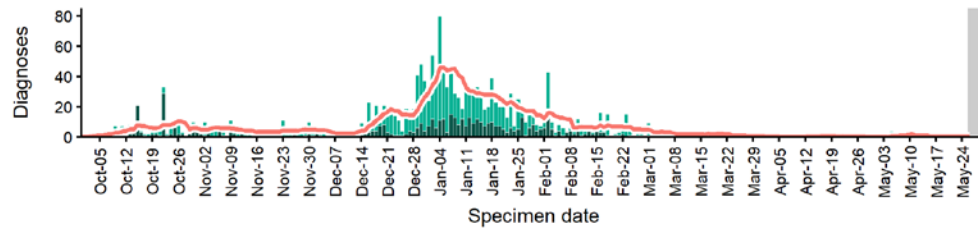
Data from SGSS. Produced by Outbreak Surveillance Team, PHE

Colchester case numbers, testing numbers and positivity, 1 Oct to 29 May 2021

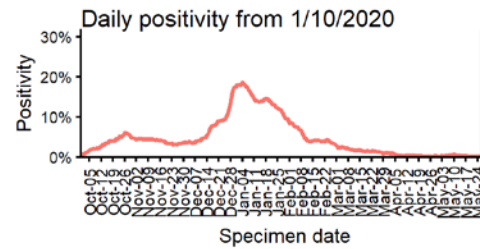
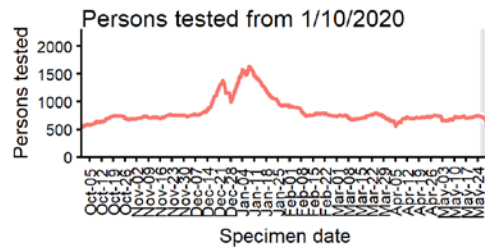
COLCHESTER Cases and persons tested up to May 29 2021



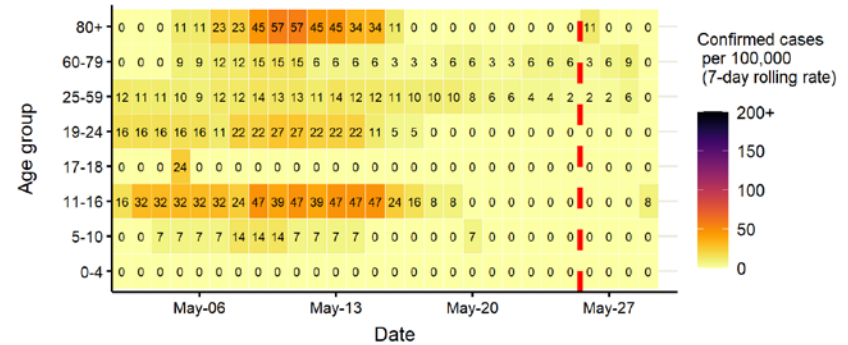
Daily cases from 1/10/2020: 60+ YEARS ONLY **NOTE: different y-axis scale**



4 days with incomplete data
 Pillar 1
 Pillar 2
 Total 7 day moving average (P1 + P2)



Age-stratified case rate heatmap for Colchester: 2 May to 29 May 2021

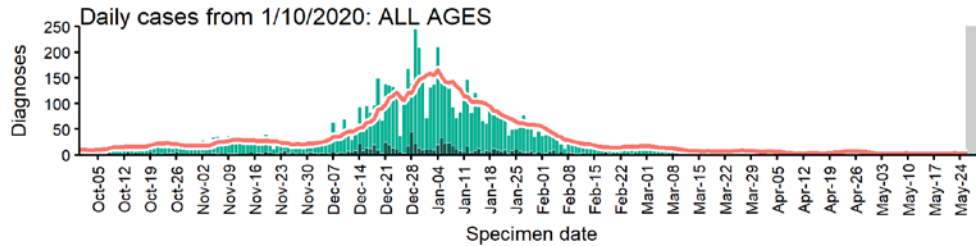


The red dashed line on the heatmaps show the last four days where data may be incomplete due to reporting delays and removal of LFDs with accompanying negative PCR results. Please consider this data provisional.

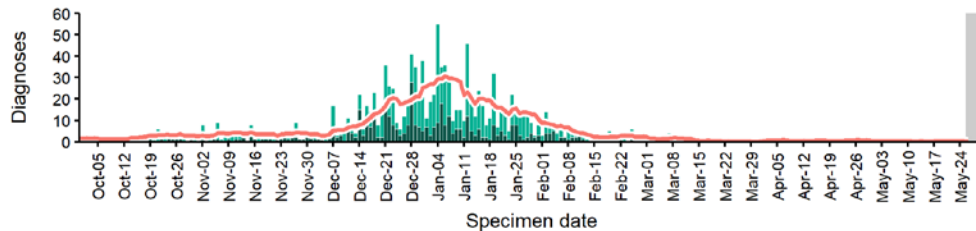
Data from SGSS. Produced by Outbreak Surveillance Team, PHE

Dacorum case numbers, testing numbers and positivity, 1 Oct to 29 May 2021

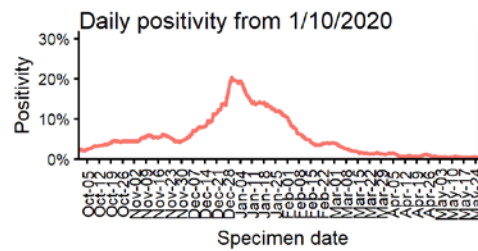
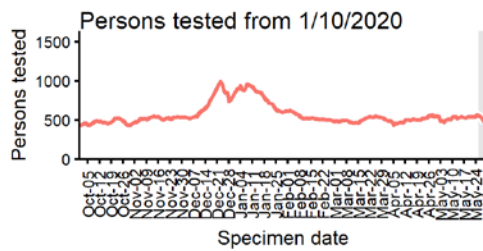
DACORUM
Cases and persons tested up to May 29 2021



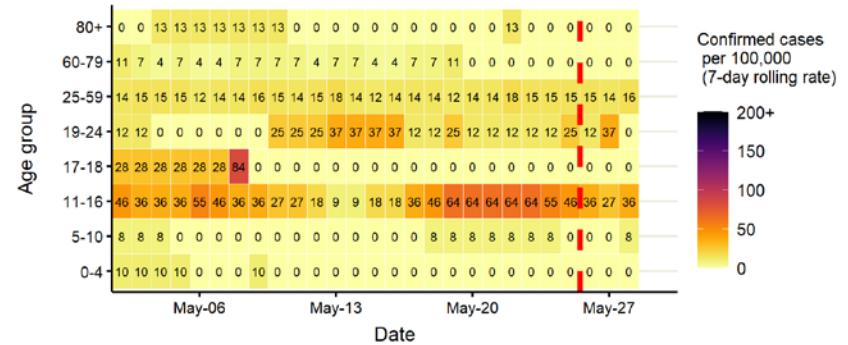
Daily cases from 1/10/2020: 60+ YEARS ONLY **NOTE: different y-axis scale**



4 days with incomplete data
 Pillar 1
 Pillar 2
 Total 7 day moving average (P1 + P2)



Age-stratified case rate heatmap for Dacorum: 2 May to 29 May 2021

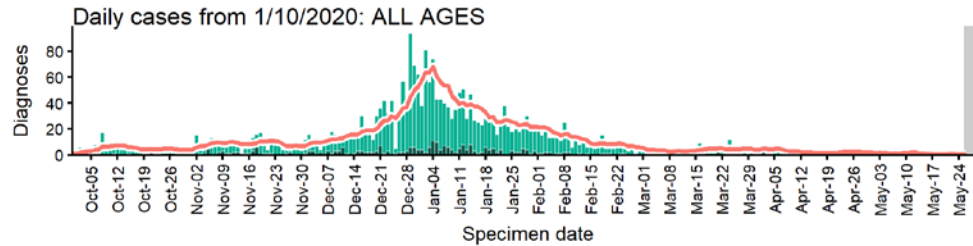


The red dashed line on the heatmaps show the last four days where data may be incomplete due to reporting delays and removal of LFDs with accompanying negative PCR results. Please consider this data provisional.

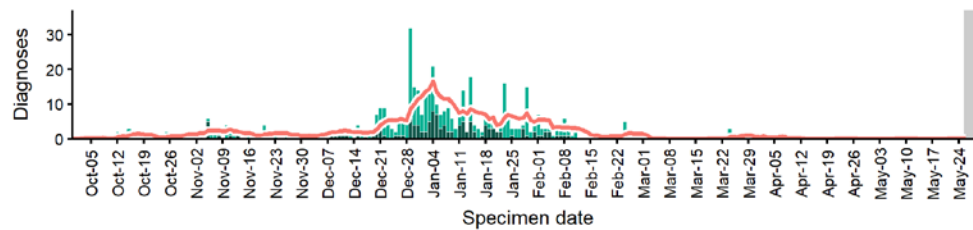
Data from SGSS. Produced by Outbreak Surveillance Team, PHE

East Cambridgeshire case numbers, testing numbers and positivity, 1 Oct to 29 May 2021

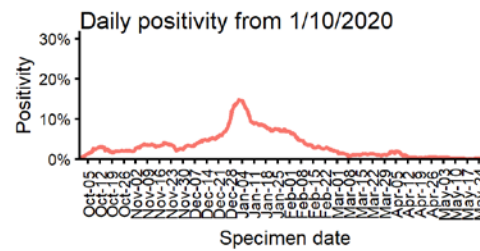
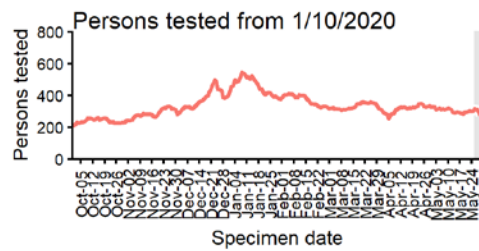
EAST CAMBRIDGESHIRE
Cases and persons tested up to May 29 2021



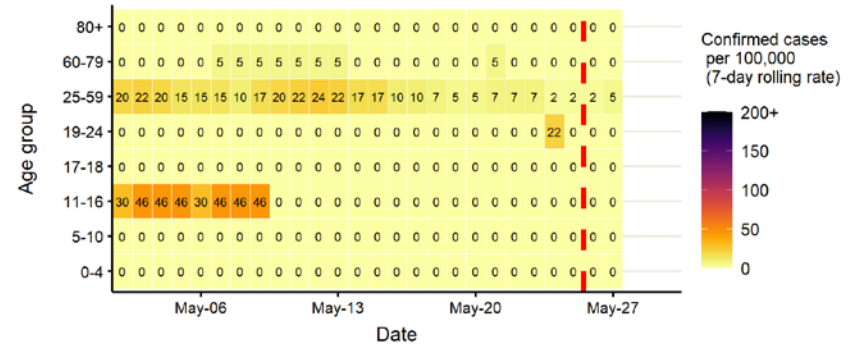
Daily cases from 1/10/2020: 60+ YEARS ONLY **NOTE: different y-axis scale**



4 days with incomplete data Pillar 1 Pillar 2 Total 7 day moving average (P1 + P2)



Age-stratified case rate heatmap for East Cambridgeshire: 2 May to 29 May 2021

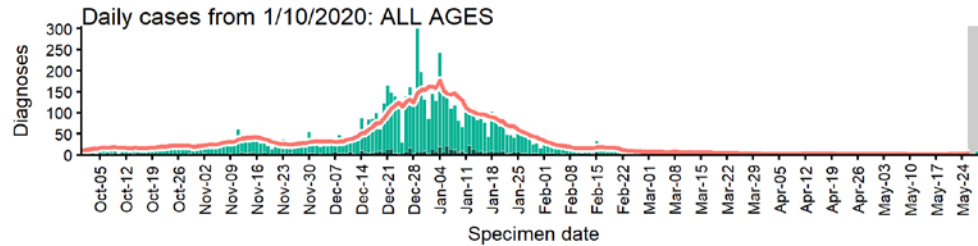


The red dashed line on the heatmaps show the last four days where data may be incomplete due to reporting delays and removal of LFDs with accompanying negative PCR results. Please consider this data provisional.

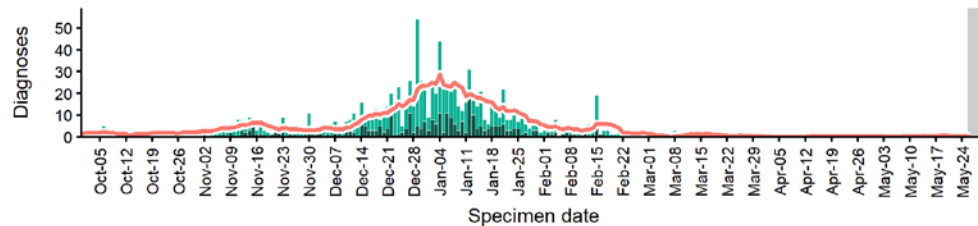
Data from SGSS. Produced by Outbreak Surveillance Team, PHE

East Hertfordshire case numbers, testing numbers and positivity, 1 Oct to 29 May 2021

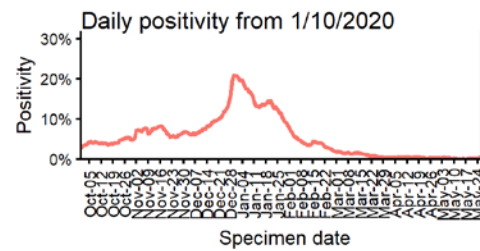
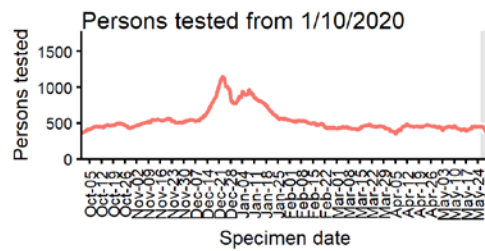
EAST HERTFORDSHIRE Cases and persons tested up to May 29 2021



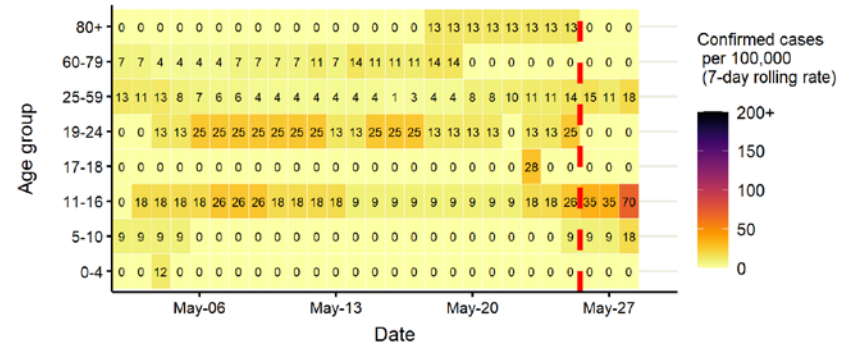
Daily cases from 1/10/2020: 60+ YEARS ONLY **NOTE: different y-axis scale**



4 days with incomplete data Pillar 1 Pillar 2 Total 7 day moving average (P1 + P2)



Age-stratified case rate heatmap for East Hertfordshire: 2 May to 29 May 2021

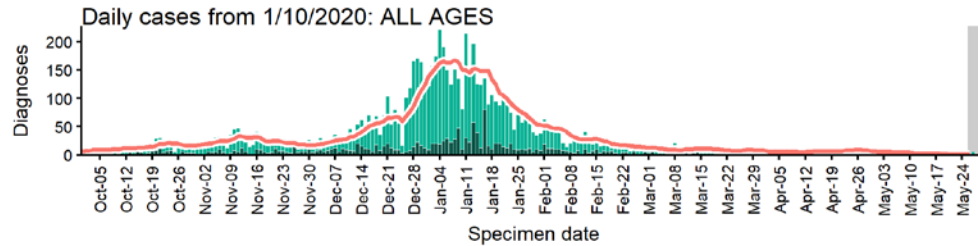


The red dashed line on the heatmaps show the last four days where data may be incomplete due to reporting delays and removal of LFDs with accompanying negative PCR results.

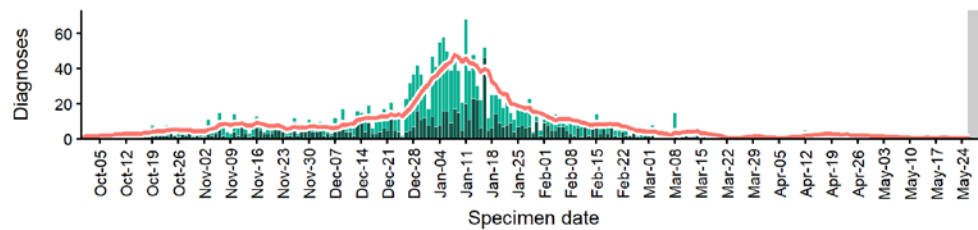
Please consider this data provisional.

East Suffolk case numbers, testing numbers and positivity, 1 Oct to 29 May 2021

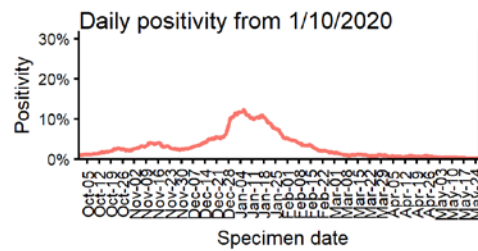
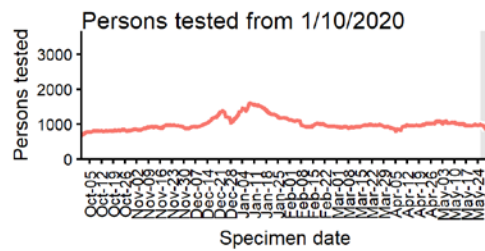
EAST SUFFOLK
Cases and persons tested up to May 29 2021



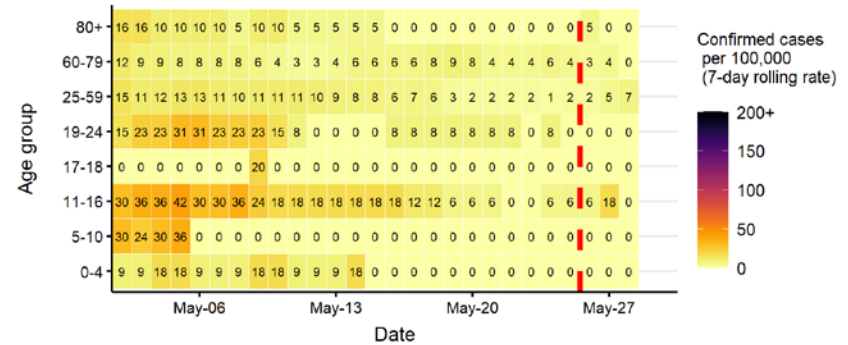
Daily cases from 1/10/2020: 60+ YEARS ONLY **NOTE: different y-axis scale**



4 days with incomplete data Pillar 1 Pillar 2 Total 7 day moving average (P1 + P2)



Age-stratified case rate heatmap for East Suffolk: 2 May to 29 May 2021

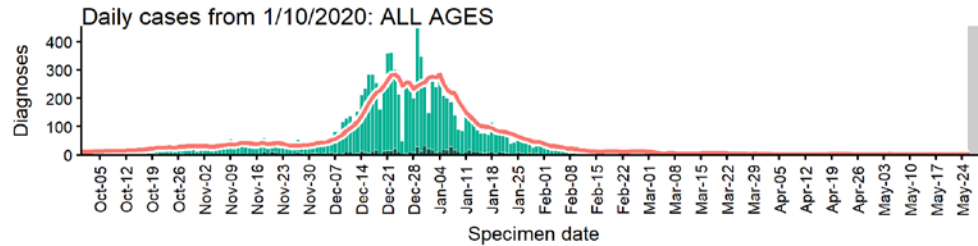


The red dashed line on the heatmaps show the last four days where data may be incomplete due to reporting delays and removal of LFDs with accompanying negative PCR results. Please consider this data provisional.

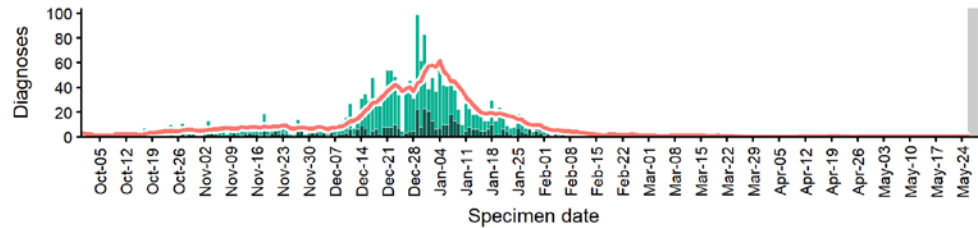
Data from SGSS. Produced by Outbreak Surveillance Team, PHE

Epping Forest case numbers, testing numbers and positivity, 1 Oct to 29 May 2021

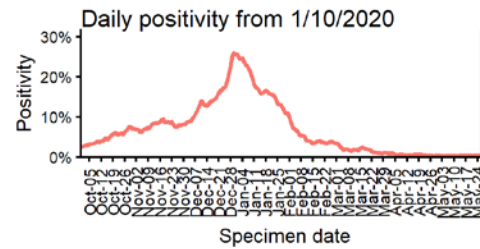
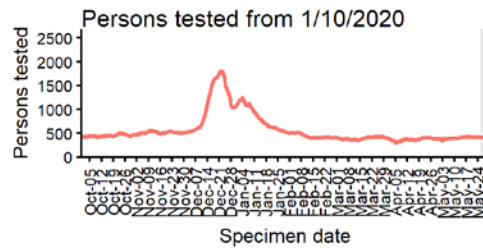
EPPING FOREST Cases and persons tested up to May 29 2021



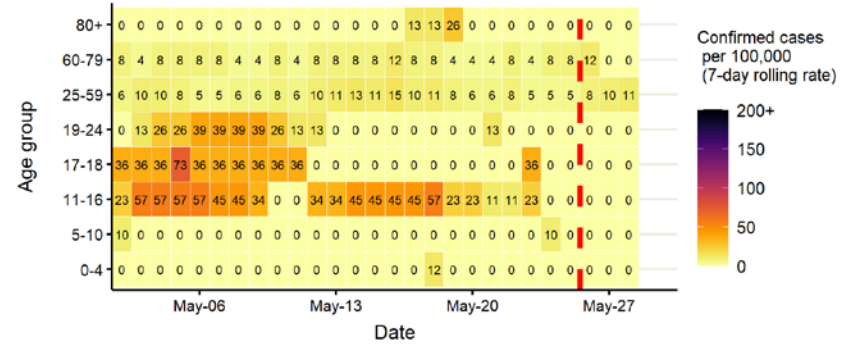
Daily cases from 1/10/2020: 60+ YEARS ONLY **NOTE: different y-axis scale**



4 days with incomplete data
 Pillar 1
 Pillar 2
 Total 7 day moving average (P1 + P2)



Age-stratified case rate heatmap for Epping Forest: 2 May to 29 May 2021

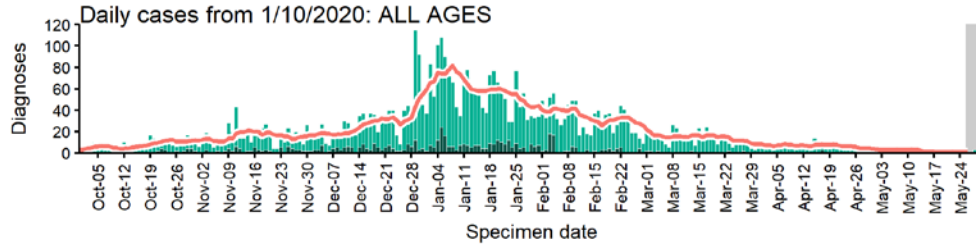


The red dashed line on the heatmaps show the last four days where data may be incomplete due to reporting delays and removal of LFDs with accompanying negative PCR results. Please consider this data provisional.

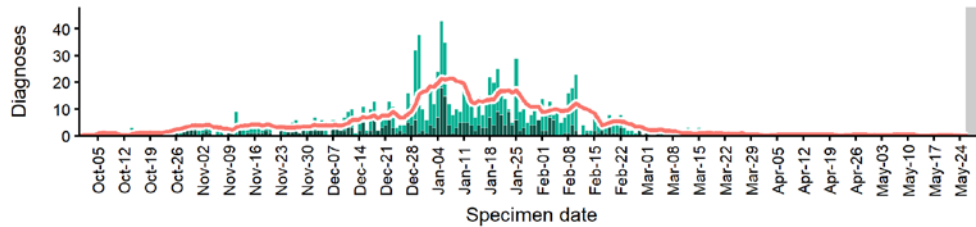
Data from SGSS. Produced by Outbreak Surveillance Team, PHE

Fenland case numbers, testing numbers and positivity, 1 Oct to 29 May 2021

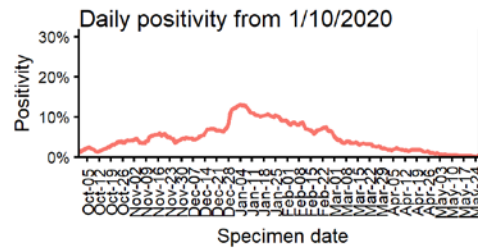
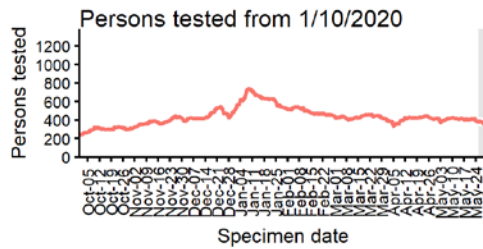
FENLAND
Cases and persons tested up to May 29 2021



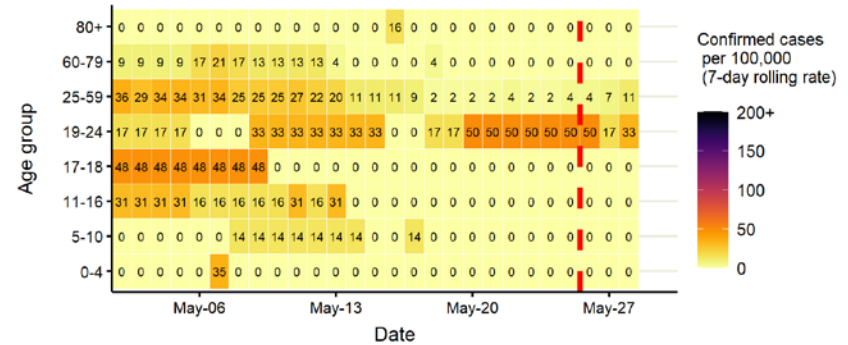
Daily cases from 1/10/2020: 60+ YEARS ONLY **NOTE: different y-axis scale**



4 days with incomplete data
 Pillar 1
 Pillar 2
 Total 7 day moving average (P1 + P2)



Age-stratified case rate heatmap for Fenland: 2 May to 29 May 2021

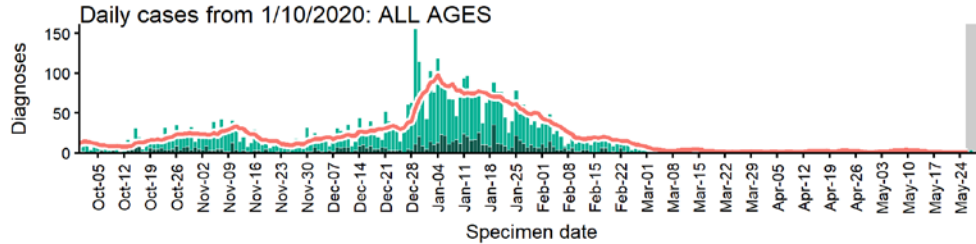


The red dashed line on the heatmaps show the last four days where data may be incomplete due to reporting delays and removal of LFDs with accompanying negative PCR results. Please consider this data provisional.

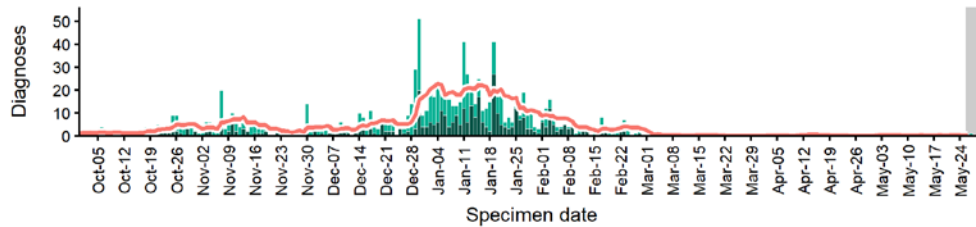
Data from SGSS. Produced by Outbreak Surveillance Team, PHE

Great Yarmouth case numbers, testing numbers and positivity, 1 Oct to 29 May 2021

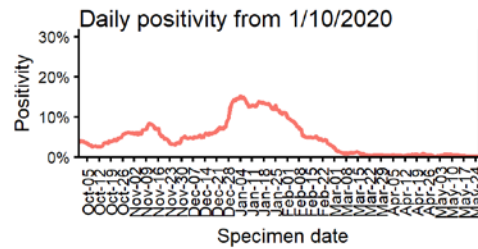
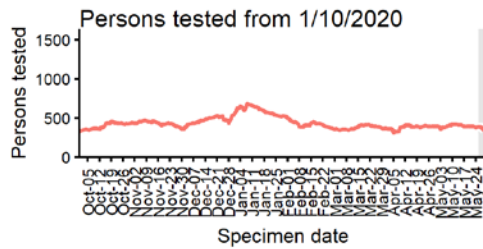
GREAT YARMOUTH
Cases and persons tested up to May 29 2021



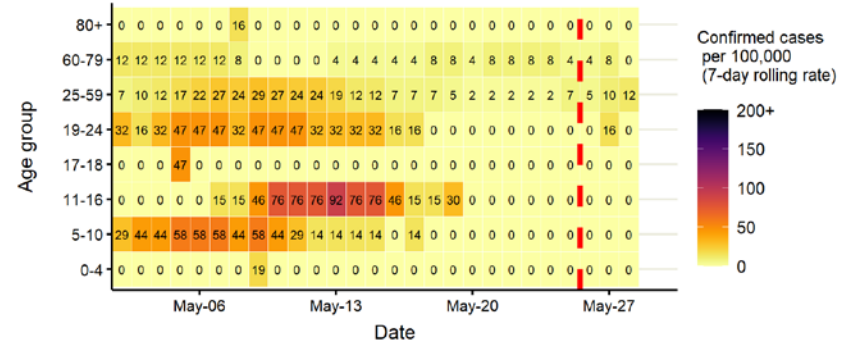
Daily cases from 1/10/2020: 60+ YEARS ONLY **NOTE: different y-axis scale**



4 days with incomplete data
 Pillar 1
 Pillar 2
 Total 7 day moving average (P1 + P2)



Age-stratified case rate heatmap for Great Yarmouth: 2 May to 29 May 2021

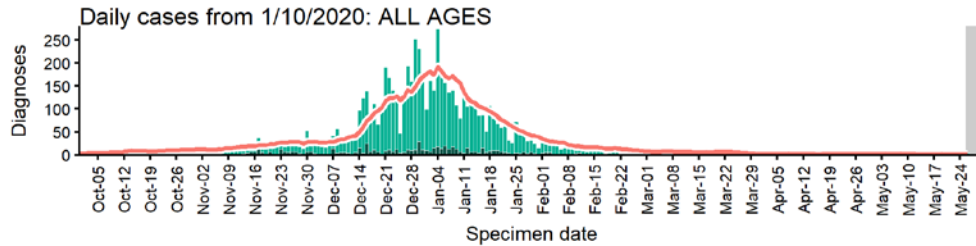


The red dashed line on the heatmaps show the last four days where data may be incomplete due to reporting delays and removal of LFDs with accompanying negative PCR results. Please consider this data provisional.

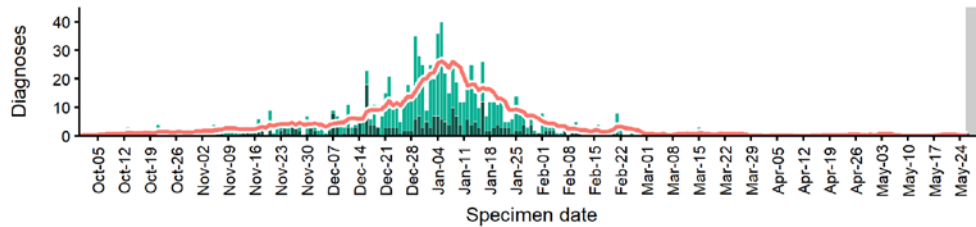
Data from SGSS. Produced by Outbreak Surveillance Team, PHE

Harlow case numbers, testing numbers and positivity, 1 Oct to 29 May 2021

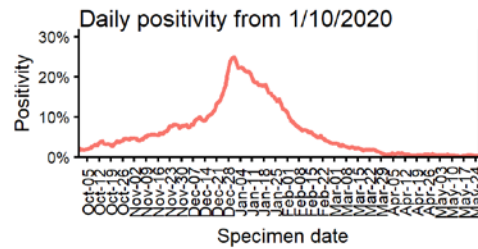
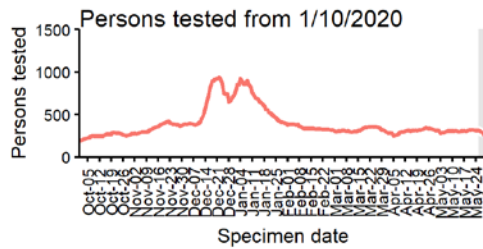
HARLOW
Cases and persons tested up to May 29 2021



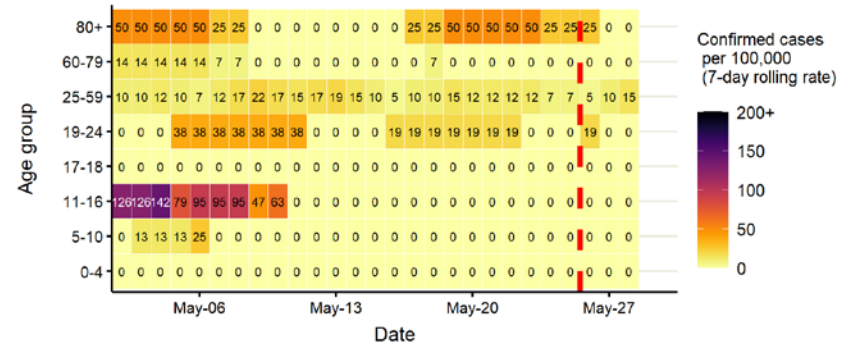
Daily cases from 1/10/2020: 60+ YEARS ONLY **NOTE: different y-axis scale**



4 days with incomplete data
 Pillar 1
 Pillar 2
 Total 7 day moving average (P1 + P2)



Age-stratified case rate heatmap for Harlow: 2 May to 29 May 2021

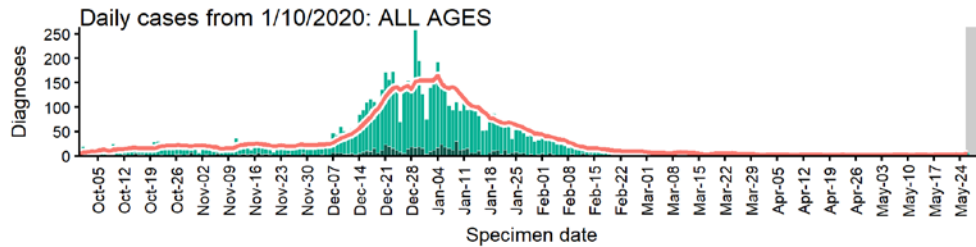


The red dashed line on the heatmaps show the last four days where data may be incomplete due to reporting delays and removal of LFDs with accompanying negative PCR results. Please consider this data provisional.

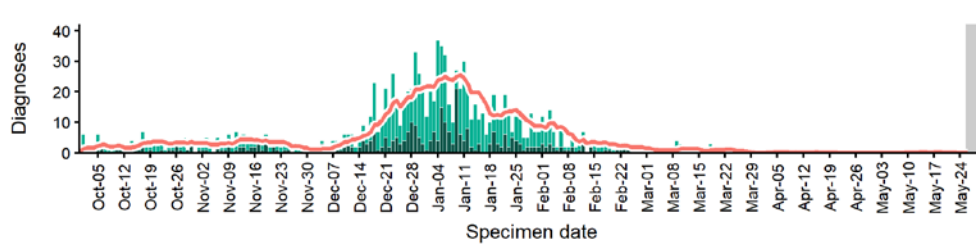
Data from SGSS. Produced by Outbreak Surveillance Team, PHE

Hertsmere case numbers, testing numbers and positivity, 1 Oct to 29 May 2021

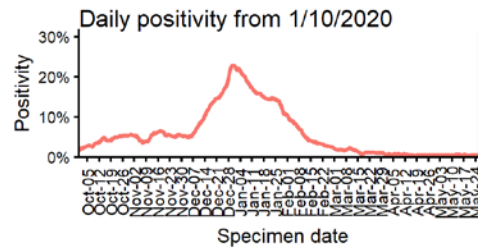
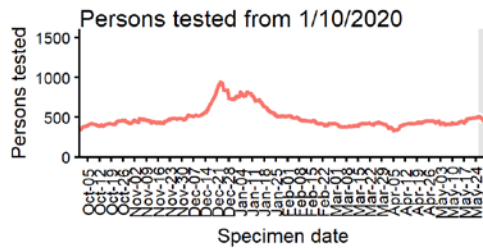
HERTSMERE
Cases and persons tested up to May 29 2021



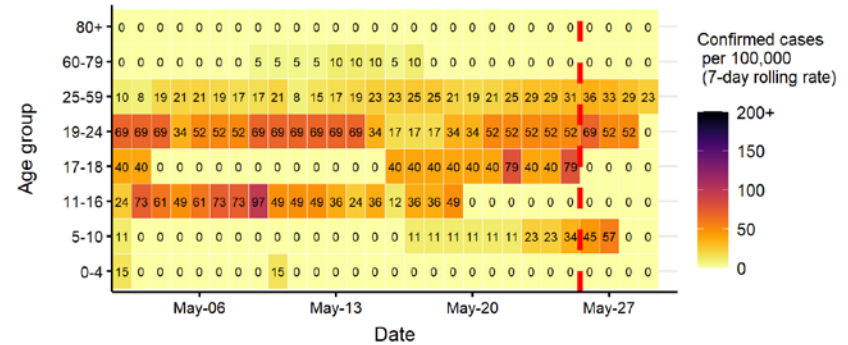
Daily cases from 1/10/2020: 60+ YEARS ONLY **NOTE: different y-axis scale**



4 days with incomplete data
 Pillar 1
 Pillar 2
 Total 7 day moving average (P1 + P2)



Age-stratified case rate heatmap for Hertsmere: 2 May to 29 May 2021

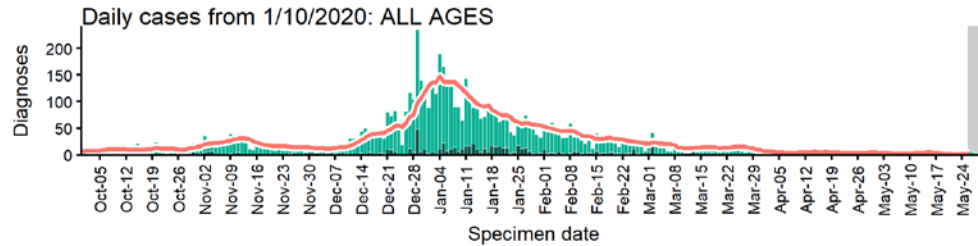


The red dashed line on the heatmaps show the last four days where data may be incomplete due to reporting delays and removal of LFDs with accompanying negative PCR results. Please consider this data provisional.

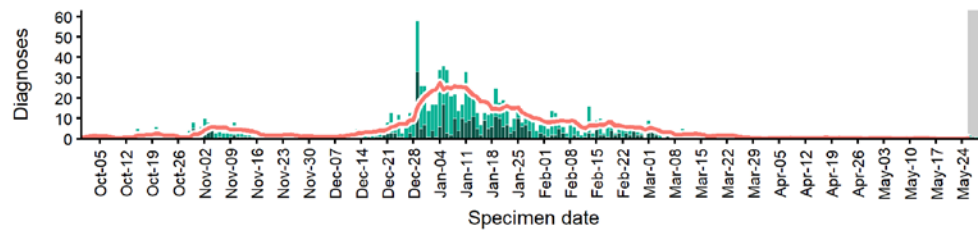
Data from SGSS. Produced by Outbreak Surveillance Team, PHE

Huntingdonshire case numbers, testing numbers and positivity, 1 Oct to 29 May 2021

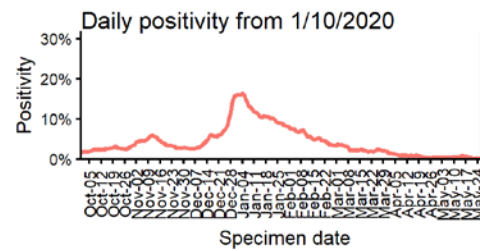
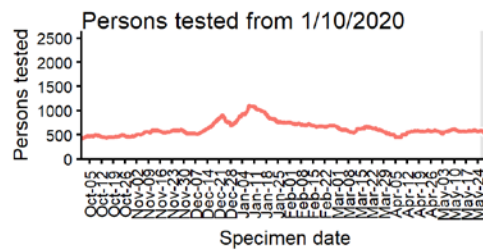
HUNTINGDONSHIRE Cases and persons tested up to May 29 2021



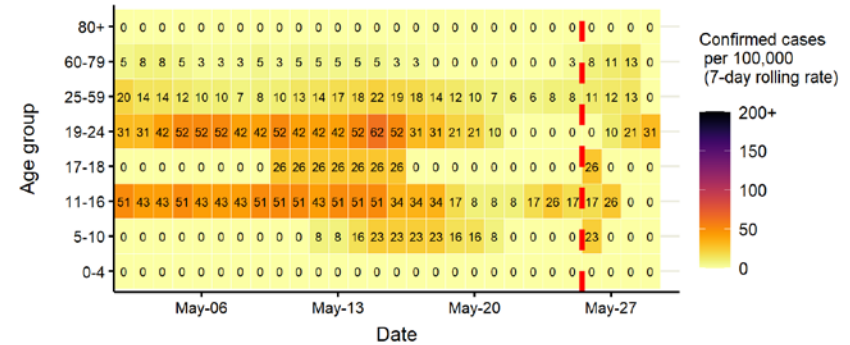
Daily cases from 1/10/2020: 60+ YEARS ONLY **NOTE: different y-axis scale**



4 days with incomplete data
 Pillar 1
 Pillar 2
 Total 7 day moving average (P1 + P2)



Age-stratified case rate heatmap for Huntingdonshire: 2 May to 29 May 2021

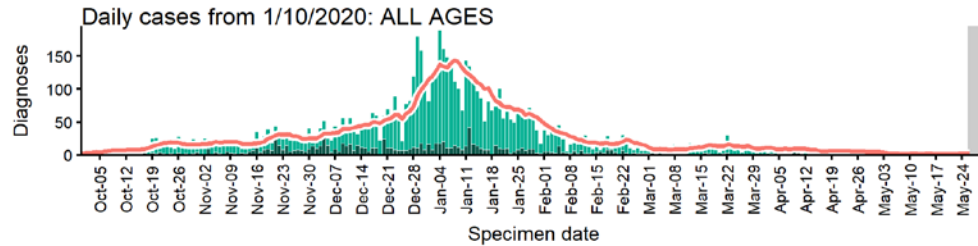


The red dashed line on the heatmaps show the last four days where data may be incomplete due to reporting delays and removal of LFDs with accompanying negative PCR results. Please consider this data provisional.

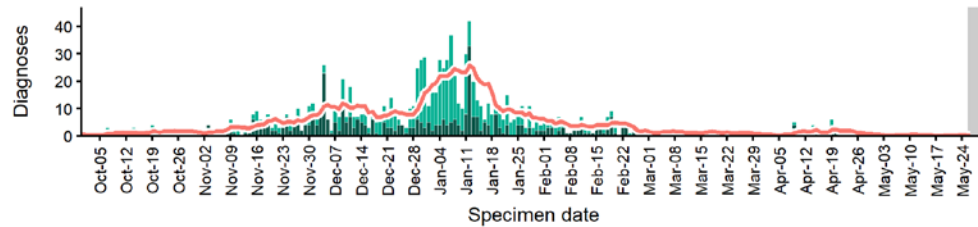
Data from SGSS. Produced by Outbreak Surveillance Team, PHE

Ipswich case numbers, testing numbers and positivity, 1 Oct to 29 May 2021

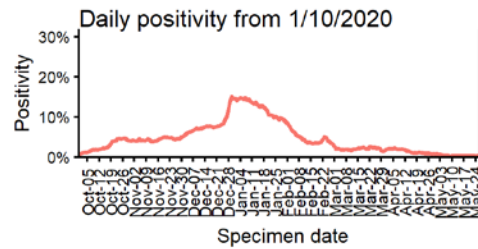
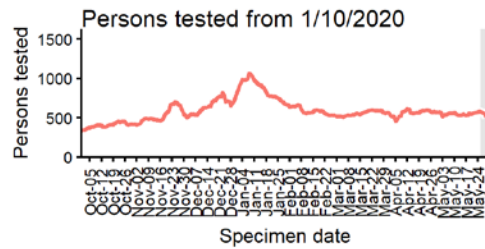
IPSWICH
Cases and persons tested up to May 29 2021



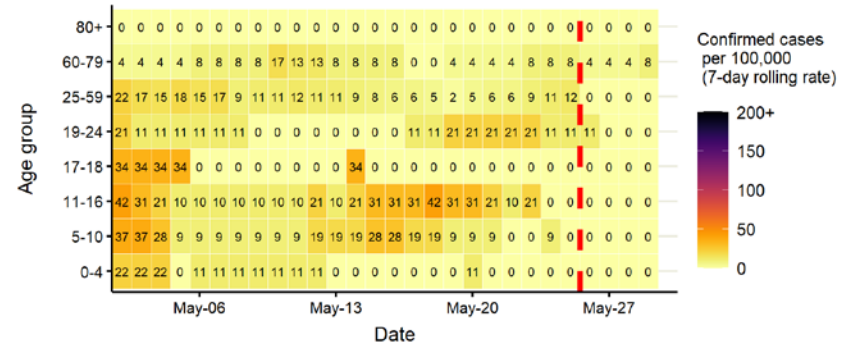
Daily cases from 1/10/2020: 60+ YEARS ONLY **NOTE: different y-axis scale**



4 days with incomplete data
 Pillar 1
 Pillar 2
 Total 7 day moving average (P1 + P2)



Age-stratified case rate heatmap for Ipswich: 2 May to 29 May 2021

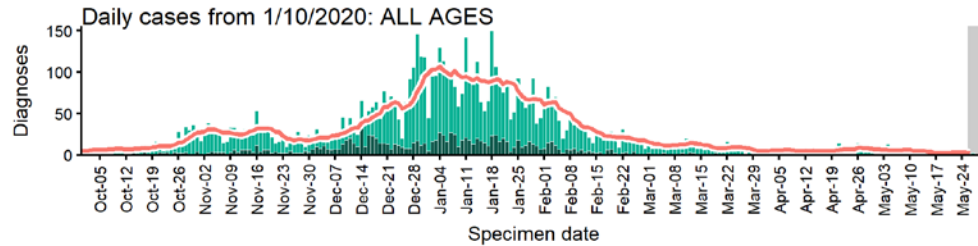


The red dashed line on the heatmaps show the last four days where data may be incomplete due to reporting delays and removal of LFDs with accompanying negative PCR results. Please consider this data provisional.

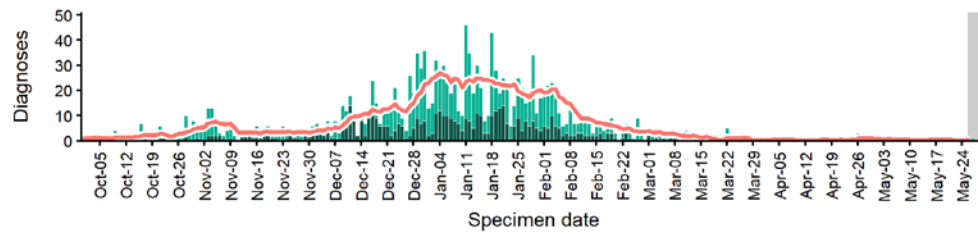
Data from SGSS. Produced by Outbreak Surveillance Team, PHE

King's Lynn and West Norfolk case numbers, testing numbers and positivity, 1 Oct to 29 May 2021

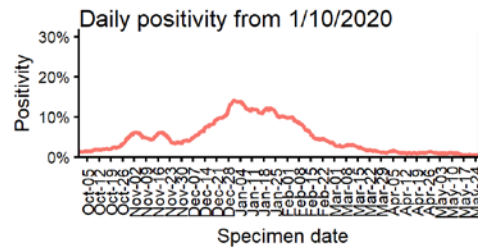
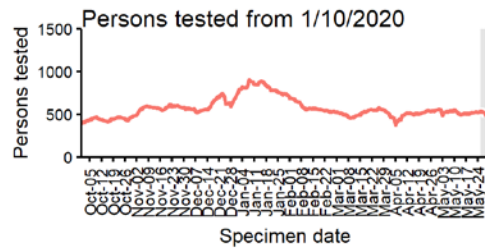
KING'S LYNN AND WEST NORFOLK
Cases and persons tested up to May 29 2021



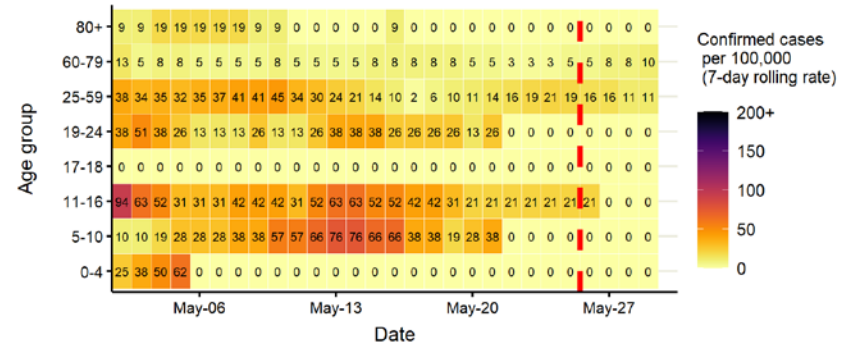
Daily cases from 1/10/2020: 60+ YEARS ONLY **NOTE: different y-axis scale**



4 days with incomplete data
 Pillar 1
 Pillar 2
 Total 7 day moving average (P1 + P2)



Age-stratified case rate heatmap for King's Lynn and West Norfolk: 2 May to 29 May 2021

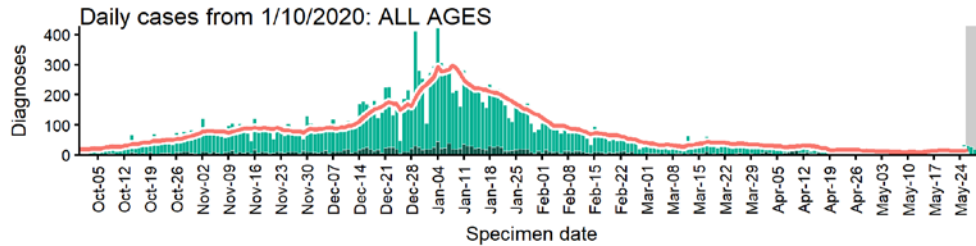


The red dashed line on the heatmaps show the last four days where data may be incomplete due to reporting delays and removal of LFDs with accompanying negative PCR results. Please consider this data provisional.

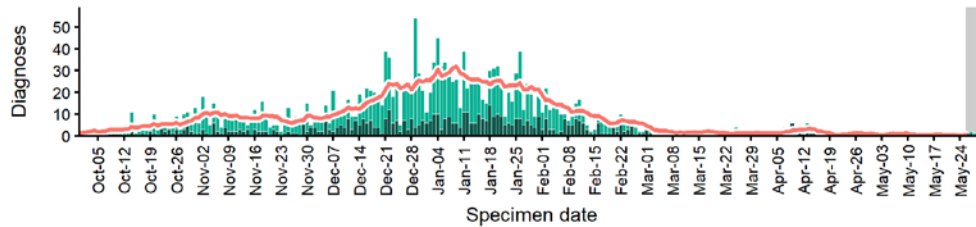
Data from SGSS. Produced by Outbreak Surveillance Team, PHE

Luton case numbers, testing numbers and positivity, 1 Oct to 29 May 2021

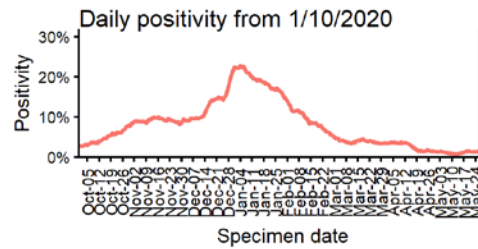
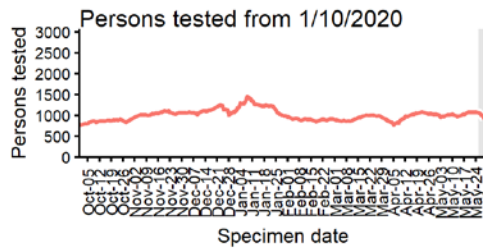
LUTON
Cases and persons tested up to May 29 2021



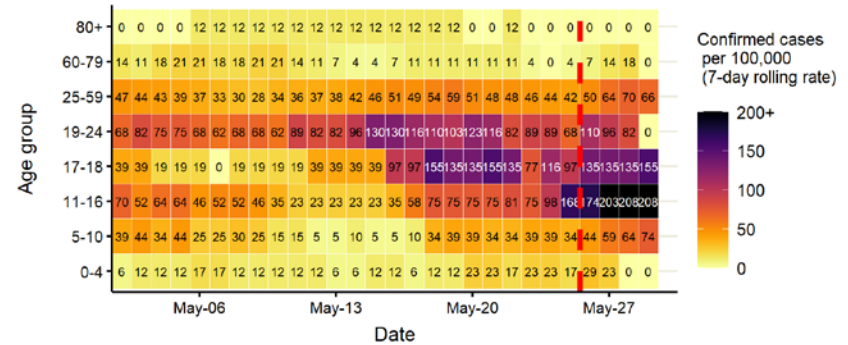
Daily cases from 1/10/2020: 60+ YEARS ONLY **NOTE: different y-axis scale**



4 days with incomplete data
 Pillar 1
 Pillar 2
 Total 7 day moving average (P1 + P2)



Age-stratified case rate heatmap for Luton: 2 May to 29 May 2021

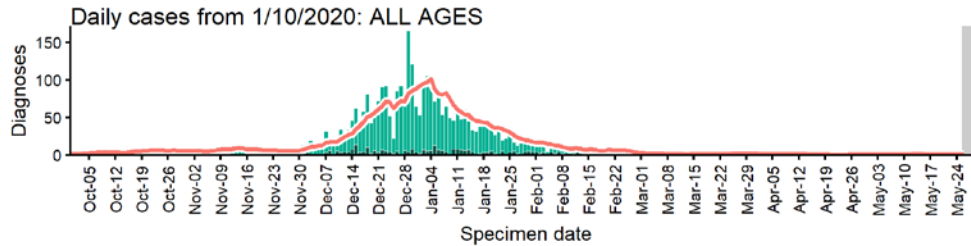


The red dashed line on the heatmaps show the last four days where data may be incomplete due to reporting delays and removal of LFDs with accompanying negative PCR results. Please consider this data provisional.

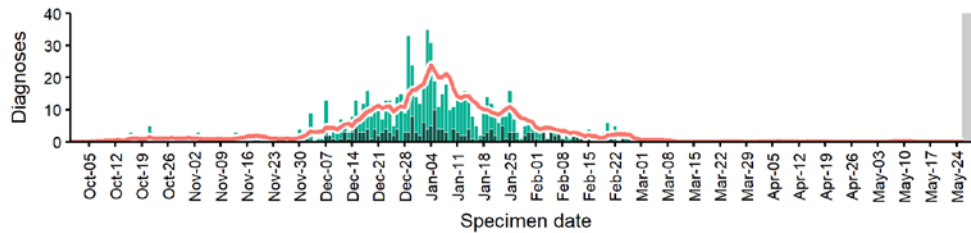
Data from SGSS. Produced by Outbreak Surveillance Team, PHE

Maldon case numbers, testing numbers and positivity, 1 Oct to 29 May 2021

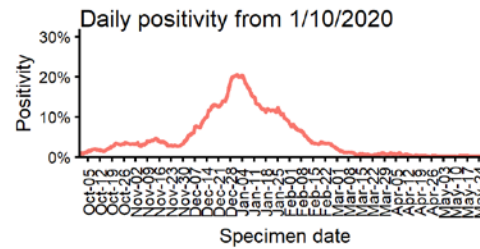
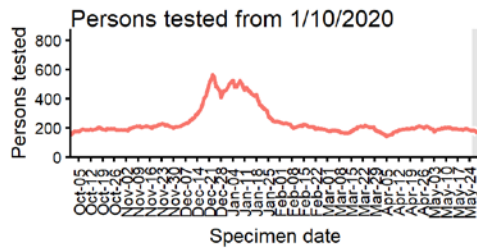
MALDON Cases and persons tested up to May 29 2021



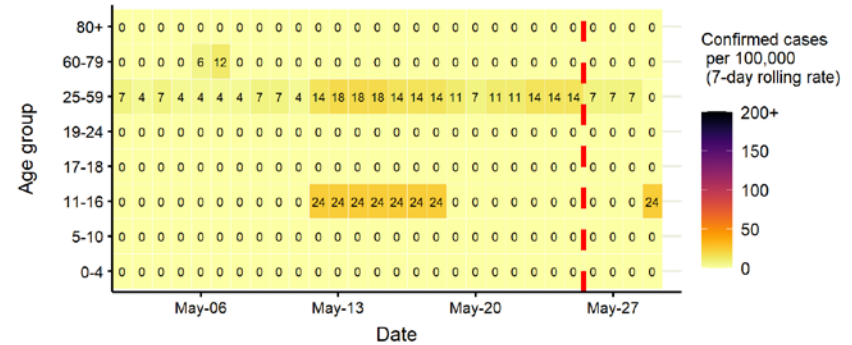
Daily cases from 1/10/2020: 60+ YEARS ONLY NOTE: different y-axis scale



4 days with incomplete data Pillar 1 Pillar 2 Total 7 day moving average (P1 + P2)



Age-stratified case rate heatmap for Maldon: 2 May to 29 May 2021

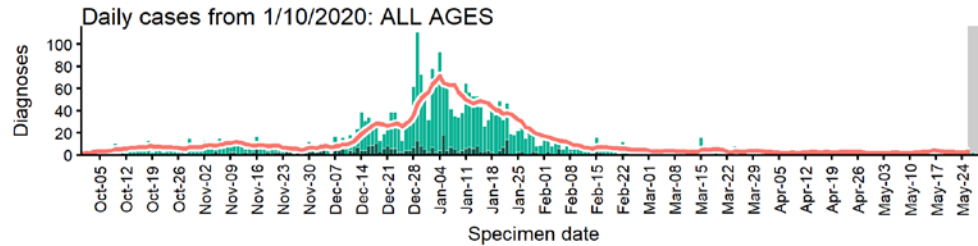


The red dashed line on the heatmaps show the last four days where data may be incomplete due to reporting delays and removal of LFDs with accompanying negative PCR results. Please consider this data provisional.

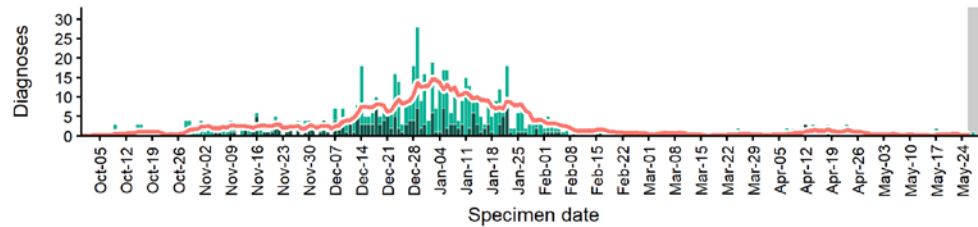
Data from SGSS. Produced by Outbreak Surveillance Team, PHE

Mid Suffolk case numbers, testing numbers and positivity, 1 Oct to 29 May 2021

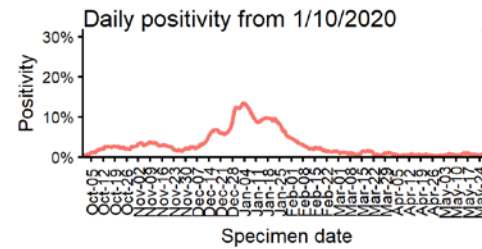
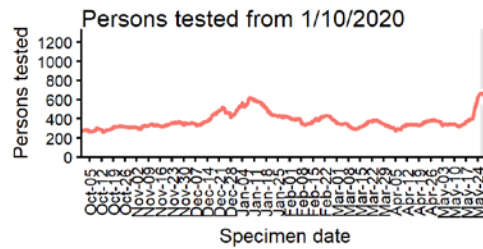
MID SUFFOLK Cases and persons tested up to May 29 2021



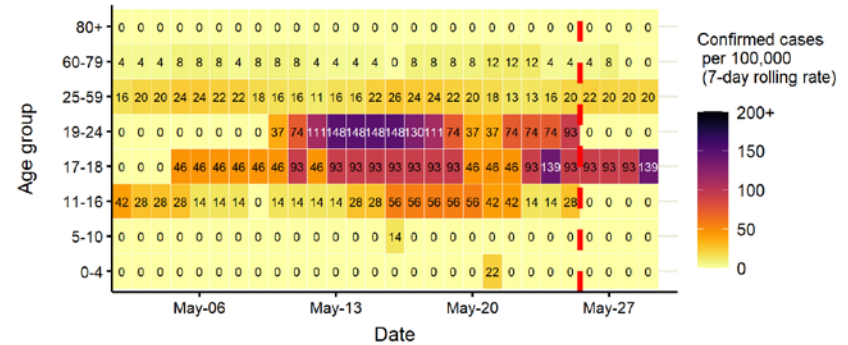
Daily cases from 1/10/2020: 60+ YEARS ONLY **NOTE: different y-axis scale**



4 days with incomplete data Pillar 1 Pillar 2 Total 7 day moving average (P1 + P2)



Age-stratified case rate heatmap for Mid Suffolk: 2 May to 29 May 2021

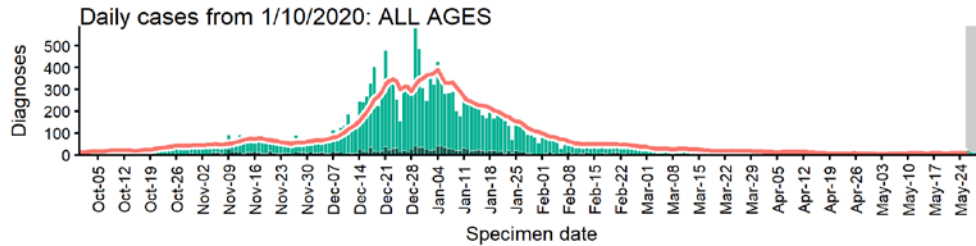


The red dashed line on the heatmaps show the last four days where data may be incomplete due to reporting delays and removal of LFDs with accompanying negative PCR results. Please consider this data provisional.

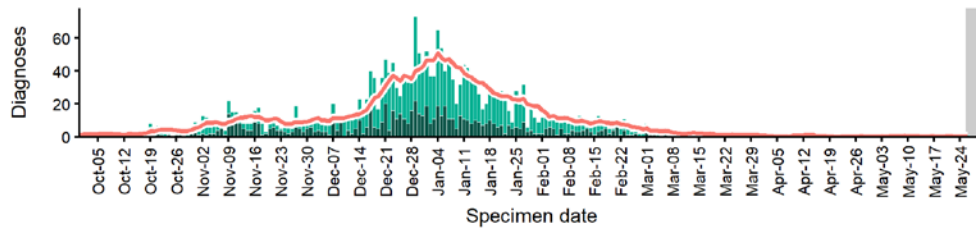
Data from SGSS. Produced by Outbreak Surveillance Team, PHE

Milton Keynes case numbers, testing numbers and positivity, 1 Oct to 29 May 2021

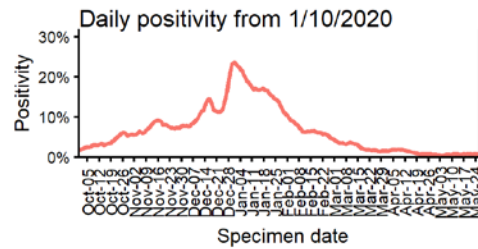
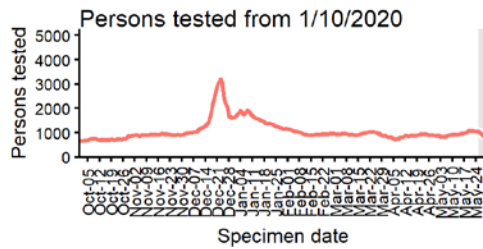
MILTON KEYNES Cases and persons tested up to May 29 2021



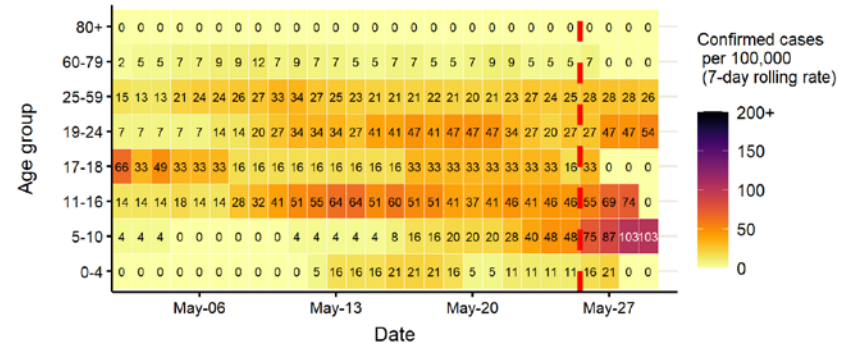
Daily cases from 1/10/2020: 60+ YEARS ONLY **NOTE: different y-axis scale**



4 days with incomplete data
 Pillar 1
 Pillar 2
 Total 7 day moving average (P1 + P2)



Age-stratified case rate heatmap for Milton Keynes: 2 May to 29 May 2021

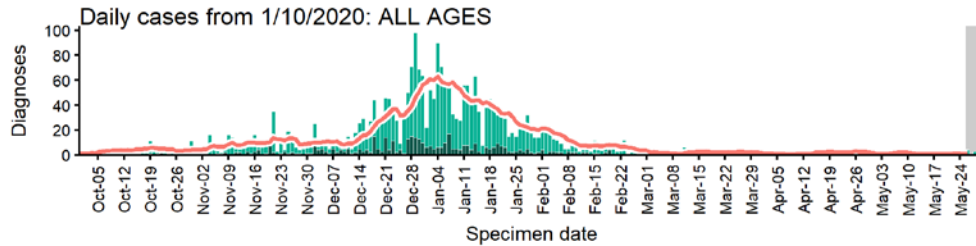


The red dashed line on the heatmaps show the last four days where data may be incomplete due to reporting delays and removal of LFDs with accompanying negative PCR results. Please consider this data provisional.

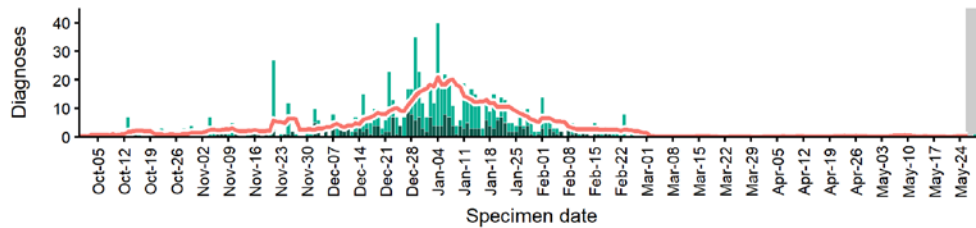
Data from SGSS. Produced by Outbreak Surveillance Team, PHE

North Norfolk case numbers, testing numbers and positivity, 1 Oct to 29 May 2021

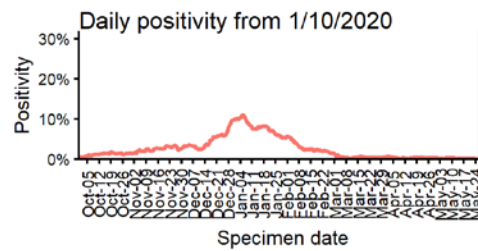
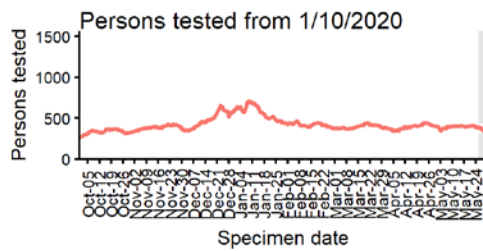
NORTH NORFOLK
Cases and persons tested up to May 29 2021



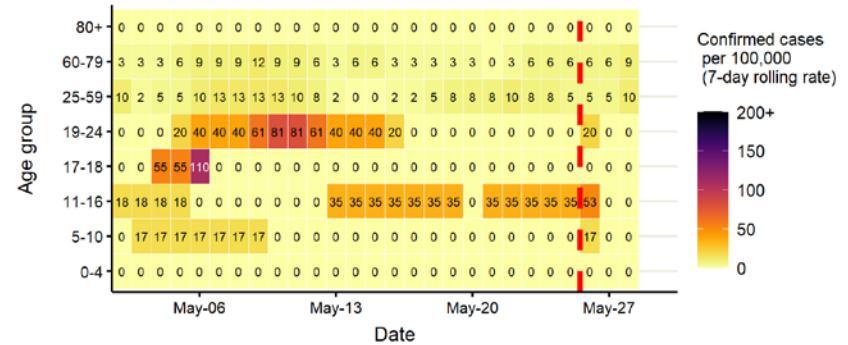
Daily cases from 1/10/2020: 60+ YEARS ONLY **NOTE: different y-axis scale**



4 days with incomplete data Pillar 1 Pillar 2 Total 7 day moving average (P1 + P2)



Age-stratified case rate heatmap for North Norfolk: 2 May to 29 May 2021

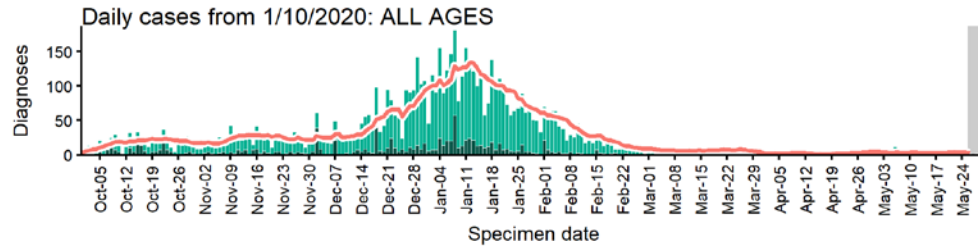


The red dashed line on the heatmaps show the last four days where data may be incomplete due to reporting delays and removal of LFDs with accompanying negative PCR results. Please consider this data provisional.

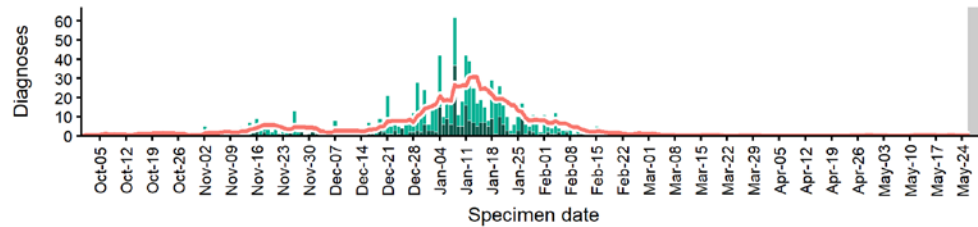
Data from SGSS. Produced by Outbreak Surveillance Team, PHE

Norwich case numbers, testing numbers and positivity, 1 Oct to 29 May 2021

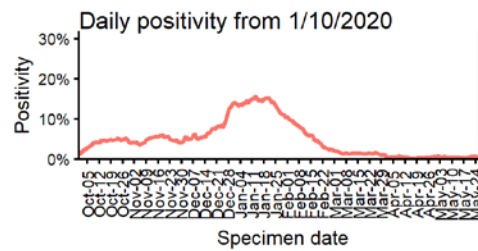
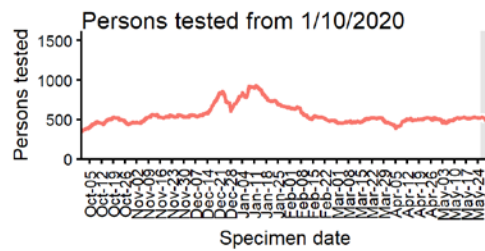
NORWICH Cases and persons tested up to May 29 2021



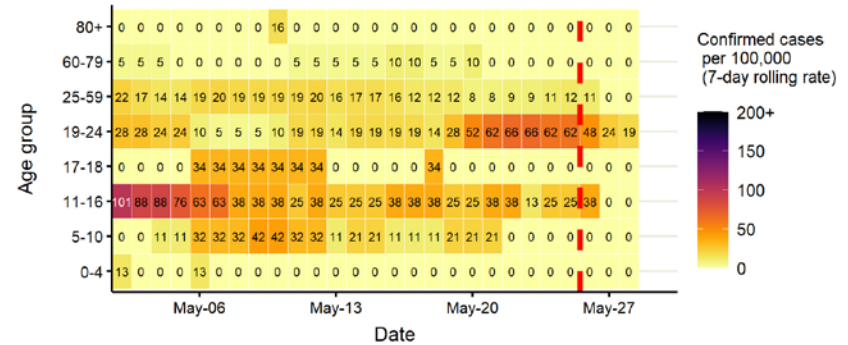
Daily cases from 1/10/2020: 60+ YEARS ONLY **NOTE: different y-axis scale**



4 days with incomplete data
 Pillar 1
 Pillar 2
 Total 7 day moving average (P1 + P2)



Age-stratified case rate heatmap for Norwich: 2 May to 29 May 2021

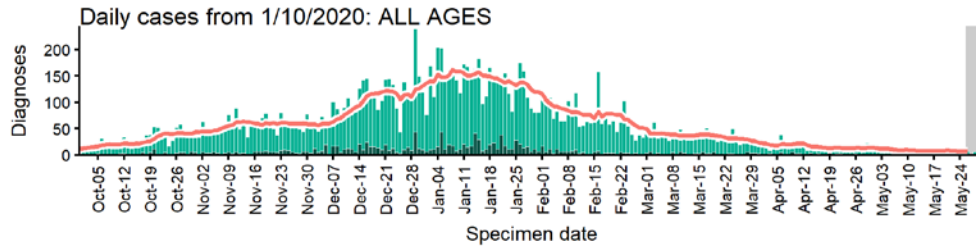


The red dashed line on the heatmaps show the last four days where data may be incomplete due to reporting delays and removal of LFDs with accompanying negative PCR results. Please consider this data provisional.

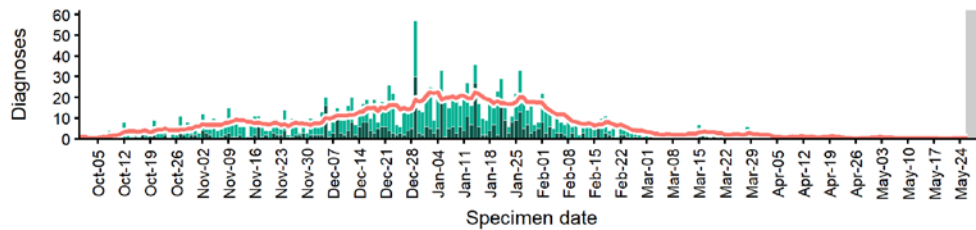
Data from SGSS. Produced by Outbreak Surveillance Team, PHE

Peterborough case numbers, testing numbers and positivity, 1 Oct to 29 May 2021

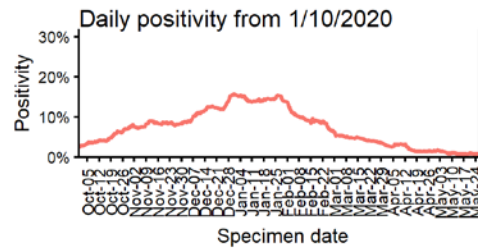
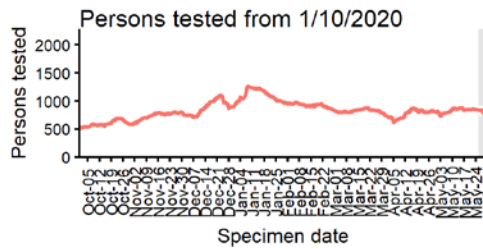
PETERBOROUGH
Cases and persons tested up to May 29 2021



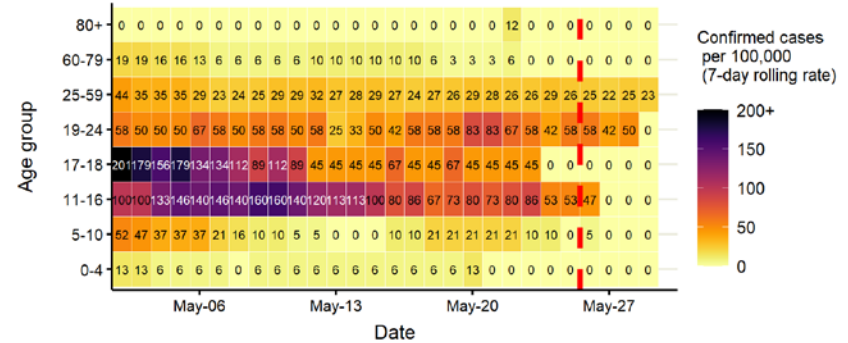
Daily cases from 1/10/2020: 60+ YEARS ONLY **NOTE: different y-axis scale**



4 days with incomplete data Pillar 1 Pillar 2 Total 7 day moving average (P1 + P2)



Age-stratified case rate heatmap for Peterborough: 2 May to 29 May 2021

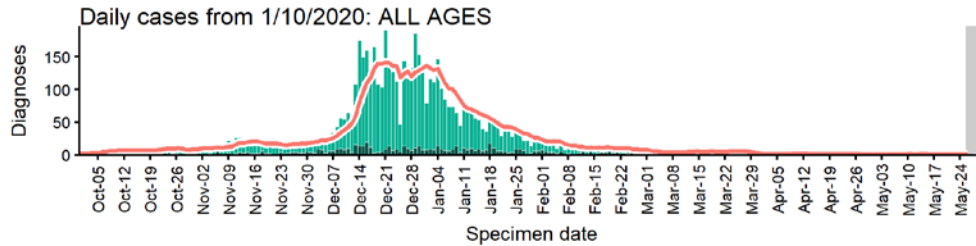


The red dashed line on the heatmaps show the last four days where data may be incomplete due to reporting delays and removal of LFDs with accompanying negative PCR results. Please consider this data provisional.

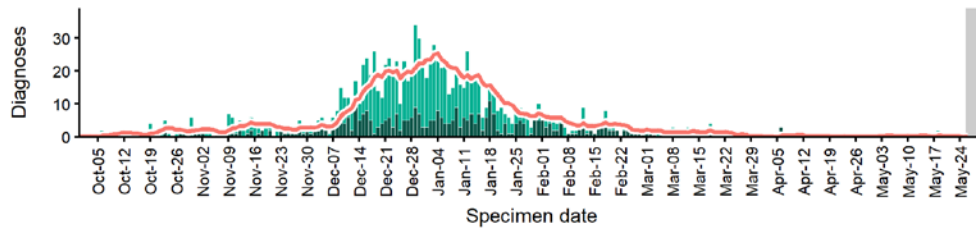
Data from SGSS. Produced by Outbreak Surveillance Team, PHE

Rochford case numbers, testing numbers and positivity, 1 Oct to 29 May 2021

ROCHFORD
Cases and persons tested up to May 29 2021

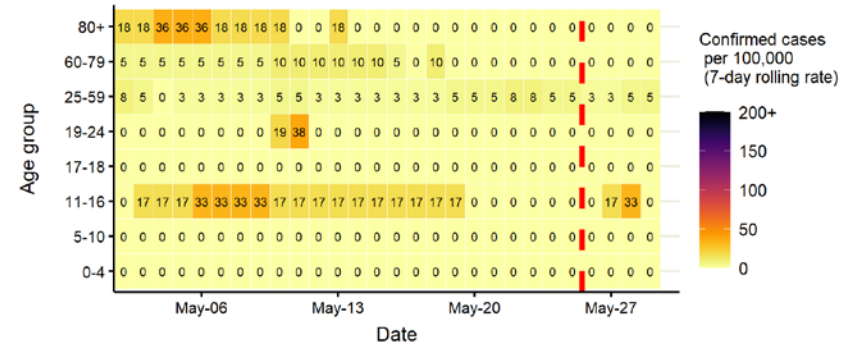


Daily cases from 1/10/2020: 60+ YEARS ONLY **NOTE: different y-axis scale**

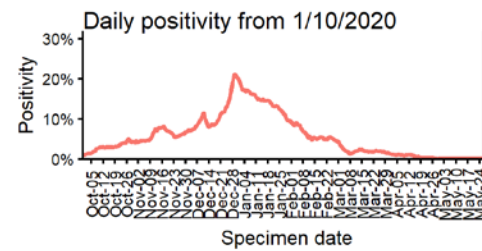
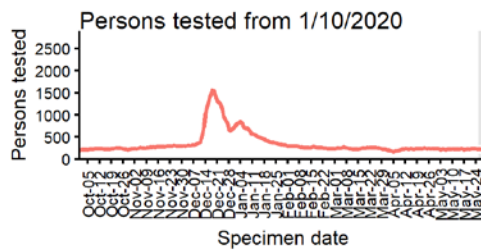


4 days with incomplete data Pillar 1 Pillar 2 Total 7 day moving average (P1 + P2)

Age-stratified case rate heatmap for Rochford: 2 May to 29 May 2021



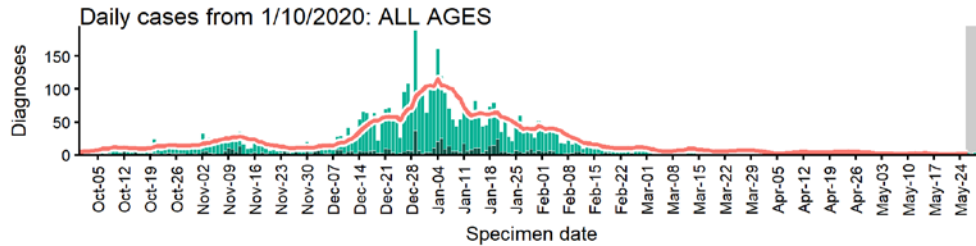
The red dashed line on the heatmaps show the last four days where data may be incomplete due to reporting delays and removal of LFDs with accompanying negative PCR results. Please consider this data provisional.



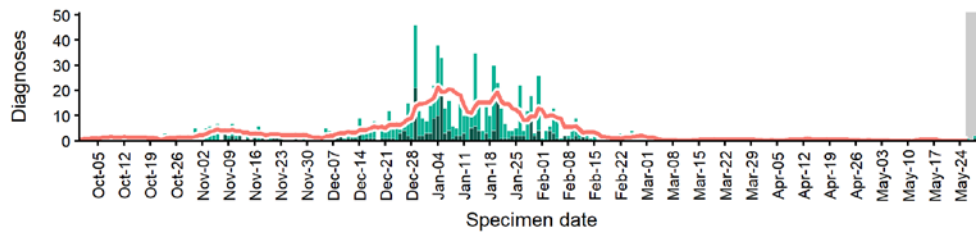
Data from SGSS. Produced by Outbreak Surveillance Team, PHE

South Cambridgeshire case numbers, testing numbers and positivity, 1 Oct to 29 May 2021

**SOUTH CAMBRIDGESHIRE
Cases and persons tested up to May 29 2021**

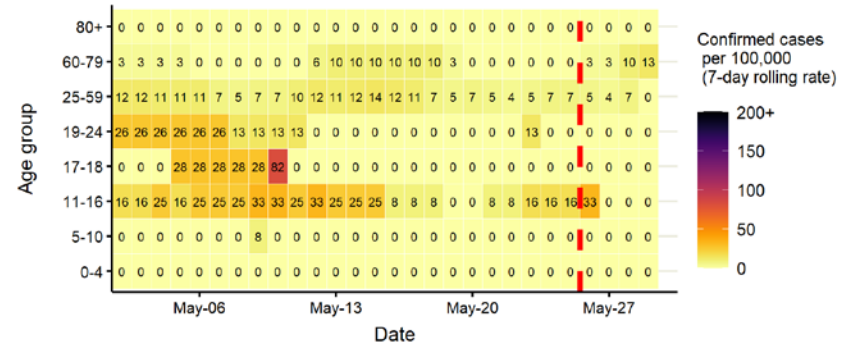


Daily cases from 1/10/2020: 60+ YEARS ONLY **NOTE: different y-axis scale**

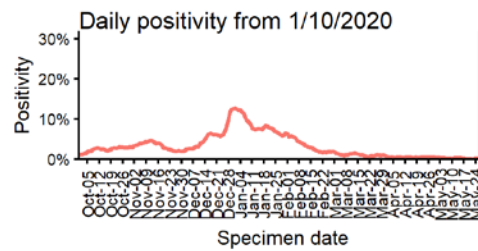
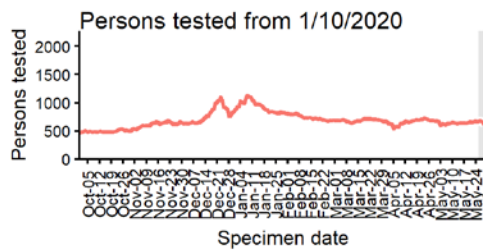


4 days with incomplete data Pillar 1 Pillar 2 Total 7 day moving average (P1 + P2)

Age-stratified case rate heatmap for South Cambridgeshire: 2 May to 29 May 2021



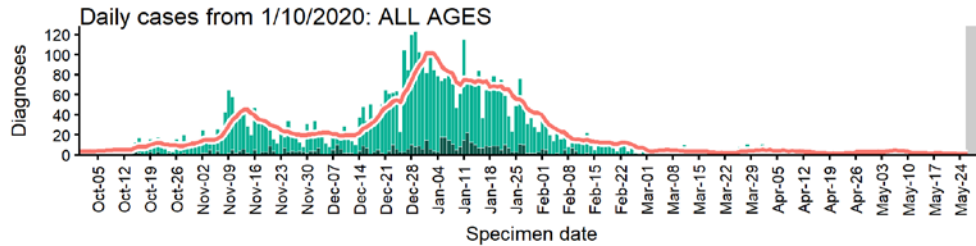
The red dashed line on the heatmaps show the last four days where data may be incomplete due to reporting delays and removal of LFDs with accompanying negative PCR results. Please consider this data provisional.



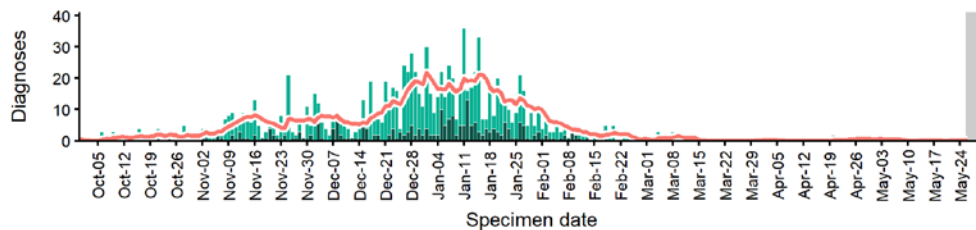
Data from SGSS. Produced by Outbreak Surveillance Team, PHE

South Norfolk case numbers, testing numbers and positivity, 1 Oct to 29 May 2021

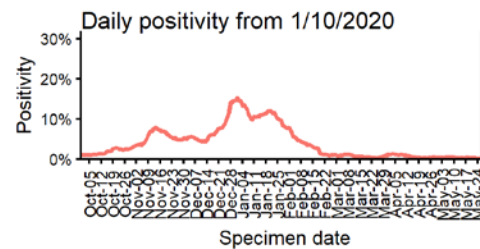
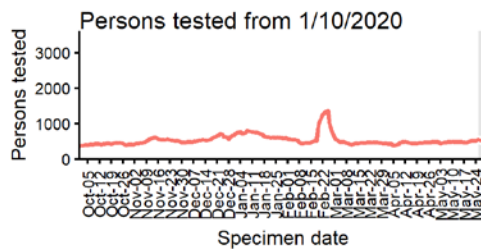
SOUTH NORFOLK
Cases and persons tested up to May 29 2021



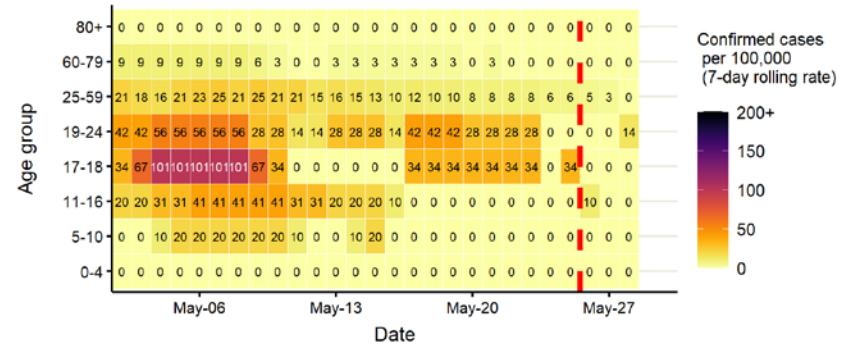
Daily cases from 1/10/2020: 60+ YEARS ONLY **NOTE: different y-axis scale**



4 days with incomplete data Pillar 1 Pillar 2 Total 7 day moving average (P1 + P2)



Age-stratified case rate heatmap for South Norfolk: 2 May to 29 May 2021

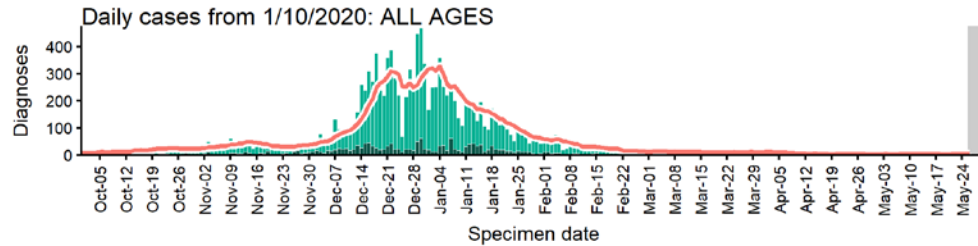


The red dashed line on the heatmaps show the last four days where data may be incomplete due to reporting delays and removal of LFDs with accompanying negative PCR results. Please consider this data provisional.

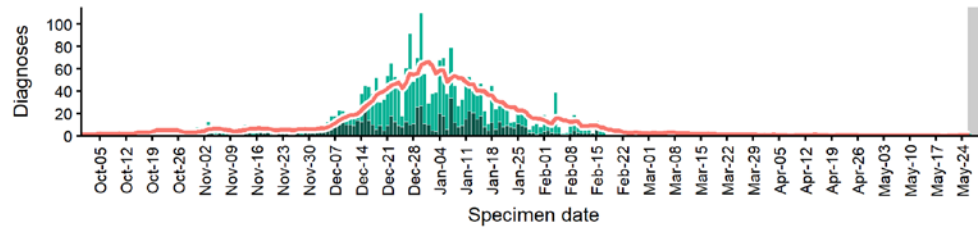
Data from SGSS. Produced by Outbreak Surveillance Team, PHE

Southend-on-Sea case numbers, testing numbers and positivity, 1 Oct to 29 May 2021

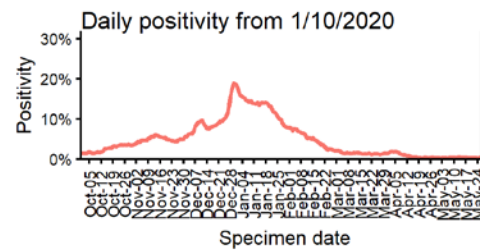
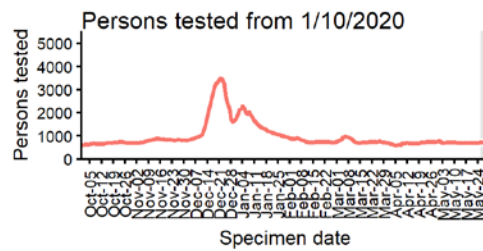
**SOUTHEND-ON-SEA
Cases and persons tested up to May 29 2021**



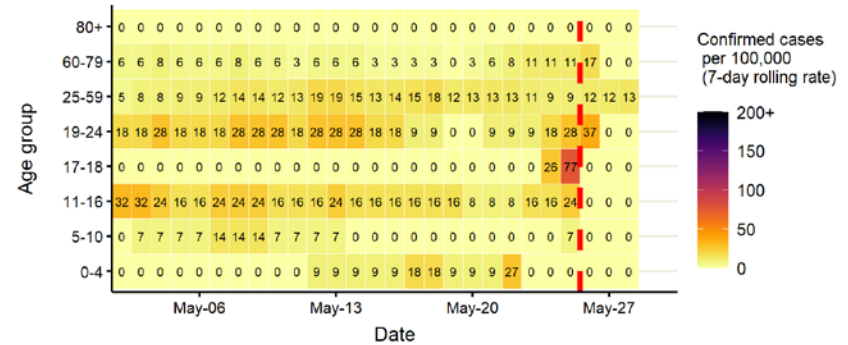
Daily cases from 1/10/2020: 60+ YEARS ONLY **NOTE: different y-axis scale**



4 days with incomplete data Pillar 1 Pillar 2 Total 7 day moving average (P1 + P2)



Age-stratified case rate heatmap for Southend-on-Sea: 2 May to 29 May 2021

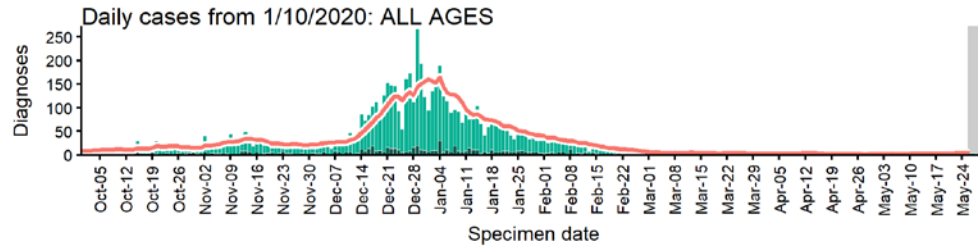


The red dashed line on the heatmaps show the last four days where data may be incomplete due to reporting delays and removal of LFDs with accompanying negative PCR results. Please consider this data provisional.

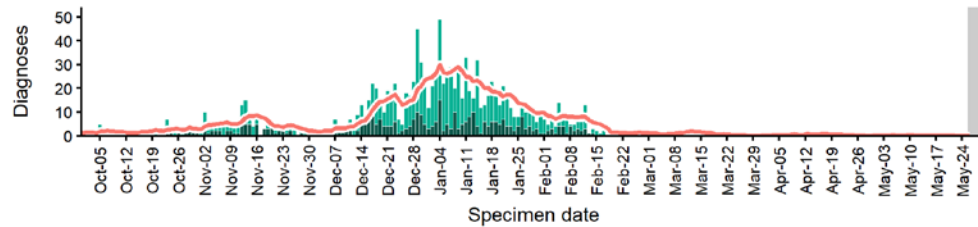
Data from SGSS. Produced by Outbreak Surveillance Team, PHE

St Albans case numbers, testing numbers and positivity, 1 Oct to 29 May 2021

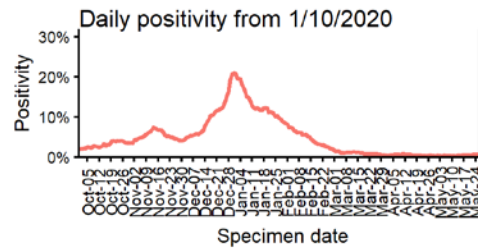
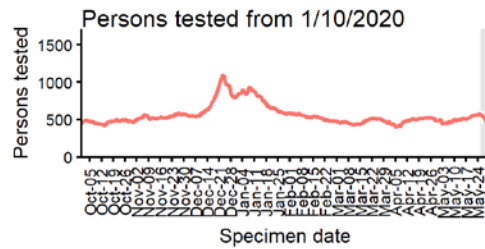
ST ALBANS
Cases and persons tested up to May 29 2021



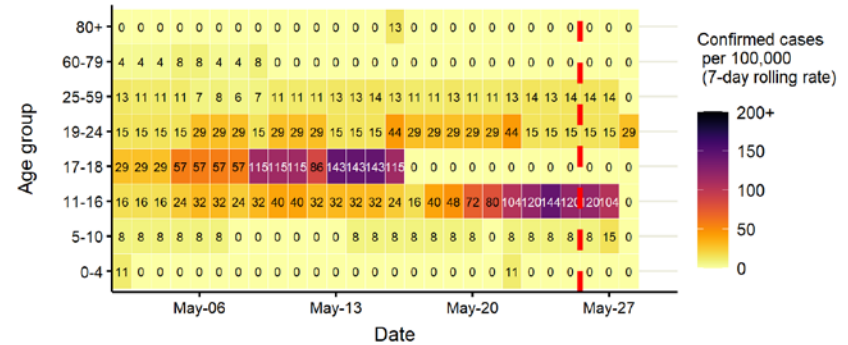
Daily cases from 1/10/2020: 60+ YEARS ONLY **NOTE: different y-axis scale**



4 days with incomplete data Pillar 1 Pillar 2 Total 7 day moving average (P1 + P2)



Age-stratified case rate heatmap for St Albans: 2 May to 29 May 2021

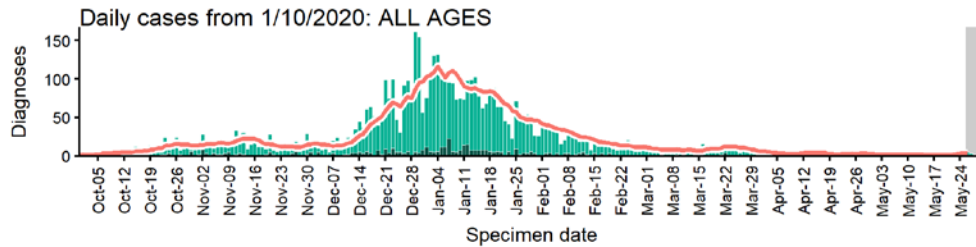


The red dashed line on the heatmaps show the last four days where data may be incomplete due to reporting delays and removal of LFDs with accompanying negative PCR results. Please consider this data provisional.

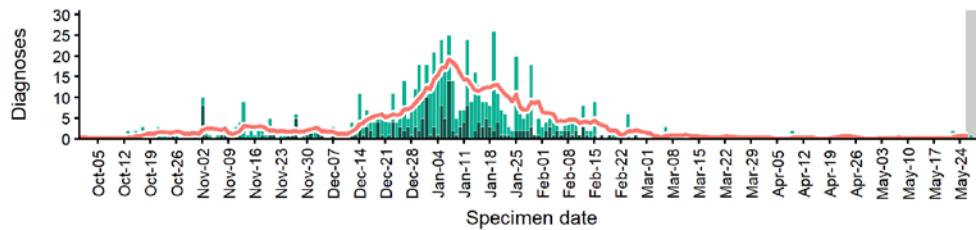
Data from SGSS. Produced by Outbreak Surveillance Team, PHE

Stevenage case numbers, testing numbers and positivity, 1 Oct to 29 May 2021

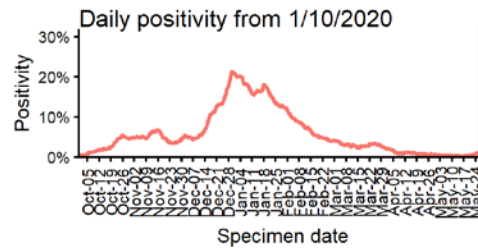
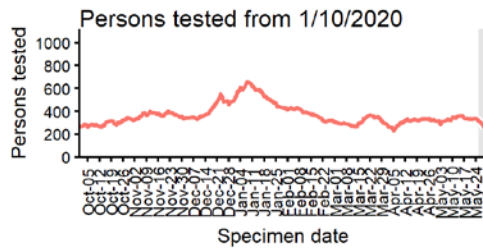
STEVENAGE
Cases and persons tested up to May 29 2021



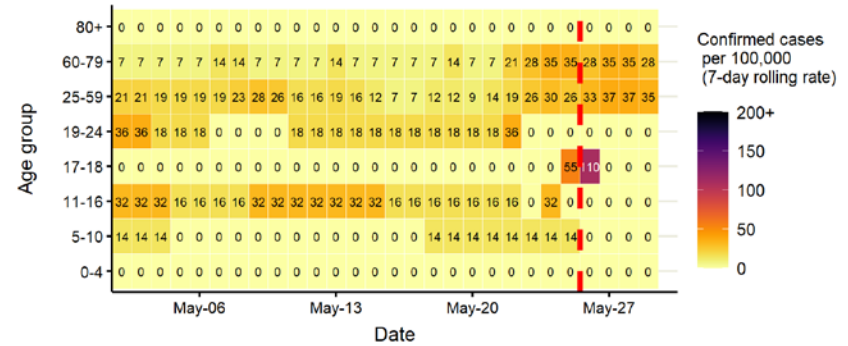
Daily cases from 1/10/2020: 60+ YEARS ONLY **NOTE: different y-axis scale**



4 days with incomplete data Pillar 1 Pillar 2 Total 7 day moving average (P1 + P2)



Age-stratified case rate heatmap for Stevenage: 2 May to 29 May 2021

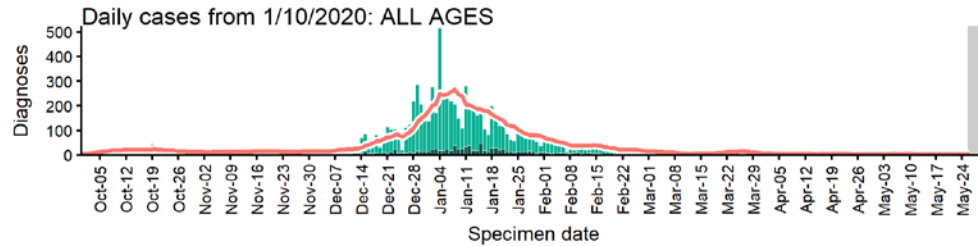


The red dashed line on the heatmaps show the last four days where data may be incomplete due to reporting delays and removal of LFDs with accompanying negative PCR results. Please consider this data provisional.

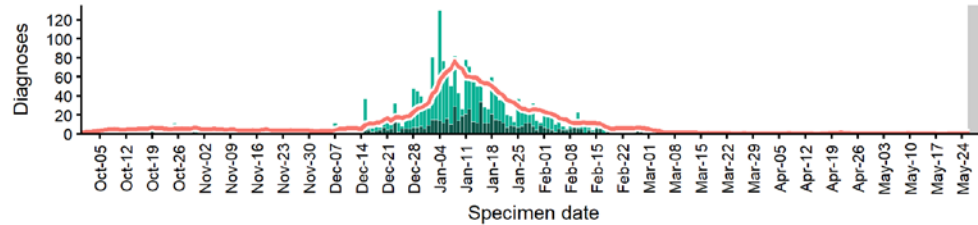
Data from SGSS. Produced by Outbreak Surveillance Team, PHE

Trending case numbers, testing numbers and positivity, 1 Oct to 29 May 2021

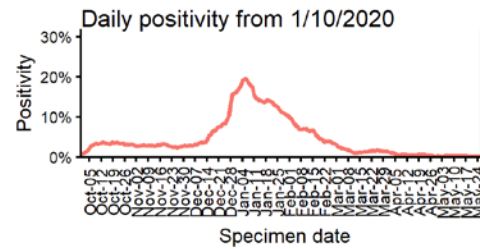
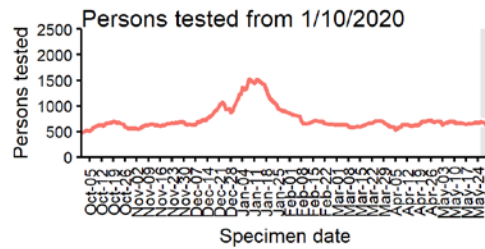
TENDRING Cases and persons tested up to May 29 2021



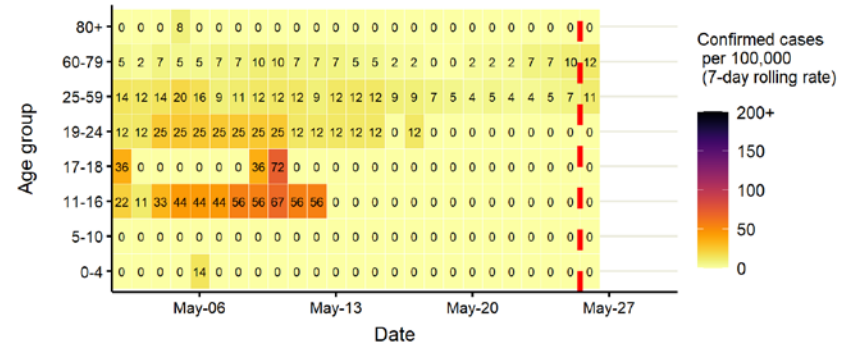
Daily cases from 1/10/2020: 60+ YEARS ONLY **NOTE: different y-axis scale**



4 days with incomplete data
 Pillar 1
 Pillar 2
 Total 7 day moving average (P1 + P2)



Age-stratified case rate heatmap for Tendring: 2 May to 29 May 2021

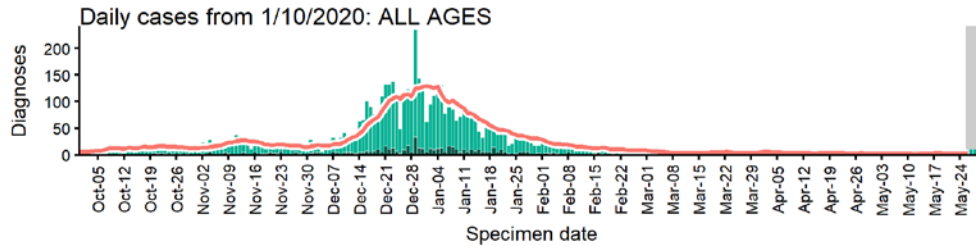


The red dashed line on the heatmaps show the last four days where data may be incomplete due to reporting delays and removal of LFDs with accompanying negative PCR results. Please consider this data provisional.

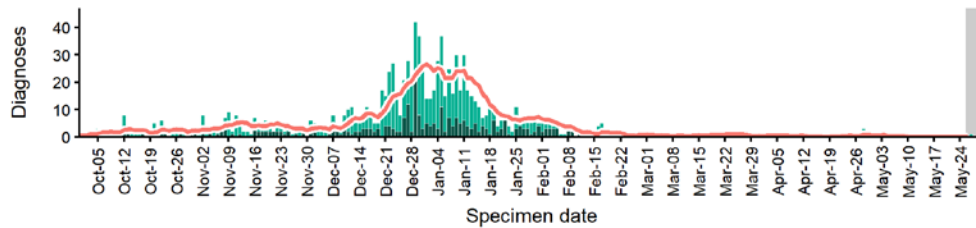
Data from SGSS. Produced by Outbreak Surveillance Team, PHE

Three Rivers case numbers, testing numbers and positivity, 1 Oct to 29 May 2021

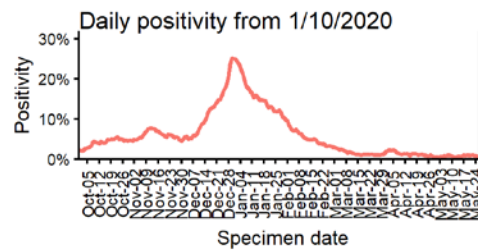
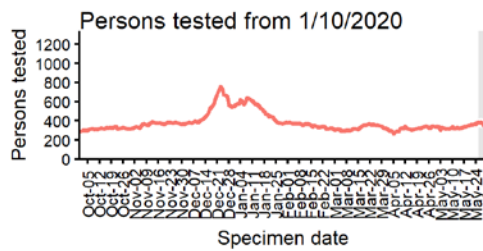
THREE RIVERS
Cases and persons tested up to May 29 2021



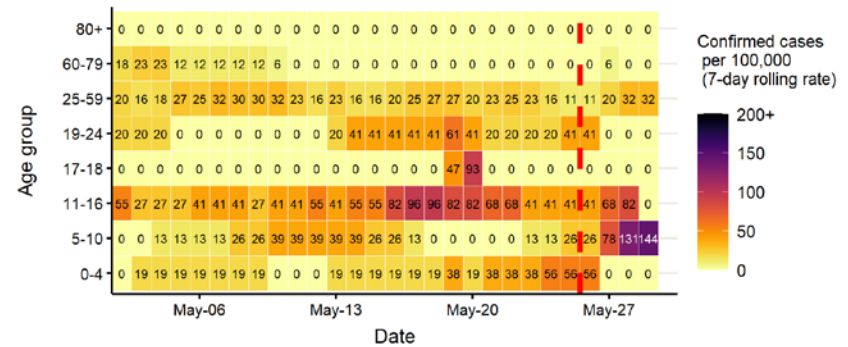
Daily cases from 1/10/2020: 60+ YEARS ONLY **NOTE: different y-axis scale**



4 days with incomplete data
 Pillar 1
 Pillar 2
 Total 7 day moving average (P1 + P2)



Age-stratified case rate heatmap for Three Rivers: 2 May to 29 May 2021

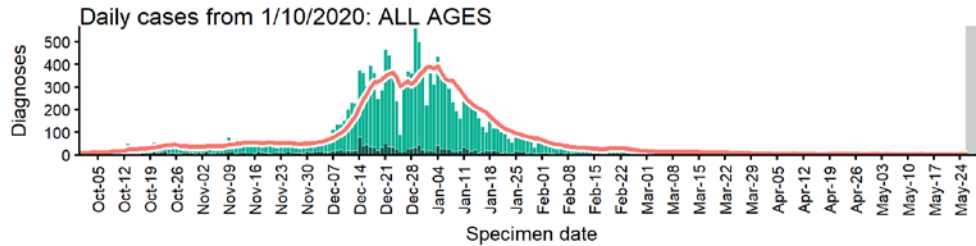


The red dashed line on the heatmaps show the last four days where data may be incomplete due to reporting delays and removal of LFDs with accompanying negative PCR results. Please consider this data provisional.

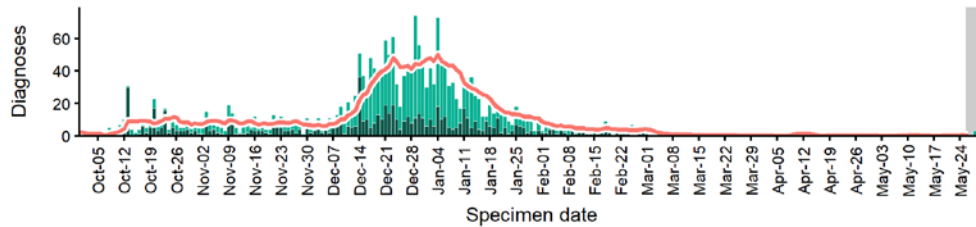
Data from SGSS. Produced by Outbreak Surveillance Team, PHE

Thurrock case numbers, testing numbers and positivity, 1 Oct to 29 May 2021

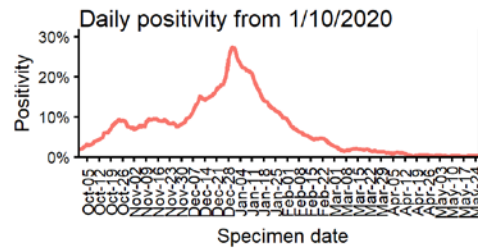
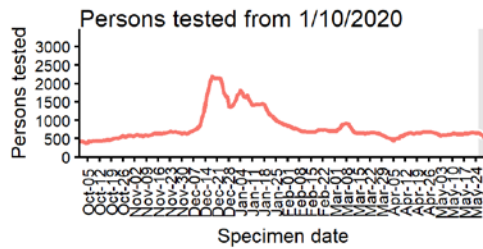
THURROCK Cases and persons tested up to May 29 2021



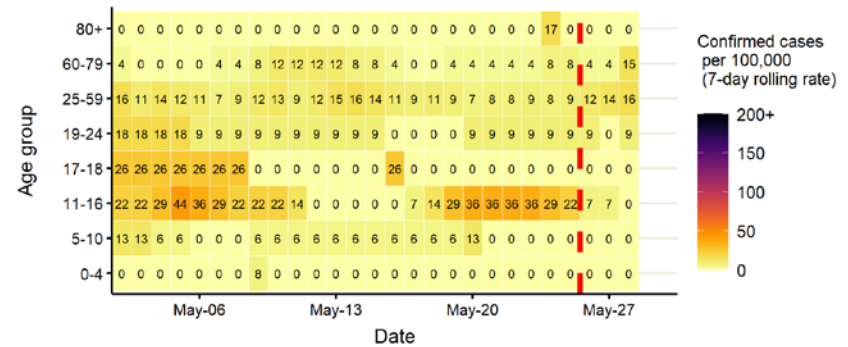
Daily cases from 1/10/2020: 60+ YEARS ONLY **NOTE: different y-axis scale**



4 days with incomplete data
 Pillar 1
 Pillar 2
 Total 7 day moving average (P1 + P2)



Age-stratified case rate heatmap for Thurrock: 2 May to 29 May 2021

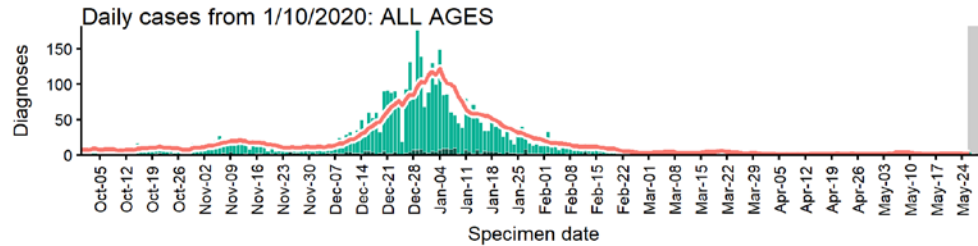


The red dashed line on the heatmaps show the last four days where data may be incomplete due to reporting delays and removal of LFDs with accompanying negative PCR results. Please consider this data provisional.

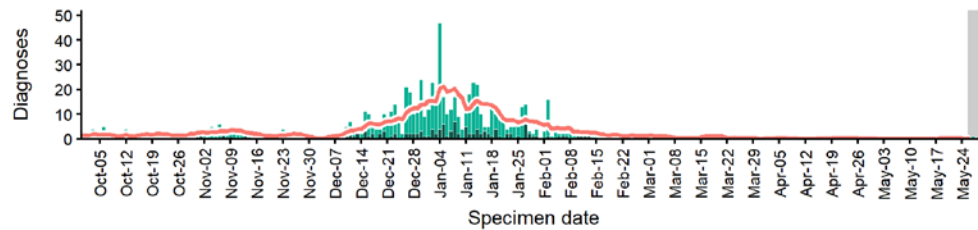
Data from SGSS. Produced by Outbreak Surveillance Team, PHE

Uttlesford case numbers, testing numbers and positivity, 1 Oct to 29 May 2021

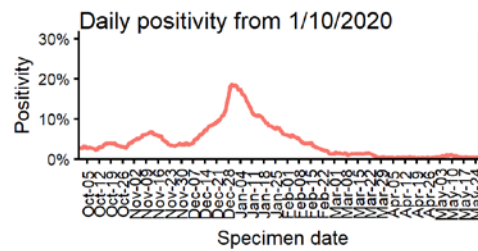
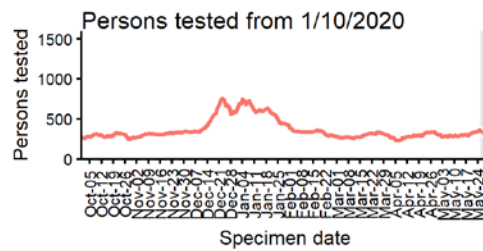
UTTLESFORD Cases and persons tested up to May 29 2021



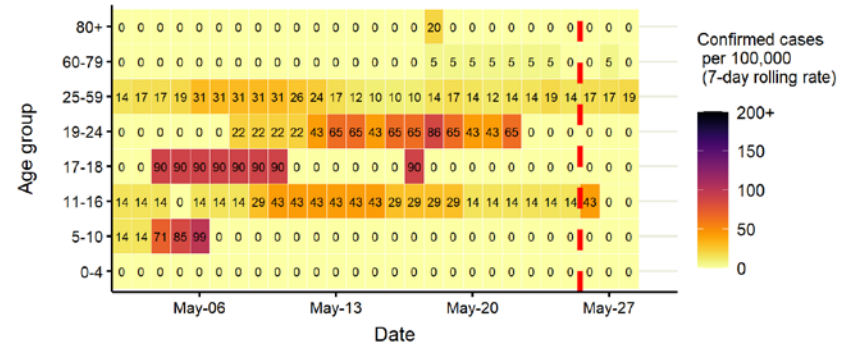
Daily cases from 1/10/2020: 60+ YEARS ONLY **NOTE: different y-axis scale**



4 days with incomplete data
 Pillar 1
 Pillar 2
 Total 7 day moving average (P1 + P2)



Age-stratified case rate heatmap for Uttlesford: 2 May to 29 May 2021

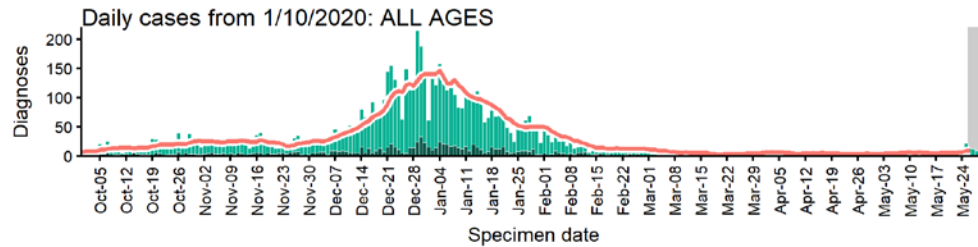


The red dashed line on the heatmaps show the last four days where data may be incomplete due to reporting delays and removal of LFDs with accompanying negative PCR results. Please consider this data provisional.

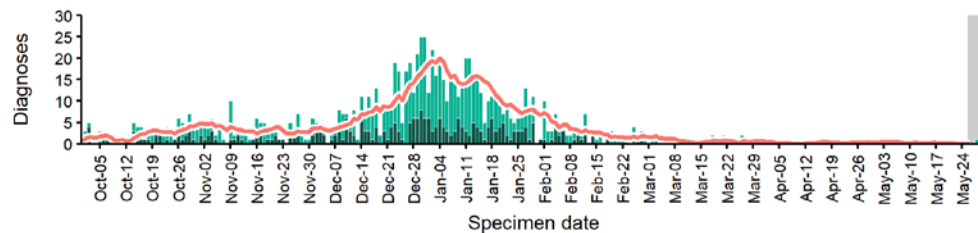
Data from SGSS. Produced by Outbreak Surveillance Team, PHE

Watford case numbers, testing numbers and positivity, 1 Oct to 29 May 2021

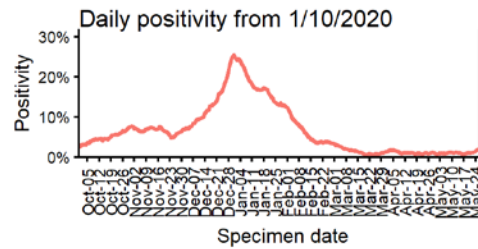
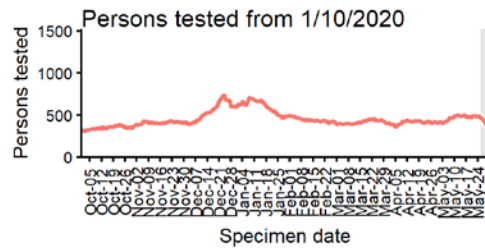
WATFORD
Cases and persons tested up to May 29 2021



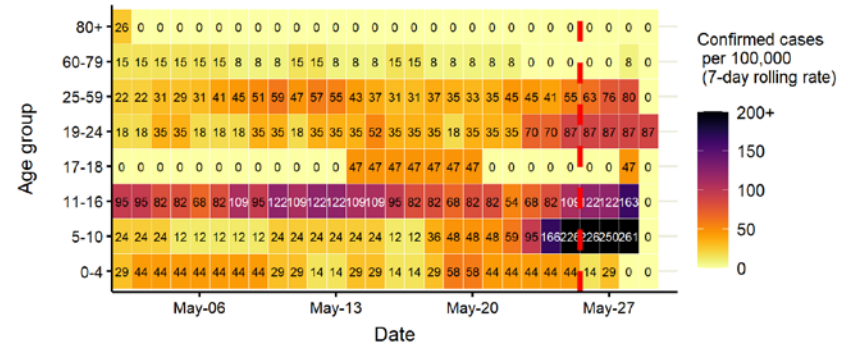
Daily cases from 1/10/2020: 60+ YEARS ONLY **NOTE: different y-axis scale**



4 days with incomplete data
 Pillar 1
 Pillar 2
 Total 7 day moving average (P1 + P2)



Age-stratified case rate heatmap for Watford: 2 May to 29 May 2021

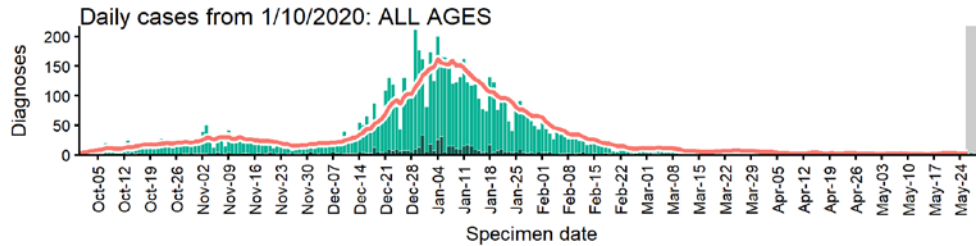


The red dashed line on the heatmaps show the last four days where data may be incomplete due to reporting delays and removal of LFDs with accompanying negative PCR results. Please consider this data provisional.

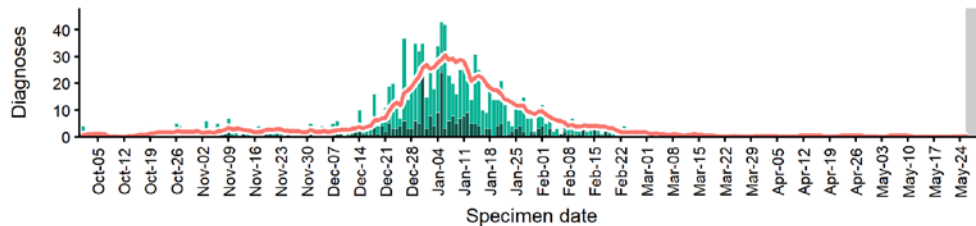
Data from SGSS. Produced by Outbreak Surveillance Team, PHE

Welwyn Hatfield case numbers, testing numbers and positivity, 1 Oct to 29 May 2021

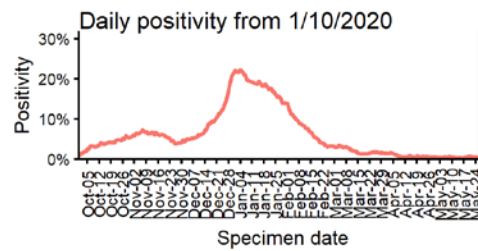
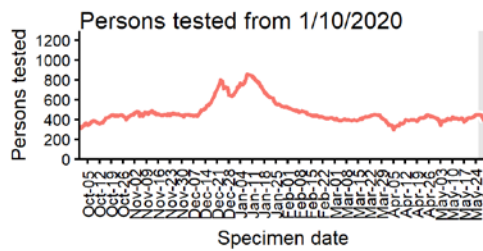
WELWYN HATFIELD Cases and persons tested up to May 29 2021



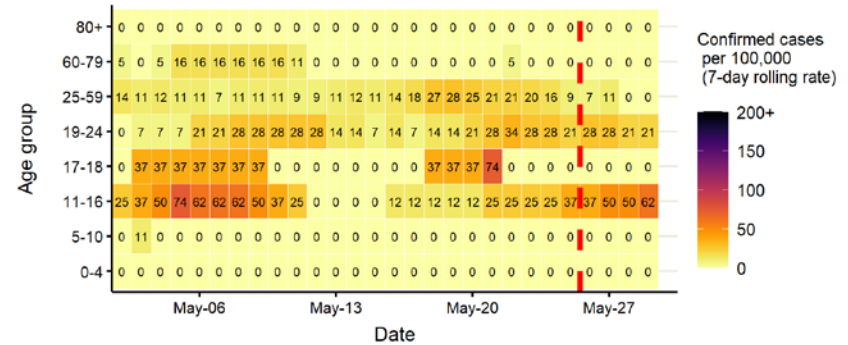
Daily cases from 1/10/2020: 60+ YEARS ONLY **NOTE: different y-axis scale**



4 days with incomplete data
 Pillar 1
 Pillar 2
 Total 7 day moving average (P1 + P2)



Age-stratified case rate heatmap for Welwyn Hatfield: 2 May to 29 May 2021

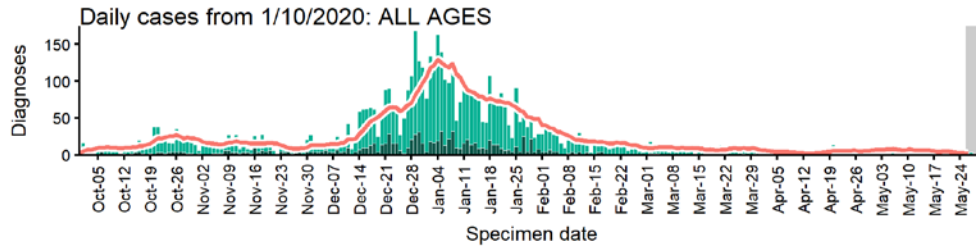


The red dashed line on the heatmaps show the last four days where data may be incomplete due to reporting delays and removal of LFDs with accompanying negative PCR results. Please consider this data provisional.

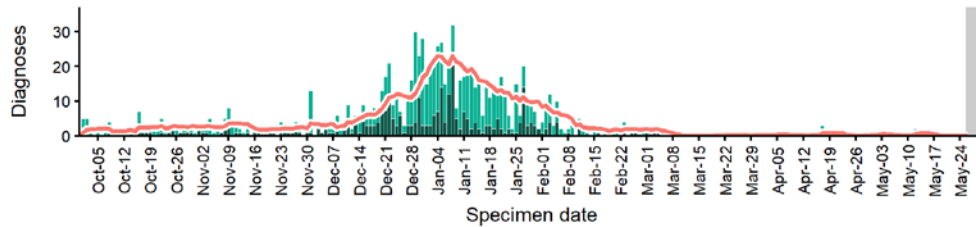
Data from SGSS. Produced by Outbreak Surveillance Team, PHE

West Suffolk case numbers, testing numbers and positivity, 1 Oct to 29 May 2021

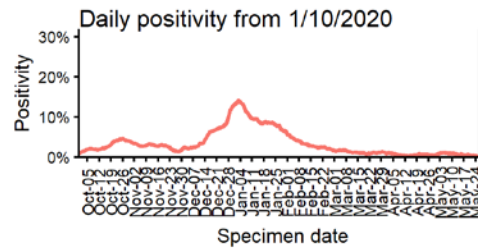
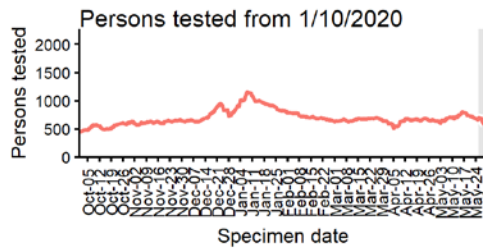
WEST SUFFOLK
Cases and persons tested up to May 29 2021



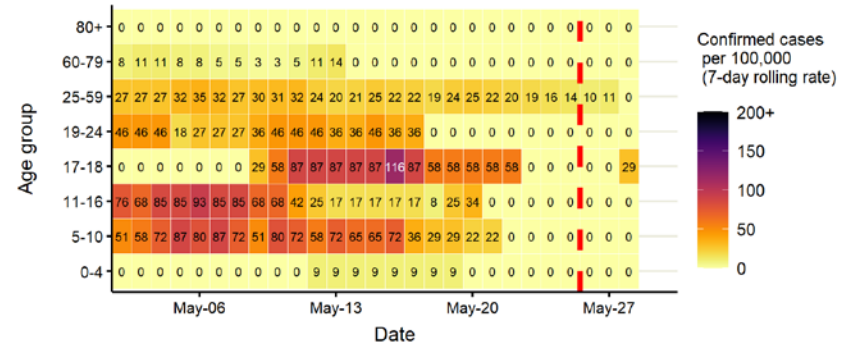
Daily cases from 1/10/2020: 60+ YEARS ONLY **NOTE: different y-axis scale**



4 days with incomplete data Pillar 1 Pillar 2 Total 7 day moving average (P1 + P2)



Age-stratified case rate heatmap for West Suffolk: 2 May to 29 May 2021



The red dashed line on the heatmaps show the last four days where data may be incomplete due to reporting delays and removal of LFDs with accompanying negative PCR results. Please consider this data provisional.

Data from SGSS. Produced by Outbreak Surveillance Team, PHE

© Crown copyright 2020

www.gov.uk/dhsc

This publication is licensed under the terms of the Open Government Licence v3.0 except where otherwise stated. To view this licence, visit nationalarchives.gov.uk/doc/open-government-licence/version/3

Where we have identified any third party copyright information you will need to obtain permission from the copyright holders concerned.

OGL